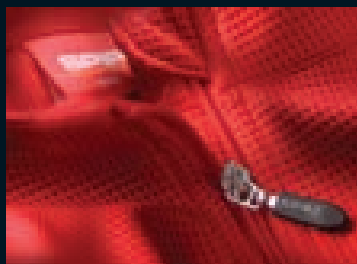
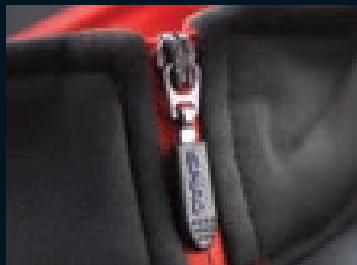


SPIRO



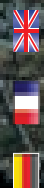
www.spiroactivewear.com

SPIRO ACTIVEWEAR

SPIRO

ACTIVWEAR

2014 COLLECTION



SPIRO

Co-ordinated Sportswear

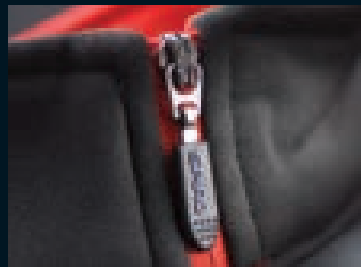


SPIRO 2014

SPIRO Activewear is part of **Result**® Clothing.

SPIRO continues to utilise the latest technical performance fabrics and styles, adding junior sizes to its 2014 range and taking the lead with additions to its BIKEWEAR selection. For the team look, SPIRO garments are designed to fully co-ordinate with an even wider colour palette and increased size range for greater 2014 mix and match.

Connect with us: www.spiroactivewear.com



TEAM SPORT

FITNESS

TRAINING

GYM

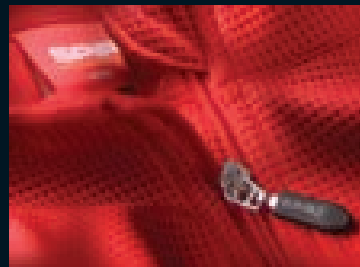
ATHLETICS

RACKET SPORT

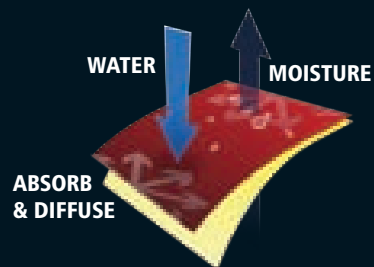
CYCLING

YOGA

HOCKEY



COOL-DRY®
MOISTURE WICKING CONTROL



MOISTURE CONTROL FABRIC

TEMPERATURE CONTROL

EXTREMELY BREATHABLE

SPECIALLY TREATED YARNS

QUICK DRYING

WASH & WEAR (NON IRON)

FREEDOM OF MOVEMENT

PRINTED NECK LABELS

COOL-DRY® is made from greige yarn which has not been bleached, dyed or finished after production and is by nature absorbent to moisture. Its 2-fold function works to wick away from the body any moisture and expel it, ensuring the fabric remains cool and dry around a comfortable body zone.

ABSORBENT MANAGEMENT

COOL-DRY® has a 15-72% higher diffusion ability and 15-45% faster drying effect than cotton.

BREATHABILITY

COOL-DRY® fabric is efficient and breathable. Cotton moisture swells the fabric and blocks breathability.

EASY CARE

Cotton fabric suffers from shrinkage and distortion, COOL-DRY® does not shrink or distort.

COMPANY POLICIES & ENVIRONMENTAL RESPONSIBILITY

SPIRO Activewear is part of **Result**® Clothing.

All styles subject to availability.

CORPORATE RESPONSIBILITY

At SPIRO we see corporate responsibility as key in how we conduct our business and believe it makes good sense to run our business in a responsible way with regards:

Minimum Age Labour. SPIRO does not permit the employ of workers under the minimum age established by local law or below compulsory school-going age, whichever is greater. In no case shall SPIRO permit the employ of individuals under the age of 16.

Working Conditions. SPIRO requires that all authorised garments bearing its name be manufactured under conditions which adhere to strict standards on working hours and good working conditions, including factory temperature. SPIRO requires all suppliers to employ based on equal opportunity and non-racist policies. Developing healthy links with communities in which we operate within the UK and overseas by creating opportunity, skill development and support in emerging economies. **Nickel Detection.** All garments are tested to ensure all trims are nickel-free.

SPIRO Assurance. SPIRO delivers value to our customers with its assurance of excellence but we will gladly repair, replace or refund any garment which has a genuine manufacturing fault. When a garment is accepted back for our free & fast turnaround repair service,

SPIRO asks customers to ensure the garment has been thoroughly cleaned as SPIRO reserves the right not handle any garment which compromises the health and safety of its operatives.

BROCHURE COLOUR REPRODUCTION

SPIRO designers take great care with garment colour in our brochures. Limitations of media print may mean shade variations with images. Pantone references are therefore supplied for guidance.

PRODUCT DESCRIPTION

Every reasonable care has been taken to ensure that the descriptions are accurate. Specifications may change however & SPIRO reserve the right to do so where necessary. All garment styles are protected by copyright owned by RESULT and their reproduction in any form without the express consent of the copyright holder will be actioned as an infringement under copyright law.

PURCHASER RESPONSIBILITY

SPIRO products are designed to be worn and all statements, technical information and recommendations herein are based on tests we believe to be reliable. However the accuracy or completeness thereof is not guaranteed so before use, the user must determine the suitability of the product for its intended use, as the user assumes all risk and liability whatsoever in connection therewith.

ENVIRONMENTAL PRACTICES

Being responsible for our impact on the environment.

Environment: SPIRO demands all suppliers pursue correct environmental practice, including the recycling of waste materials and the re-circulation of waste heat generated in the dyeing process. SPIRO insists on the use of dyed fabric free from harmful substance in all products.

Recycling: As innovations to fabric recycling evolve, SPIRO reserves the right to make running changes to any styles or packaging where recycling can enhance performance or lessen environmental impact. All garments using recycled materials within their makeup are marked in this brochure. Recycled bag and packaging is used, together with any other recycled materials on labelling & promotional literature, where possible.

REACH: SPIRO encourages all suppliers to have full compliance with REACH (Registration, Evaluation, Authorisation and Restriction of Chemicals) and ensure no substances harmful to any human or the environment are used in products bearing the SPIRO brand.

TRADE ASSOCIATIONS

SEDEX: the Supplier of Ethical Data Exchange is a membership organisation for businesses committed to continuous improvement of the ethical performance of their supply chains.

FSC

This brochure has been printed using FSC (Forest Stewardship Council) certified paper.

GARMENT SIZES

Garment sizes indicated are approximate body fit sizes and for guidance only.

Where multi-language translation appears in any SPIRO literature English translation prevails.

These garments are protected by copyright and/or other intellectual property rights.



MENS

S108M MENS NERO JACKET	04
S170M MENS SPRINT BASE TOP	06
S171M MENS SPRINT PANT	08
S172M MENS RACE SYSTEM JACKET	10
S173M MENS AIRSTREAM JACKET	12
S174M MENS SPRINT SHORT	14
S175M MENS TEAM 3-LAYER SOFT-SHELL JACKET	16
S176M MENS TRAINING SHIRT	18
S177M MENS TEAM SPIRIT POLO	20
S179M MENS MICRO-LITE TEAM PANT	24
S182M MENS DASH TRAINING SHIRT	28
S250M MENS BODYFIT BASE LAYER SHORTS	36
S251M MENS BODYFIT BASE LAYER LEGGINGS	38
S253M MENS QUICK DRY PERFORMANCE SHORT SLEEVE T-SHIRT	42
S254M MENS QUICK DRY PERFORMANCE LONG SLEEVE T-SHIRT	44
S256M MENS FREEDOM SOFT SHELL JACKET	NEW 46
S262M MENS AIRFLOW SOFT SHELL GILET	NEW 48

WOMENS

S108F WOMENS NERO JACKET	52
S170F WOMENS SPRINT BASE TOP	54
S171F WOMENS SPRINT PANT	56
S172F WOMENS RACE SYSTEM JACKET	58
S173F WOMENS AIRSTREAM JACKET	60
S174F WOMENS SPRINT SHORT	62
S175F WOMENS TEAM 3-LAYER SOFT-SHELL JACKET	64
S176F WOMENS TRAINING SHIRT	66
S177F WOMENS TEAM SPIRIT POLO	68
S179F WOMENS MICRO-LITE TEAM PANT	70
S182F WOMENS DASH TRAINING SHIRT	72
S250F WOMENS BODYFIT BASE LAYER SHORTS	74
S251F WOMENS BODYFIT BASE LAYER LEGGINGS	76
S253F WOMENS QUICK DRY PERFORMANCE SHORT SLEEVE T-SHIRT	78
S254F WOMENS QUICK DRY PERFORMANCE LONG SLEEVE T-SHIRT	80
S256F WOMENS FREEDOM SOFT SHELL JACKET	NEW 82
S261F WOMENS SKORT	NEW 84
S262F WOMENS AIRFLOW SOFT SHELL GILET	NEW 86

UNISEX

S178X UNISEX TRIAL TRAINING TOP	22
S180X UNISEX MICRO-LITE TEAM JACKET	26
S183X UNISEX MICRO-LITE RUNNING SHORTS	30
S184X UNISEX MICRO-LITE TEAM SHORT	32
S186X UNISEX ATHLETIC VEST	34
S252X UNISEX COMPRESSION BODYFIT LONG SLEEVE BASE LAYER	40

BIKEWEAR

S185X UNISEX CROSSLITE TRAIL & TRACK JACKET	94
S187M MENS PADDED BIKEWEAR SHORTS	98
S187F WOMENS PADDED BIKEWEAR SHORTS	106
S188M MENS BIKEWEAR SHORT SLEEVE PERFORMANCE TOP	90
S188F WOMENS BIKEWEAR SHORT SLEEVE PERFORMANCE TOP	102
S255M MENS BIKEWEAR LONG SLEEVE PERFORMANCE TOP	NEW 92
S255F WOMENS BIKEWEAR LONG SLEEVE PERFORMANCE TOP	NEW 104
S257X UNISEX BIKEWEAR SHORT GLOVE	NEW 108
S258X UNISEX BIKEWEAR LONG GLOVE	NEW 110
S259X UNISEX BIKEWEAR CROSSLITE GILET	NEW 96
S264X UNISEX BIKEWEAR OFF ROAD SHORTS	NEW 100

JUNIOR

S250J JUNIOR BODYFIT BASE LAYER SHORTS	NEW 114
S253J JUNIOR QUICK DRY T-SHIRT	NEW 116
S261J JUNIOR SKORT	NEW 118

SPIRO



MENS

COLLECTION

S108M MENS NERO JACKET	04
S170M MENS SPRINT BASE TOP	06
S171M MENS SPRINT PANT	08
S172M MENS RACE SYSTEM JACKET	10
S173M MENS AIRSTREAM JACKET	12
S174M MENS SPRINT SHORT	14
S175M MENS TEAM 3-LAYER SOFT-SHELL JACKET	16
S176M MENS TRAINING SHIRT	18
S177M MENS TEAM SPIRIT POLO	20
S179M MENS MICRO-LITE TEAM PANT	24
S182M MENS DASH TRAINING SHIRT	28
S250M MENS BODYFIT BASE LAYER SHORTS	36
S251M MENS BODYFIT BASE LAYER LEGGINGS	38
S253M MENS QUICK DRY PERFORMANCE SHORT SLEEVE T-SHIRT	42
S254M MENS QUICK DRY PERFORMANCE LONG SLEEVE T-SHIRT	44

NEW FOR 2014

S255M MENS BIKEWEAR LONG SLEEVE PERFORMANCE TOP	<i>NEW</i> 92
S256M MENS FREEDOM SOFT SHELL JACKET	<i>NEW</i> 46
S257X UNISEX BIKEWEAR SHORT GLOVE	<i>NEW</i> 108
S258X UNISEX BIKEWEAR LONG GLOVE	<i>NEW</i> 110
S259X UNISEX BIKEWEAR CROSSLITE GILET	<i>NEW</i> 96
S262M MENS AIRFLOW SOFT SHELL GILET	<i>NEW</i> 48
S264X UNISEX BIKEWEAR OFF ROAD SHORTS	<i>NEW</i> 100

UNISEX COLLECTION

S178X UNISEX TRIAL TRAINING TOP	22
S180X UNISEX MICRO-LITE TEAM JACKET	26
S183X UNISEX MICRO-LITE RUNNING SHORTS	30
S184X UNISEX MICRO-LITE TEAM SHORT	32
S186X UNISEX ATHLETIC VEST	34
S252X UNISEX COMPRESSION BODYFIT LONG SLEEVE BASE LAYER	40

Scan QR Code to view the complete range



S108M

MENS NERO JACKET

FABRIC:
OUTER: 140g/m² HydraDri 100% Polyester
SHOULDER: 160g/m² HydraDri 100% Polyester
LINING: 100% Polyester sport mesh
HOOD: 100% Polyester

FEATURES

- Fully taped waterproof seams 1600mm
- Waterproof: 8000mm
- Breathable: 3000g
- Windproof
- Lightweight & quick drying
- Detachable waterproof hood
- 2 lined zip closing pockets
- Tear release adjustable cuff
- Adjustable shockcord hem
- Tear release double storm flap
- Womens fit available

Decorators access: Front left chest only
Decoration process: Direct Print or embroidery



Extérieur : Polyester Dobby HydraDri 140g/m² Polyester sport en maille fileté, Capuche : 100% Polyester Dobby composé

CARACTÉRISTIQUES

- Coutures thermocollées parfaitement étanches 1,600mm
- Léger et séchage rapide
- Capuche imperméable amovible
- 2 poches zippées doublées
- Poignets réglables par fermeture velcro
- Ourlet réglable par cordon avec stoppers
- Rabat de protection à fermeture velcro

Points d'accès : Poche poitrine gauche uniquement
Décoration : Impression ou broderie



Aussenseite: 140g/m² HydraDri Polyester Futter: Sportnetz aus 100% Polyester. Kapuze: 100% Polyester Dobby mit zweilagiger wasserdichter Beschichtung

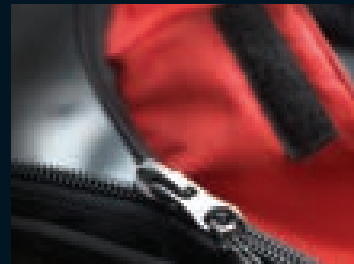
AUSSTATTUNG

- Voll versiegelte wasserdichte Nähte 1,600mm
- Leicht und schnell trocknend
- Abnehmbare wasserdichte Kapuze
- 2 Seitentaschen mit Reißverschluss
- Ärmelaufschläge durch Klett verstellbar
- Kordelzug mit Stoppere im Bund
- Windschutzleiste mit Klettverschluss

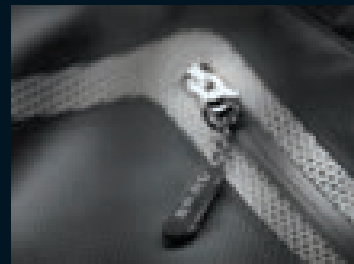
Veredelungszugang: Zugang auf linker Brustseite
Veredelungsmöglichkeiten: Druck oder Stick



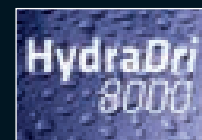
Lightweight



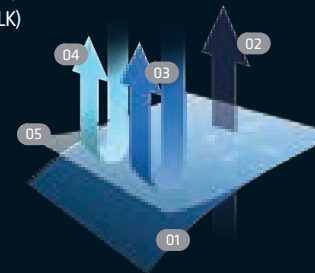
Full front zip fastening with tear release storm flap



Zip closing chest pocket



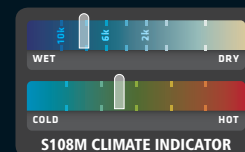
BLACK (BLK)



HydraDri

- 01 Outer Fabric
- 02 Breathable
- 03 Waterproof
- 04 Windproof
- 05 Waterproof coating

Waterproof: 8000mm
 Breathable: 3000g
 Windproof



	S	M	L	XL	2XL	3XL
UK	38	41	44	47	50	53
EURO	48	50	54	56	60	64
CASE:	10			PACK: 5		

MIX & MATCH

CO-ORDINATE YOUR LOOK

1 S108M COLOUR RANGE www.spiroactivewear.com



2 CO-ORDINATING TOPS www.spiroactivewear.com



3 CO-ORDINATING LEGWEAR www.spiroactivewear.com



Scan QR Code to view the complete range



S170M

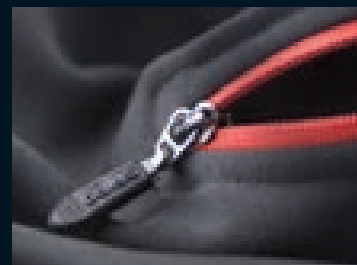
MENS SPRINT BASE TOP

FABRIC:
280g/m² Z-TECH® stretch fabric
95% Polyester 5% Elastane

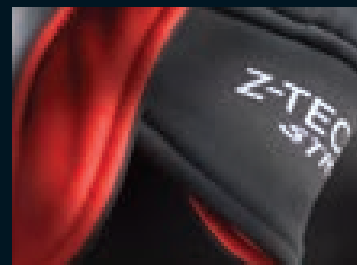
FEATURES

- Performance athletic top with Z-TECH® Stretch
- Soft athletic 4 way stretch fabric
- Quick drying
- Midweight
- Breathable
- ¼ front zip fastening
- Contemporary styled scalloped cuff
- Reflective Z-TECH® Stretch logo on left cuff
- Keeps the skin cool and comfortable
- Ideal layer garment, good warmth factor when worn as a layer
- Womens fit available

Decorators access: One layer
Decoration process: Digital transfer print, screen print transfer or embroidery



¼ front zip fastening



Contemporary styled scalloped cuff



Tissu Stretch Z-TECH® 280g/m² respirant et léger
95% Polyester 5% Élasthane

CARACTÉRISTIQUES

- Veste conçu pour les performances sportives en stretch Z-TECH®
- Tissu doux et stretch extensible 4 directions
- Séchage rapide
- Poids moyen
- Fermeture zippée 1/4 à l'encolure
- Poignets resserrés style moderne
- Logo réfléchissant Z-TECH® Stretch sur le poignet gauche
- Conserve la fraîcheur de la peau et procure un confort maximal
- Vêtement idéal en superposition, bonne protection thermique quand superposé à d'autres vêtements

Points d'accès : Monocouche
Décoration : Transfert numérique et Serigraphie



280g/m² Z-TECH® Stretchmaterial. Atmungsaktiv und leicht
95% Polyester 5% Elastan

AUSSTATTUNG

- Leistungsstarkes Sportoberteil mit Z-TECH® Stretch
- Weiches sporttaugliches Material aus Vier-Wege-Stretch
- Schnellrocknend
- Mittelschwer
- Viertellanger Reißverschluss an der Vorderseite
- Sportlicher Ärmelabschluss
- Reflektierendes Logo von Z-TECH® Stretch auf dem linken Bündchen
- Kühles Hautgefühl beim Tragen und angenehme Passform
- Ideal geeignet zum Tragen in mehreren Schichten, guter Warmhaltefaktor beim Tragen als Zwischenschicht.

Veredelungszugang: Nur 1-lagig
Veredelungsmöglichkeiten: Transferdruck oder Stick, Digital Transferdruck



**Z-TECH
STRETCH**

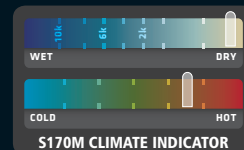
Breathable
Midweight

BLACK/GREY
(BLK/425)



BLACK/RED
(BLK/187)

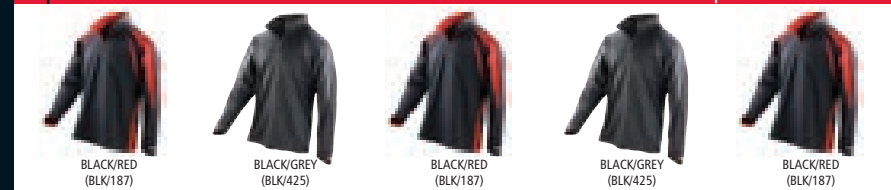
	S	M	L	XL	2XL
UK	38	41	44	47	50
EURO	48	50	54	56	60
CASE:	10				
PACK:	5				



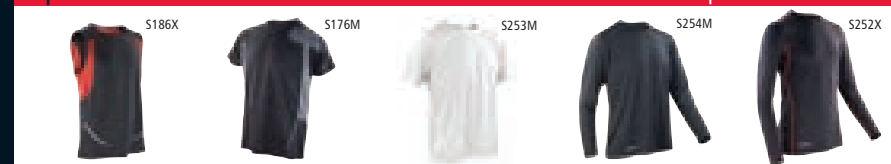
MIX & MATCH

CO-ORDINATE YOUR LOOK

1 S170M COLOUR RANGE www.spiroactivewear.com



2 CO-ORDINATING TOPS www.spiroactivewear.com



3 CO-ORDINATING LEGWEAR www.spiroactivewear.com



Scan QR Code to view the complete range



SPIRO S171M

MENS SPRINT PANT

FABRIC:
248g/m² Z-TECH® stretch 92% Polyester 8% Elastane

FEATURES

- Athletic sport pant with Z-TECH® Stretch
- Soft athletic 4 way stretch fabric
- Extremely lightweight
- Breathable
- Quick drying
- High waisted
- Elasticated waist with soft internal drawcord for comfort fit
- Zip opening to lower legs with grip strip
- Z-Tech stretch logo on left thigh in reflective material
- SPIRO logo in the middle of back section in reflective material
- Keeps the skin cool and comfortable super fit
- Womens fit available

Decorators access: One layer

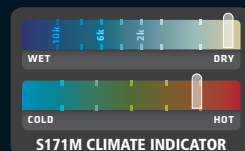
Decoration process: Transfer print or embroidery



Zip closing back pocket



Zip opening to lower legs with grip strip



TISSU

Tissu stretch Z-TECH® 248g/m² 92% Polyester, 8% Élasthanne

CARACTÉRISTIQUES

- Pantalon de sport en stretch Z-TECH®
- Tissu doux et stretch extensible 4 directions
- Très léger
- Séchage rapide
- Taille élastiquée avec cordon de serrage intérieur pour un ajustement parfait
- Bas de jambe zippé avec bande auto-agrippante.
- Logo réfléchissant Z-Tech Stretch sur la cuisse gauche
- Conserve la fraîcheur de la peau et procure un confort maximal

Points d'accès : Monocouche

Décoration : Transfert ou broderie



STOFF

248g/m² Z-TECH® Stretchmaterial. 92% Polyester, 8% Elastan

AUSSTATTUNG

- Athletische Sporthose aus Z-Tech Stretchmaterial
- Weiches sporttaugliches Material aus Vier-Wege-Stretch
- Extrem leicht
- Schnelltrocknend
- Elastischer Bund mit weichem Innenzugband für bequemen Sitz
- Reißverschlüsse im Wadenbereich mit Klettband
- Reflektierendes Logo von Z-TECH® Stretch auf der linken Wade
- Kühles Hautgefühl beim Tragen und angenehme Passform

Veredelungszugang: Nur 1-lagig

Veredelungsmöglichkeiten: Transferdruck oder Stick



Z-TECH
STRETCH



Lightweight

BLACK
(BLK)

GREY
(425)

Breathable
Lightweight

	S	M	L	XL
INCH	32	34	36	38
CM	81	86	91	96
CASE:	10		PACK: 5	

MIX & MATCH

CO-ORDINATE YOUR LOOK

1 CO-ORDINATING JACKETS

www.spiroactivewear.com



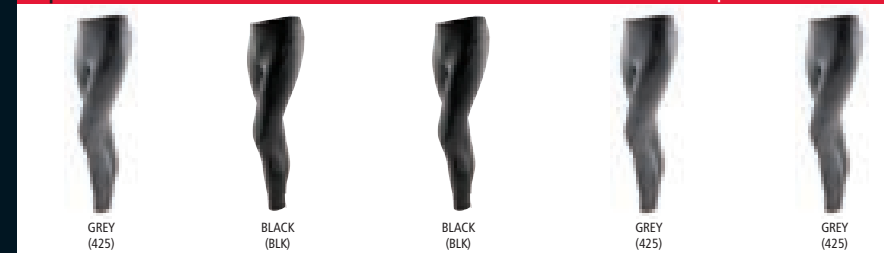
2 CO-ORDINATING TOPS

www.spiroactivewear.com



3 S171M COLOUR RANGE

www.spiroactivewear.com



Scan QR Code to view the complete range



S172M

MENS RACE SYSTEM JACKET

FABRIC:
WATER REPELLENT, BREATHABLE 5000g, WINDPROOF
240gm² 3 LAYER BONDED FABRIC comprising:

- Outer-layer: 100% Polyester HydraDri
- Mid-layer: Waterproof 5000mm, breathable, windproof TPU membrane
- Inner-layer: 100% Polyester tricot
- Contrast Shoulders: 145gm² 100% Polyester brushed tricot

FEATURES

- A dual system high tech sport training jacket
- Detachable zip off sleeve and back collar
- Lightweight & quick drying
- 2 mesh lined zip closing side pockets
- Hidden mesh back pocket
- Stretch comfort fit to cuffs & underarms
- Reflective piping to arms & back panel
- Inner grip strip at base of the jacket
- Womens fit available

Decorators access: Back access only

Decoration process: Digital transfer print or embroidery

Waterproof: 5000mm

Breathable: 5000g

Windproof



Couche extérieure : Tissu 3 couches soudées 100% HydraDri
Couche intérieure : Polaire sport contrecollé 100% Polyester Empiècement
épaule : 100% Polyester avec tricot brossé et revêtement pu imperméable

CARACTÉRISTIQUES

- Manches et arrière du col zippés et détachables
- Ultra légère et séchage rapide
- Poignets et aisselles stretch assurant un confort maximal
- Passepoil décoratif réfléchissant sur les bras et dans le dos
- Bande auto-agrippante intérieure à la base de la veste
- 2 poches latérales zippées doublées en maille filet

Points d'accès : Poitrine gauche et dos
Décoration : Transfert numérique ou broderie

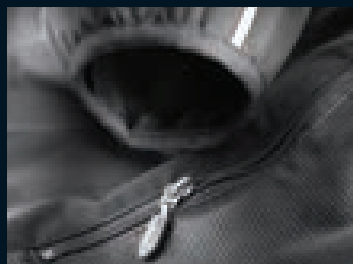
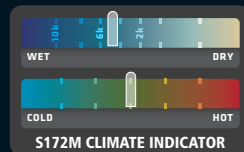


Aussenseite: 100% HydraDri Polyester
Futter: Sportfleece aus 100% Polyester
Kontrastfarbener Schulterbereich: 100% Polyester mit gebürstetem Trikot und wasserdichter PU-Beschichtung

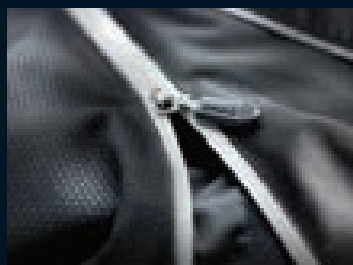
AUSSTATTUNG

- Abnehmbare Ärmel und Kragen mit Reißverschluss
- Leicht und Schnelltrocknend
- Hohe Elastizität an Ärmelbündchen und Unterarmbereich für Komfort und beste Paßform
- Dekorativer, reflektierender Paspelbesatz an Ärmeln und Rückseite
- Elastischer Bund mit Antirutsch-Gummiband innen
- 2 seitliche Reißverschlusstasche mit Netzfutter

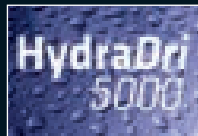
Veredelungszugang: Rückseite
Veredelungsmöglichkeiten: Digital Transferdruck oder Stick



2 mesh lined zip closing side pockets



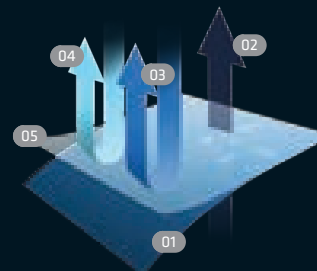
Detachable zip off sleeve and back collar



BLACK (BLK)



Detachable zip off sleeve and back collar



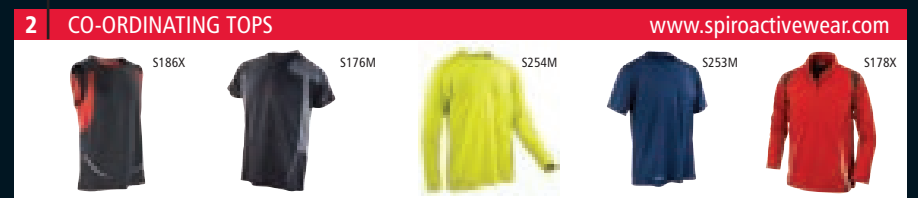
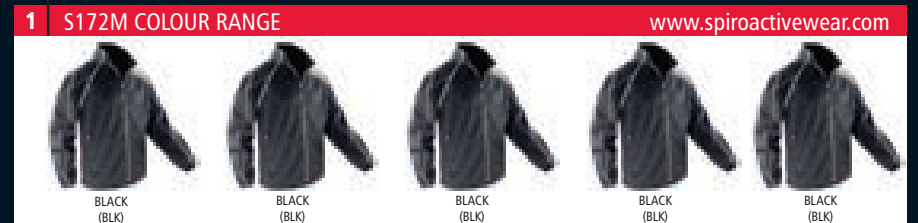
HydraDri

- 01 Outer Fabric
- 02 Breathable
- 03 Waterproof
- 04 Windproof
- 05 Waterproof coating

	S	M	L	XL	2XL
UK	38	41	44	47	50
EURO	48	50	54	56	60
CASE:	10		PACK: 5		

MIX & MATCH

CO-ORDINATE YOUR LOOK



Scan QR Code to view the complete range



S173M

MENS AIRSTREAM JACKET

FABRIC:
OUTER: 100% HydraDri Nylon taslon with dry coating
LINING: 100% Polyester mesh lining
INSET: Ultra reflecting anti UV panels

FEATURES

- Waterproof: 5000mm
- Breathable: 5000g
- Windproof
- Taped seams
- Lightweight comfort fit with maximum protection
- Quick drying
- Reflective materials throughout
- Detachable waterproof hood with shockcord adjusters
- Full front waterproof zip fastening
- 2 mesh lined waterproof zip closing side pockets
- Side ventilation pockets with mesh lining
- Adjustable shockcord hem
- Adjustable tear release cuff adjusters
- Waterproof zip fastening chest pocket
- Zip fastening back pocket
- Womens fit available

Decorators access: Back access only
Decoration process: Embroidery



Extérieur : 100% Nylon Taslon HydraDri Coupe-vent
 Doublure : 100% Polyester sport maille filet
 Incrustation : Panneaux anti UV ultra-réfléchissants

CARACTÉRISTIQUES

- Léger et confortable offrant une protection maximale
- Séchage rapide
- Panneaux incrustés ultra-réfléchissants
- Capuche imperméable amovible avec cordon de serrage avec stoppers
- Fermeture zippée imperméable à l'avant
- 2 poches latérales imperméables zippées doublées en maille filet
- Poches latérales de ventilation avec doublure maille filet
- Ourlet réglable par cordon avec stoppers

Points d'accès : Via le dos uniquement
Décoration : Broderie

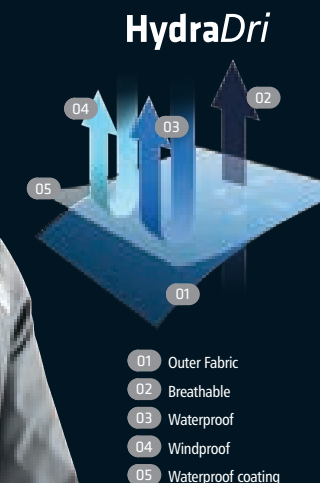
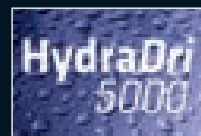


Aussenseite: 100% HydraDri Nylon Taslon
 Futter: 100% Polyester mit Sportnetzfutter
 Einsatz: Extrem reflektierende Einsätze mit Anti-UV Schutz

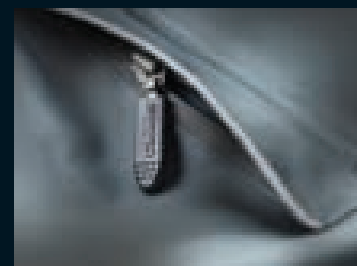
AUSSTATTUNG

- Sehr leichtes Material für hohen Tragekomfort
- Schnelltrocknend
- Extrem reflektierende Einsätze
- Abnehmbare wasserdichte Kapuze mit Kordelstoppem
- Durchgehender, wasserdichter Reißverschluss an der Vorderseite mit Kinnschutz
- 2 seitliche, wasserdichte Reißverschlussaschen mit Netzfutter
- Seitliche Lüftungsschlitze mit Netzfutter und Reißverschluss
- Anpassbarer Kordelzug

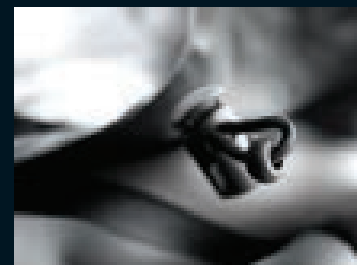
Veredelungszugang: Rückseite
Veredelungsmöglichkeiten: Stick



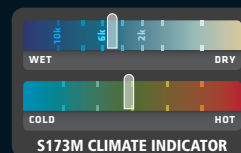
GREY
(425)



2 mesh lined waterproof zip closing side pockets



Adjustable shockcord hem



Waterproof: 5000mm
Breathable: 5000g
Windproof

	S	M	L	XL	2XL	3XL
UK	38	41	44	47	50	53
EURO	48	50	54	56	60	64
CASE:	10		PACK: 5			

MIX & MATCH

CO-ORDINATE YOUR LOOK

1 S173M COLOUR RANGE www.spiroactivewear.com

GREY (425) GREY (425) GREY (425) GREY (425) GREY (425)

2 CO-ORDINATING TOPS www.spiroactivewear.com

S182M S176M S176M S254M S177M

3 CO-ORDINATING LEGWEAR www.spiroactivewear.com

S171M S171M S179M S251M S171M
 S174M S174M S174M S250M S187M

Scan QR Code to view the complete range



S174M

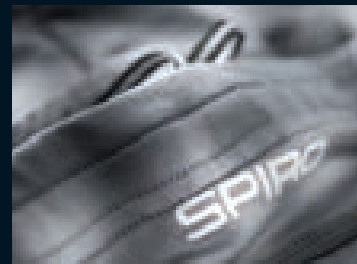
MENS SPRINT TRAINING SHORT

FABRIC:
248g/m² Z-TECH® stretch 92% Polyester 8% Elastane

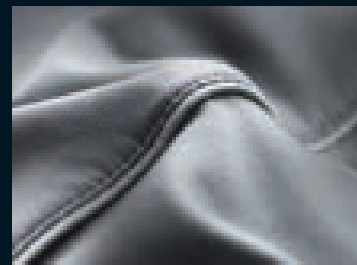
FEATURES

- Athletic sport pant with Z-TECH® Stretch
- Soft athletic 4 way stretch fabric
- Extremely lightweight
- Quick drying
- Breathable
- High waisted
- Dual elastic waistband for comfort fit
- Reflective SPIRO logo center back position
- Z-TECH® Stretch logo on left thigh in reflective material
- Keeps the skin cool and comfortable super fit
- Ideal layer garment, good warmth factor when worn as a layer
- Womens fit available

Decorators access: One layer
Decoration process: Transfer print or embroidery



Dual elastic waistband for comfort fit

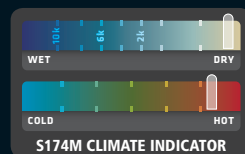


Soft athletic 4 way stretch fabric



Lightweight

Breathable
Lightweight



Tissu stretch Z-TECH® 248g/m² 92% Polyester, 8% Élasthanne

CARACTÉRISTIQUES

- Short de sport en stretch Z-TECH®
- Tissu doux et stretch extensible 4 directions
- Très léger
- Séchage rapide
- Double bande élastique à la taille pour plus de confort
- Logo Spiro réfléchissant situé au centre sur l'arrière du short
- Logo réfléchissant Z-TECH® Stretch sur la cuisse gauche
- Maintient la fraîcheur de la peau et procure un confort maximal
- Vêtement idéal en superposition, bonne protection thermique quand superposé à d'autres vêtements

Points d'accès : Monocouche
Décoration : Transfert ou broderie



248g/m² Z-TECH® Stretchmaterial 92% Polyester 8% Elastan

AUSSTATTUNG

- Athletische Sporthose aus Z-TECH® Stretchmaterial
- Weiches, sportliches Stretchmaterial
- Extrem leicht und schnelltrocknend
- Elastisches Doppelzugband an der Taille für angenehmen Sitz
- Sicherheits-Reflexpaspeln und reflektierender Logoaufdruck vorne links und hinten oben mittig
- Die Haut bleibt kühl und komfortabel
- Tolle Paßform
- Ideal geeignet zum Tragen in mehreren Schichten, guter Warmhaltefaktor beim Tragen als Zwischenschicht

Veredelungszugang: Nur 1-lagig
Veredelungsmöglichkeiten: Transferdruck oder Stick



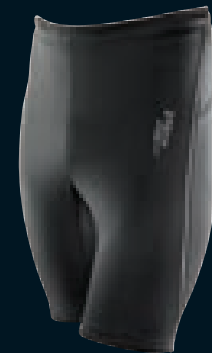
GREY
(426)



Z-TECH
STRETCH



BLACK
(BLK)



	S	M	L	XL
INCH	32	34	36	38
CM	81	86	91	96
CASE:	10		PACK: 5	

MIX & MATCH

CO-ORDINATE YOUR LOOK

1 CO-ORDINATING JACKETS www.spiroactivewear.com



2 CO-ORDINATING TOPS www.spiroactivewear.com



3 S174M COLOUR RANGE www.spiroactivewear.com



Scan QR Code to view the complete range




S175M

MENS TEAM 3-LAYER SOFT SHELL JACKET

FABRIC:
WATER REPELLENT, BREATHABLE 2000g, WINDPROOF
 240gm² 3 LAYER BONDED FABRIC comprising:
 - **Outer-layer:** 100% Polyester pongee 300T
 - **Mid-layer:** Waterproof 5000mm, breathable 2000g & windproof TPU membrane
 - **Inner-layer:** 100% Polyester 190g single jersey

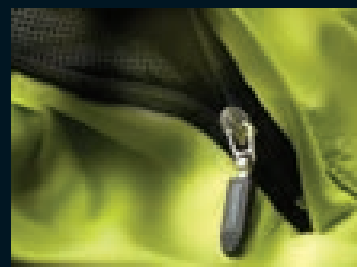
- FEATURES**
- Midweight & quick drying
 - Comfortable active sport fit
 - Wind protect longer back panel
 - Full front zip
 - 2 lined zip closing side pockets
 - 2 side zip closing ventilation pockets
 - Adjustable tear release cuff adjusters
 - Collar adjuster
 - Cable loop
 - Adjustable drawcord hem
 - Reflective SPIRO print logo
 - Reflective print design to front
 - Womens fit available

Decorators access: Left chest zip access
Decoration process: Transfer print or embroidery

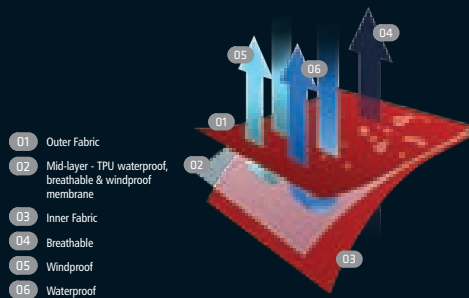
 Tissu : Tissu Softshell 3 couches soudées
 Couche extérieure : 100% Polyester Pongee 300T
 Couche intermédiaire : Membrane TPU imperméable
 Couche intérieure : 100% Polyester Jersey simple 190g

- CARACTÉRISTIQUES**
- Poids moyen et sèche vite
 - Coupe sportive et confortable
 - Technique de coutures plates
 - Panneau plus long dans le dos pour protéger du vent
 - Fermeture zippée à l'avant
 - 2 poches latérales zippées doublées
 - 2 poches latérales de ventilation zippées


Points d'accès : Fermeture zippée au niveau de la poitrine gauche
Décoration : Transfert ou broderie



2 side zip closing ventilation pockets



3 Layer Soft Shell

 Material: dreilagiges Softshell Material
 Innenseite: 100% Polyester Pongé 300T
 Mittelschicht: Wasserdichte TPU-Membran
 Aussenseite: 100% Polyester 190g Single Jersey

- AUSSTATTUNG**
- Mittelschwer und schnelltrocknend
 - Bequeme, aktive Passform
 - Flatlock-Nähte
 - Verlängertes Rückenteil - schützt vor Wind
 - Durchgehender Reißverschluss an der Vorderseite
 - 2 seitliche Reißverschlussstaschen mit Netzflügel
 - Seitliche Lüftungsschlitze mit Reißverschluss

Veredelungszugang: Oberkörper links - Zugang über Reißverschluss
Veredelungsmöglichkeiten: Transferdruck oder Stick



NEON LIME/GREY
(382/425)



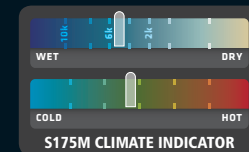
BLACK/GREY
(BLK/425)

BLACK/RED
(BLK/200)

	S	M	L	XL	2XL
UK	38	41	44	47	50
EURO	48	50	54	56	60

CASE: 10


PACK: 5




MIX & MATCH

CO-ORDINATE YOUR LOOK

1 S175M COLOUR RANGE www.spiroactivewear.com



2 CO-ORDINATING TOPS www.spiroactivewear.com



3 CO-ORDINATING LEGWEAR www.spiroactivewear.com



Scan QR Code to view the complete range



S176M

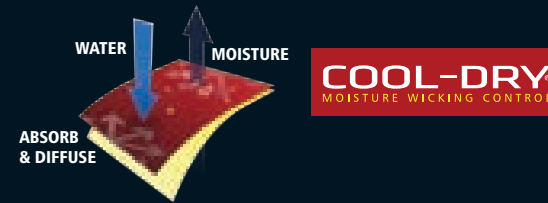
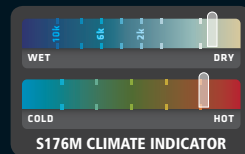
MENS TRAINING SHIRT

FABRIC:
100% waffle knitted Polyester, 145g/m² COOL-DRY® mesh

FEATURES

- Performance lightweight athletic top
- Precision fit body mapping design
- Cover stitch seams
- Soft athletic stretch COOL-DRY® fabric
- Quick drying
- Breathable
- Lightweight
- Keeps the skin cool and comfortable
- Ideal layer garment, good warmth factor when worn as a layer
- Womens fit available

Decorators access: One layer
Decoration process: Transfer print or embroidery



100% Polyester, maille filet nid d'abeille COOL-DRY® 145g/m² respirant, très léger

CARACTÉRISTIQUES

- Maillot de sport léger et performant
- S'ajuste avec précision aux contours du corps
- Coutures couvertes
- Tissu doux et stretch COOL-DRY® conçu pour les performances sportives
- Séchage rapide
- Léger
- Maintient la fraîcheur de la peau et procure un confort maximal
- Vêtement idéal en superposition, bonne protection thermique quand superposé à d'autres vêtements

Points d'accès : Monocouche
Décoration : Transfert ou broderie

100% Waffelstrick-Polyester 145g/m² COOL-DRY® Netzfutter atmungsaktiv, extreme leicht

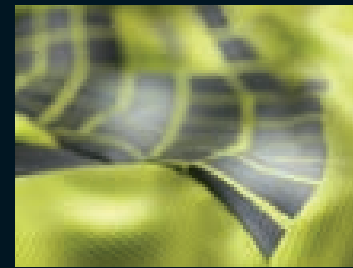
AUSSTATTUNG

- Extreme leichtes, leistungsfähiges Funktionsshirt
- Körperbetonter Schnitt für präzise Passform
- Verschiedene Ziernähte
- Weiches, sportliches COOL-DRY® Material
- Schnelltrocknend
- Leicht
- Die Haut bleibt kühl und komfortabel
- Ideal geeignet zum Tragen in mehreren Schichten, guter Warmhaltefaktor beim Tragen als Zwischenschicht

Veredelungszugang: Nur 1-lagig
Veredelungsmöglichkeiten: Transferrdruck oder Stick



Lightweight



Reflective shoulder detail



NEON LIME/GREY
(382/425)



BLACK/RED
(BLK/200)

BLACK/GREY
(BLK/425)

	S	M	L	XL	2XL
UK	38	40	42	44	46
EURO	48	50	52	54	56
CASE:	20		PACK: 5		

Breathable
Extremely lightweight

MIX & MATCH

CO-ORDINATE YOUR LOOK

1 CO-ORDINATING JACKETS www.spiroactivewear.com



2 S176M COLOUR RANGE www.spiroactivewear.com



3 CO-ORDINATING LEGWEAR www.spiroactivewear.com



Scan QR Code to view the complete range



S177M

MENS TEAM SPIRIT POLO

FABRIC:
100% Polyester, 145g/m² COOL-DRY® waffle knit mesh

FEATURES

- Performance lightweight polo
- Reflective SPIRO print logo on right bottom hem
- Dropped hem
- Soft comfort fit COOL-DRY® fabric
- Soft feel collar
- Quick drying
- Breathable
- Lightweight
- 3 button neck closing
- Keeps the skin cool and comfortable
- Ideal layer garment, good warmth factor when worn as a layer
- Womens fit available

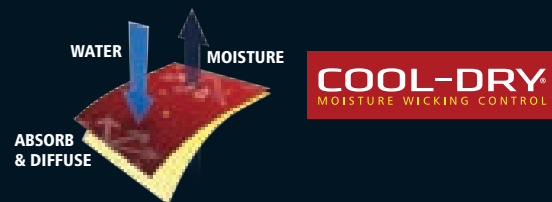
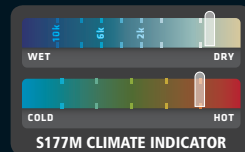
Decorators access: One layer

Decoration process: Transfer print or embroidery



3 button neck closing

Breathable
Extremely lightweight
Quick drying



100% Polyester, maille filet nid d'abeille COOL-DRY® 145g/m²

CARACTÉRISTIQUES

- Polo léger technique
- Tissu doux COOL-DRY®, coupe confortable
- Séchage rapide
- Léger
- Plaque 3 boutons
- Maintient la fraîcheur de la peau et procure un confort maximal
- Vêtement idéal en superposition, bonne protection thermique quand superposé à d'autres vêtements

Points d'accès : Monocouche

Décoration : Impression ou broderie



100% Polyester 145g/m² COOL-DRY-NETZ in Waffeloptik

AUSSTATTUNG

- Sehr leichtes Funktionspolohemd
- Vorderseite mit aufgedrucktem Streifen-Muster und SPIRO Logo unten rechts
- Verlängerter Rücken
- COOL-DRY® Gewebe mit einem angenehmen Tragekomfort
- Schnelltrocknend
- Leicht
- 3er-Knopfleiste
- Die Haut bleibt kühl und komfortabel
- Ideal geeignet zum Tragen in mehreren Schichten, guter Warmhaltefaktor beim Tragen als Zwischenschicht

Veredelungszugang: Nur 1-lagig

Veredelungsmöglichkeiten: Transferdruck oder Stick



NEW SIZES
3XL & 4XL



Lightweight

WHITE/RED
(WHT/1795)



BLACK/RED (BLK/1795) BLACK/WHITE (BLK/WHT) NAVY/WHITE (5395/WHT) RED/WHITE (1795/WHT) ROYAL/NAVY (072/5395) WHITE/NAVY (WHT/5395)

	S	M	L	XL	2XL	3XL	4XL
UK	38	40	42	44	46	48	50
EURO	48	50	52	54	56	58	60

CASE: 20 PACK: 5

MIX & MATCH

CO-ORDINATE YOUR LOOK



Scan QR Code to view the complete range



S178X

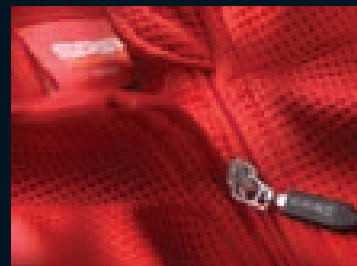
UNISEX TRIAL TRAINING TOP

FABRIC:
185g/m² 100% COOL-DRY® dense waffle knit Polyester

FEATURES

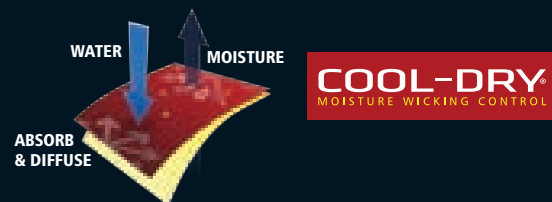
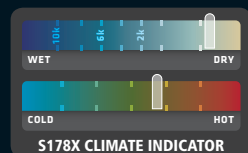
- Performance training top
- Breathable
- Soft comfort fit COOL-DRY® fabric
- Quick drying
- Breathable
- Lightweight
- ¼ neck zip closing
- Keeps the skin cool and comfortable
- Ideal layer garment
- Good warmth factor when worn as a layer
- Unisex fit

Decorators access: One layer
Decoration process: Transfer print or embroidery



¼ neck zip closing

Breathable
Extremely lightweight
Quick dry system



Lightweight



RED/BLACK/WHITE
(1795/BLK/WHT)



BLACK/GREY/WHITE (BLK/431/WHT) GREY/LIME/WHITE (431/382/WHT) NAVY/ROYAL/WHITE (5395/072/WHT) ROYAL/NAVY/WHITE (072/5395/WHT) WHITE/RED/WHITE (WHT/1795/WHT)

	XS	S	M	L	XL	2XL	3XL
UK	36	38	40	42	44	46	50
EURO	46	48	50	52	54	56	60

CASE: 10 PACK: 5



100% Polyester maille nid d'abeille dense 185g/m²

CARACTÉRISTIQUES

- Maillot d'entraînement performant
- Respirant
- Léger
- Séchage rapide
- Tissu doux COOL-DRY®, coupe confortable
- Fermeture zippée ¼ à l'encolure
- Maintient la fraîcheur de la peau et procure un confort maximal
- Vêtement idéal en superposition
- Bonne protection thermique quand superposé à d'autres vêtements

Points d'accès : Monocouche
Décoration : Impression ou broderie



100% 185g/m² COOL-DRY® dichtgewebtes Polyester in Waffloptik

AUSSTATTUNG

- Extreme leichtes, leistungsfähiges Langarm-Funktionsshirt
- Atmungsaktiv
- COOL-DRY® Gewebe mit angenehmen Tragekomfort
- Schnelltrocknend
- Leicht
- ¼ Reißverschluss
- Die Haut bleibt kühl und komfortabel
- Ideal geeignet zum Tragen in mehreren Schichten, guter Warmhaltefaktor beim Tragen als Zwischenschicht

Veredelungszugang: Nur 1-lagig
Veredelungsmöglichkeiten: Transferdruck oder Stick

MIX & MATCH

CO-ORDINATE YOUR LOOK



Scan QR Code to view the complete range



SPIRO

S179M

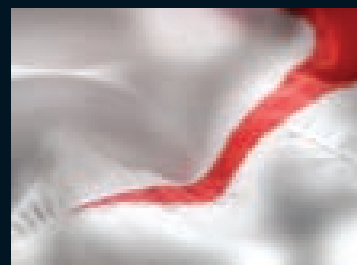
MENS MICRO-LITE TEAM PANT

FABRIC:
50D microfiber-microlite 100% Polyester

FEATURES

- Anatomically designed lightweight sport pant
- Breathable
- Quick drying
- Keeps skin cool & comfortable
- Ventilation panels in sweat zones
- Mesh lined
- 2 zip closing side pockets
- Zip opening lower leg
- Comfortable active sport fit to enhance performance
- Drawcord waist with elastic waistband for comfort fit
- Concealed key pocket
- Reflecting SPIRO Print logo
- Reflective rear detail
- Womens fit available

Decorators access: One layer
Decoration process: Transfer print or embroidery

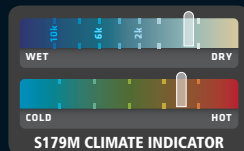


Contrasting detail



Hi-grip SPIRO zip puller

**NEW SIZES
3XL & 4XL**



Lightweight



WHITE/RED
(WHT/1795)



BLACK/RED (BLK/1795) GREY/AQUA (431/3125) NAVY/WHITE (5395/WHT) GREY/LIME (431/382) WHITE/NAVY (WHT/5395)

	S	M	L	XL	2XL	3XL	4XL
INCH	32	34	36	38	40	42	44
CM	81	86	91	96	101	106	111
CASE:	10						
PACK:	5						

Breathable
Extremely lightweight

MIX & MATCH

CO-ORDINATE YOUR LOOK

1 CO-ORDINATING JACKETS www.spiroactivewear.com



2 CO-ORDINATING TOPS www.spiroactivewear.com



3 S179M COLOUR RANGE www.spiroactivewear.com



BLACK/RED (BLK/1795) GREY/AQUA (431/3125) NAVY/WHITE (5395/WHT) GREY/LIME (431/382) WHITE/NAVY (WHT/5395) WHITE/RED (WHT/1795)



Microfibre 50D 100% Polyester

CARACTÉRISTIQUES

- Très Léger
- Séchage rapide
- Maintient la fraîcheur de la peau et procure un confort maximal
- Panneaux de ventilation dans les zones de transpiration
- Coupe sportive et confortable pour une meilleure performance
- Taille élastiquée avec cordon de serrage pour un maximum de confort
- Poche pour clé cachée
- Logo SPIRO imprimé ultra-réfléchissant

Points d'accès : Monocouche
Décoration : Impression ou broderie



50D Microfaser 100% Polyester

AUSSTATTUNG

- Extrem leicht
- Schnelltrocknend
- Die Haut bleibt kühl und komfortabel
- Diverse Belüftungspaneale
- Netzinnenfutter
- Bequeme, sportliche Passform zur Verbesserung der Leistung
- Elastischer Bund mit Kordelzug für eine angenehme Passform
- Verdeckte Schlüsseltasche
- Ultrareflektierendes SPIRO- Logo auf linker Hüfte

Veredelungszugang: Nur 1-lagig
Veredelungsmöglichkeiten: Transferdruck oder Stick

Scan QR Code to view the complete range



SPIRO

S180X

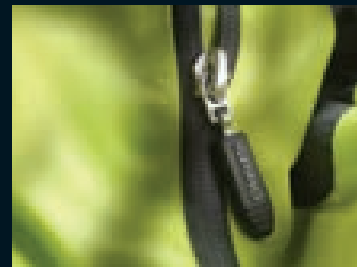
UNISEX MICRO-LITE TEAM JACKET

FABRIC:
50D microfiber-microlite 100% Polyester

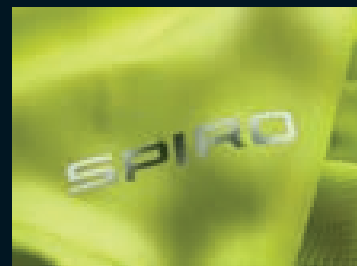
FEATURES

- Anatomically designed lightweight performance sport jacket
- Wind resistant
- Breathable
- Lightweight
- Mesh lined
- Tear release cuff
- Shockcord adjusted
- Hangtag
- Reflective piping
- Quick drying
- Keeps skin cool & comfortable
- Full front SPIRO zip fastening
- Two side pockets
- Reflecting SPIRO print logo
- Unisex fit

Decorators access: Open back hem
Decoration process: Transfer print or embroidery



Full front SPIRO zip fastening

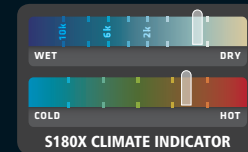


Reflecting SPIRO print logo

NEW SIZES
3XL & 4XL



Wind resistant
Breathable
Extremely lightweight



Lightweight

LIME/GREY
(382/431)



AQUA/GREY (3125/431) BLACK/RED (BLK/1795) NAVY/WHITE (5395/WHT) WHITE/NAVY (WHT/5395) WHITE/RED (WHT/1795)

	XS	S	M	L	XL	2XL	3XL	4XL
UK	34	38	41	44	47	50	53	56
EURO	44	48	50	54	56	60	64	66

CASE: 10 PACK: 5

MIX & MATCH

CO-ORDINATE YOUR LOOK

1 S180X COLOUR RANGE www.spiroactivewear.com



2 CO-ORDINATING TOPS www.spiroactivewear.com



3 CO-ORDINATING LEGWEAR www.spiroactivewear.com



Microfibre 50D, 100% Polyester

CARACTÉRISTIQUES

- Passepoil réfléchissant
- Technologie avancée
- Très légère
- Séchage rapide
- Maintient la fraîcheur de la peau et procure un confort maximal
- Fermeture zippée SPIRO à l'avant
- Deux poches latérales
- Logo SPIRO imprimé ultra-réfléchissant

Points d'accès : Poitrine gauche
Décoration : Transfert ou broderie



50D Microfaser 100% Polyester

AUSSTATTUNG

- Reflektierender Paspelbesatz
- Anspruchsvolle Technologie
- Sehr leicht
- Schnelltrocknend
- Die Haut bleibt kühl und komfortabel
- Durchgehender Reißverschluss von SPIRO an der Vorderseite
- Zwei Seitentaschen
- Ultrareflektierendes Logo auf rechter Brustseite

Veredelungszugang: Brustbereich links
Veredelungsmöglichkeiten: Transferdruck oder Stick

Scan QR Code to view the complete range



SPIRO S182M

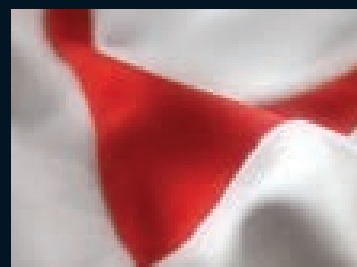
MENS DASH TRAINING SHIRT

FABRIC:
100% Polyester, with 140g/m² jacquard mesh, COOL-DRY® performance fabric

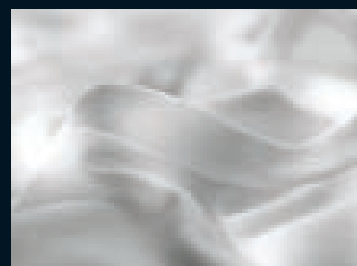
FEATURES

- COOL-DRY® performance fabric with moisture wicking control keeps skin cool & comfortable
- Breathable
- Extremely lightweight
- Contour fit panels
- Quick drying
- Reflecting SPIRO print logo
- Ideal layer garment
- Womens fit available

Decorators access: One layer
Decoration process: Transfer print or embroidery



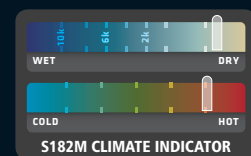
Contrasting detail



COOL-DRY® performance fabric with moisture wicking control

**NEW SIZES
3XL & 4XL**

Breathable
Lightweight



AQUA/GREY
(3125/431)

NAVY/WHITE
(5395/WHT)



WHITE/RED
(WHT/1795)



Lightweight



ABSORB & DIFFUSE

	S	M	L	XL	2XL	3XL	4XL
UK	38	40	42	44	46	48	50
EURO	48	50	52	54	56	58	60
CASE:	20		PACK: 5				

MIX & MATCH

CO-ORDINATE YOUR LOOK

1 CO-ORDINATING JACKETS www.spiroactivewear.com



2 S182M COLOUR RANGE www.spiroactivewear.com



3 CO-ORDINATING LEGWEAR www.spiroactivewear.com



100% Polyester en maille filet Jacquard 140g/m², tissu performant COOL-DRY®

CARACTÉRISTIQUES

- Tissu technique COOL-DRY® qui régule l'humidité de manière optimale et tient la peau au frais pour plus de confort
- Léger
- Empiècements galbés avec passepoil réfléchissant
- Technologie avancée
- Séchage rapide
- Logo SPIRO imprimé ultra-réfléchissant
- Vêtement idéal en superposition

Points d'accès : Monocouche
Décoration : Transfert ou broderie

100% Polyester COOL-DRY® Gewebe. 140g/m² Jacquardnetz

AUSSTATTUNG

- COOL-DRY® Leistungsgewebe. Feuchtigkeitsregulierend, hält kühl
- Leicht
- Körperbetonende Einsätze mit reflektierendem Paspelbesatz
- Anspruchsvolle Technologie
- Schnelltrocknend
- Ultrareflektierendes SPIRO-Logo auf rechter Brustseite
- Ideal als Sportbekleidung -kann als Mittelschicht getragen werden

Veredelungszugang: Nur 1-lagig
Veredelungsmöglichkeiten: Transferdruck oder Stick

Scan QR Code to view the complete range



SPIRO S183X

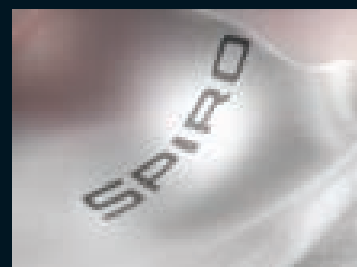
UNISEX MICRO-LITE RUNNING SHORTS

FABRIC:
50D micro fibre, 100% Polyester

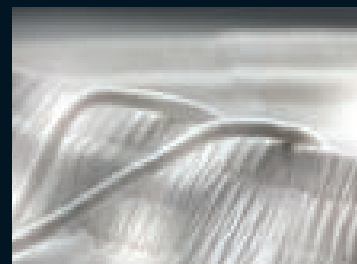
FEATURES

- Performance running shorts
- Inner mesh pant
- Breathable
- Extremely lightweight
- Quick drying
- Keeps skin cool & comfortable through breathable ventilation panels
- Comfortable active sport fit to enhance performance
- Drawcord waist with elastic waistband for comfort fit
- Reflecting SPIRO print logo
- Unisex fit

Decorators access: One layer
Decoration process: Transfer print or embroidery



Reflecting SPIRO print logo



Drawcord waist with elastic waistband for comfort fit



Microfibre 50D 100% Polyester

CARACTÉRISTIQUES

- Short de course technique
- Doublure en maille filet
- Très Léger
- Séchage rapide
- Maintient la fraîcheur de la peau et procure un confort maximal grâce aux empèchements ventilés
- Coupe sportive et confortable pour une meilleure performance
- Taille élastiquée avec cordon de serrage pour un maximum de confort
- Logo SPIRO imprimé ultra-réfléchissant

Points d'accès : Monocouche
Décoration : Transfert ou broderie



50D Mikrofaser Polyester, 100% Polyester

AUSSTATTUNG

- Leistungsstarke Laufshorts
- Netzhinnenhose
- Extrem leicht
- Schnelltrocknend
- Die Haut bleibt kühl und komfortable durch diverse Belüftungspaneel
- Bequeme, sportliche Passform zur Verbesserung der Leistung
- Elastisches Zugband an der Taille für angenehmen Sitz
- Ultrareflektierendes SPIRO - logo auf linker Oberschenkel

Veredelungszugang: Nur 1-lagig
Veredelungsmöglichkeiten: Transferdruck oder Stick



Lightweight

WHITE/RED
(WHT/1795)

Breathable
Extremely lightweight



GREY/AQUA
(431/3125)

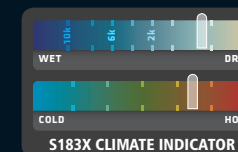
RED/BLACK
(1795/BLK)

NAVY/WHITE
(5395/WHT)

GREY/LIME
(431/382)

BLACK/GREY
(BLK/431)

	2XS	XS	S	M	L	XL	2XL
INCH	28	30	32	34	36	38	40
CM	71	76	81	86	91	97	102
CASE:	20		PACK: 5				



MIX & MATCH

CO-ORDINATE YOUR LOOK



Scan QR Code to view the complete range



SPIRO

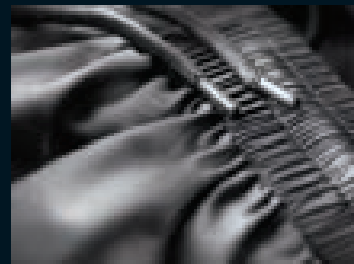
S184X

UNISEX MICRO-LITE TEAM SHORT

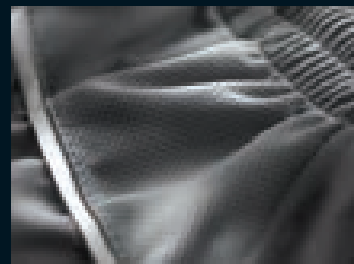
FABRIC:
50D micro fibre 100% Polyester

- FEATURES**
- Performance sport short
 - Inner mesh pant
 - Breathable
 - Extremely lightweight
 - Quick drying
 - Keeps skin cool & comfortable through breathable ventilation panels
 - Comfortable active sport fit to enhance performance
 - Drawcord waist with elastic waistband for comfort fit
 - Concealed key pocket
 - Reflecting SPIRO print logo
 - Unisex fit

Decorators access: One layer
Decoration process: Transfer print or embroidery



Drawcord waist with elastic waistband for comfort fit



Keeps skin cool & comfortable through breathable ventilation panels



Microfibre-microlite 50D 100% Polyester

CARACTÉRISTIQUES

- Short de sport technique
- Doublure en maille filet
- Très Léger
- Séchage rapide
- Maintient la fraîcheur de la peau et procure un confort maximal grâce aux empiecements ventilés
- Coupe sportive et confortable pour une meilleure performance
- Taille élastiquée avec cordon de serrage pour un maximum de confort
- Poche pour clé cachée
- Logo SPIRO imprimé ultra-réfléchissant

Points d'accès : Monocouche
Garnitures : Impression par transfert, broderie



50D Mikrofaser Polyester

AUSSTATTUNG

- Leistungsstarke Laufshorts
- Netzhosenhose
- Extrem leicht
- Schnellrockend
- Die Haut bleibt kühl und komfortable durch diverse Belüftungspaneale
- Bequeme, sportliche Passform zur Verbesserung der Leistung
- Elastisches Zugband an der Taille für angenehmen Sitz
- Verdeckte Schlüssel tasche
- Ultrareflektierendes SPIRO - logo auf linker Oberschenkel

Veredelungszugang: Nur 1-lagig
Veredelungsmöglichkeiten: Transferdruck oder Stick



GREY/LIME
(431/382)

Breathable
Extremely lightweight



GREY/AQUA
(431/3125)



BLACK/RED
(BLK/1795)



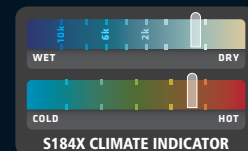
NAVY/WHITE
(5395/WHT)



WHITE/RED
(WHT/1795)



BLACK/GREY
(BLK/431)

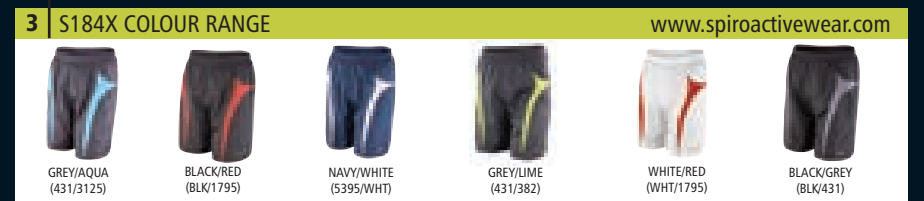
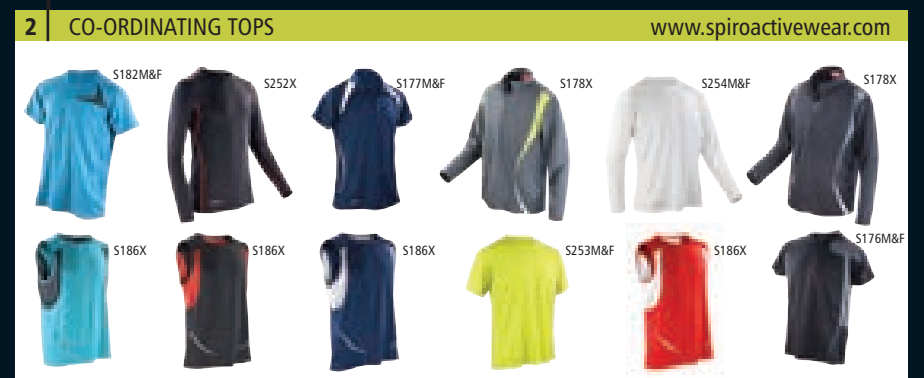


Lightweight

	2XS	XS	S	M	L	XL	2XL
INCH	28	30	32	34	36	38	40
CM	71	76	81	86	91	97	102
CASE:	20		PACK: 5				

MIX & MATCH

CO-ORDINATE YOUR LOOK



Scan QR Code to view the complete range



S186X

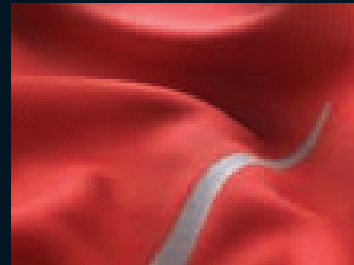
UNISEX ATHLETIC VEST

FABRIC:
140g/m² waffle knit 100% Polyester COOL-DRY® fabric

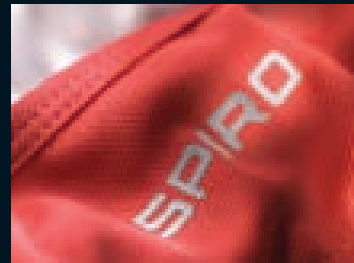
FEATURES

- Breathable
- Extremely lightweight
- Quick drying
- Fast wicking moisture transfer COOL-DRY® keeps skin cool and comfortable
- Reflecting SPIRO print logo
- Unisex fit

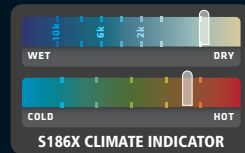
Decorators access: One layer
Decoration process: Transfer print or embroidery



COOL-DRY® keeps fabric breathable to optimise performance for active sport



Reflecting SPIRO print logo



100% Polyester maille nid d'abeille COOL-DRY® 140g/m²

CARACTÉRISTIQUES

- Débardeur de sport léger et technique
- Très Léger
- Séchage rapide
- Élimination rapide de l'humidité avec COOL-DRY® pour assurer fraîcheur et confort de la peau
- COOL-DRY® conserve les propriétés respirantes du tissu afin d'optimiser les performances pendant les activités sportives intenses
- Logo SPIRO imprimé ultra-réfléchissant

Points d'accès: Monocouche
Décoration: Transfert ou broderie

100% 140g/m² Waffelstrick-Polyester COOL-DRY®

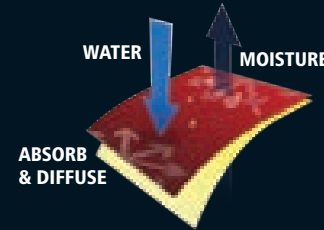
AUSSTATTUNG

- Ärmellose Funktions-T-Shirt
- Extrem leicht
- Schnelltrocknend
- COOL-DRY® Leistungsgewebe. Feuchtigkeitsregulierend, hält kühl
- Atmungsaktive COOL-DRY® Gewebe für eine bessere Leistung
- Ultrareflektierendes SPIRO - logo vorne rechts

Veredelungszugang: Nur 1-lagig
Veredelungszugang: Stick und Transferdruck



COOL-DRY®
MOISTURE WICKING CONTROL



RED/WHITE
(1795/WHT)



Lightweight



AQUA/GREY
(3125/431)



BLACK/RED
(BLK/1795)



NAVY/WHITE
(5395/WHT)



GREY/LIME
(431/382)

	S	M	L	XL	2XL
UK	38	40	42	44	46
EURO	48	50	52	54	56

CASE: 20 **PACK:** 5

Breathable
Extremely lightweight

MIX & MATCH

CO-ORDINATE YOUR LOOK

1 CO-ORDINATING JACKETS www.spiroactivewear.com



2 S186X COLOUR RANGE www.spiroactivewear.com



3 CO-ORDINATING LEGWEAR www.spiroactivewear.com



Scan QR Code to view the complete range



S250M

MENS BODYFIT BASE LAYER SHORTS

FABRIC:

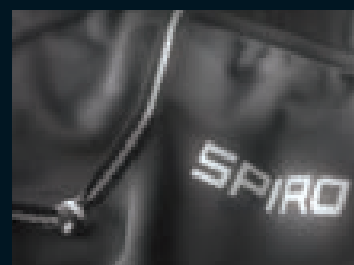
200g/m² 80% Polyamide (Nylon) 20% Elastane

FEATURES

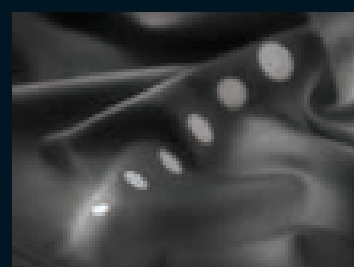
- Quick dry treatment performance fabric with added fast wicking control keeps skin cool & comfortable
- Breathable
- Extremely lightweight
- Flat lock stitch side seams
- Elasticated waist band and drawcord
- Contour panels with contrast stitch
- Micro stretch soft athletic fabric
- Reflective SPIRO print logo
- Inner key pocket
- Ideal layer garment
- Womens fit available

Decorators access: One layer

Decoration process: Transfer print or embroidery



Elasticated waist band and drawcord



Reflective back leg detail

80% Polyamide (Nylon), 20% Élasthanne, 200g/m²

CARACTÉRISTIQUES

- Tissu avec traitement de séchage rapide Quick Dry
- Élimination rapide de l'humidité pour assurer fraîcheur et confort de la peau
- Léger
- Coupe confortable
- Coutures plates latérales
- Ceinture élastiquée avec cordon de serrage
- Empiècements galbés avec coutures contrastées le long des jambes
- Tissu extensible Micro Soft
- Tissu permettant une évacuation rapide de l'humidité du corps
- Logo imprimé SPIRO ultra-réfléchissant sur la cuisse gauche avec 6 points sur le bas arrière de la jambe droite
- Petite poche centrale intérieure arrière
- Vêtement idéal en superposition

Points d'accès : Monocouche
Décoration : Transfert, Broderie80% Polyamid (Nylon), 20% Elastan, 200g/m²

AUSSTATTUNG

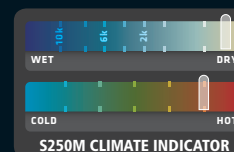
- Schnelltrocknend und feuchtigkeitsregulierend, hält kühl, bequem
- Flatlocknähte an den Seiten
- Elastischer Bund mit Kordelzug
- Sehr leicht
- Körperbetonende Einsätze mit Kontrastnaht am Bein
- Extrem weiches, sportliches Gewebe
- Reflektierendes, gedrucktes SPIRO- Logo auf linkem Oberschenkel mit 6 Punkten auf der Beinrückseite rechts
- Schlüsselinnentasche hinten

Veredelungszugang: n.v.
Veredelungsmöglichkeiten: Transferdruck, StickBLACK
(BLK)Breathable
Extremely lightweight
Comfort fit

	XS/S	M/L	XL/2XL
INCH	30/32	34/36	38/40
CM	76/81	86/91	96/101
CASE	20		PACK: 5



Lightweight



MIX & MATCH

CO-ORDINATE YOUR LOOK

1 CO-ORDINATING JACKETS

www.spiroactivewear.com



S185X



S108M



S172M



S175M



S180X

2 CO-ORDINATING TOPS

www.spiroactivewear.com



S253M



S252X



S253M



S252X



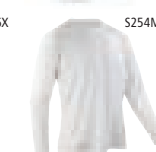
S253M



S254M



S186X



S254M



S254M



S186X

3 S250M COLOUR RANGE

www.spiroactivewear.com

BLACK
(BLK)BLACK
(BLK)BLACK
(BLK)BLACK
(BLK)BLACK
(BLK)

Scan QR Code to view the complete range



SPIRO BASE

S251M

MENS BODYFIT BASE LAYER LEGGINGS

FABRIC:

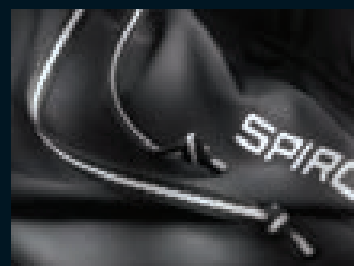
200g/m² 80% Polyamide (Nylon) 20% Elastane

FEATURES

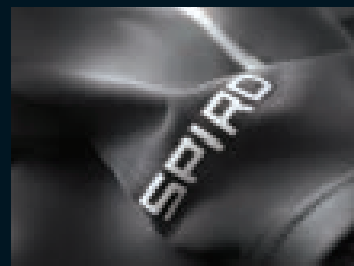
- Athletic soft stretch fabric
- Quick dry treatment performance fabric with fast moisture wicking control keeps skin cool & comfortable
- Breathable
- Extremely lightweight
- Flat lock stitch side seams
- Elasticated waist band and drawcord
- Contour panels with contrast stitching
- Micro stretch soft athletic fabric
- Reflective SPIRO print logo
- Inner key pocket
- Ideal layer garment
- Womens fit available

Decorators access: One layer

Decoration process: Transfer print or embroidery



Elasticated waist band and drawcord



Reflective SPIRO print logo



80% Polyamide (Nylon), 20% Élasthanne, 200g/m²

CARACTÉRISTIQUES

- Tissu avec traitement de séchage rapide Quick Dry
- Élimination rapide de l'humidité pour assurer fraîcheur et confort de la peau
- Coupe confortable
- Coutures plates latérales contrastées
- Ceinture élastiquée avec cordon de serrage
- Empiècements galbés avec coutures contrastées
- Technologie avancée
- Tissu extensible Micro Soft
- Tissu permettant une évacuation rapide de l'humidité du corps
- Logo imprimé SPIRO ultra-réfléchissant sur la cuisse gauche et sur l'arrière de la cheville droite
- Petite poche centrale intérieure arrière
- Vêtement idéal en superposition

Points d'accès : Monocouche
Décoration : Transfert, Broderie



80% Polyamid (Nylon), 20% Elastan, 200g/m²

AUSSTATTUNG

- Schnellrocknend und feuchtigkeitsregulierend, hält kühl
- Flatlocknähte Seitennähte
- Elastischer Bund mit Kordelzug
- Sehr leicht
- Körperbetonte Einsätze mit Kontrastnaht
- Hochentwickelte Technologie
- Extrem weiches, sportliches Gewebe
- Reflektierendes, gedrucktes SPIRO- Logo auf linkem Oberschenkel und rechter Wade unten
- Schlüsselinnentasche hinten

Veredelungszugang: n.v.
Veredelungsmöglichkeiten: Transferdruck, Stick

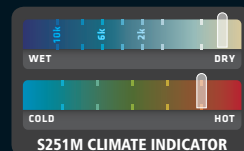
Breathable
Extremely lightweight
Comfort fit



BLACK
(BLK)



Lightweight



	XS/S	M/L	XL/2XL
INCH	30/32	34/36	38/40
CM	76/81	86/91	96/101
CASE:	20		PACK: 5

MIX & MATCH

CO-ORDINATE YOUR LOOK

1 CO-ORDINATING JACKETS www.spiroactivewear.com



2 CO-ORDINATING TOPS www.spiroactivewear.com



3 S251M COLOUR RANGE www.spiroactivewear.com



Scan QR Code to view the complete range



S252X

UNISEX COMPRESSION BODYFIT LONG SLEEVE BASE LAYER

FABRIC:

COOL-DRY® yarn, 80% Polyamide (Nylon) 20% Elastane
main body - 200g/m², mesh panel - 170g/m²

FEATURES

- COOL-DRY® performance fabric fast moisture wicking control keeps skin cool & comfortable
- Breathable contour fit panels
- Lightweight
- Quick drying
- Mesh side panels for extra ventilation
- Anti slide elbow grips
- Flat lock seam stitching in contrast colour
- Designed to be worn next to skin for oscillation muscle support
- Four way stretch for enhanced movement
- Body hugging contour fit
- Cover stitch seam to prevent skin chafe
- Contour fit to support muscles and reduce bulk
- Reflecting SPIRO print logo lower right side
- Printed inner neck label
- Unisex fit

Decorators access: Single layer

Decoration process: Transfer print or embroidery



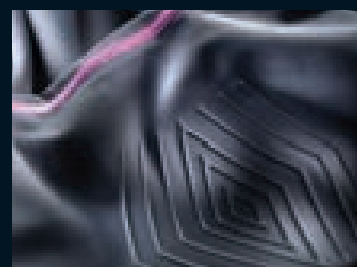
Fil COOL-DRY®, Corps- 200g/m², Mesh -170g/m²

CARACTÉRISTIQUES

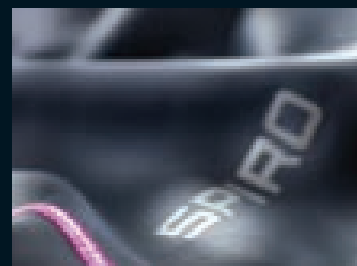
- Tissu performant COOL-DRY®
- Élimination rapide de l'humidité pour assurer fraîcheur et confort de la peau
- Coupe moulante pour maintenir les muscles et réduire l'effet bouffant
- Léger
- Panneaux latéraux en mesh pour plus d'aération
- Impression sur les coudes
- Coutures plates contrastées
- Conçu pour être porté à même la peau pour un maintien des muscles optimal
- Extensible 4 directions pour plus d'aisance
- Tenue ultra-moulante près du corps
- Coutures couvertes afin de réduire les irritations de la peau
- Empiècements galbés respirants
- Technologie avancée
- Séchage rapide
- Logo imprimé SPIRO ultra-réfléchissant en bas à droite
- Étiquette de cou remplacée par une impression à même le tissu

Points d'accès : Monocouche

Décoration : Transfert, Broderie, Impression sur les coudes



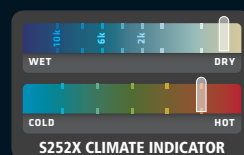
Anti slide elbow grips



Reflecting SPIRO print logo lower right side

GREY/MAUVE
(431/271C)

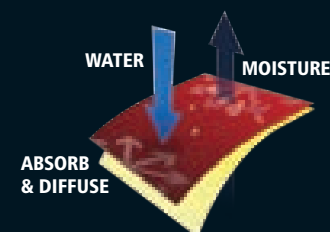
Lightweight

BLACK/RED
(BLK/1795)WHITE
(WHT)NAVY/WHITE
(5395/WHT)

Breathable contour fit panels
Lightweight
Quick drying

	XS	S	M	L	XL	2XL
UK	33	37	40	43	46	49
EURO	44	46	50	52	56	58
CASE:	20		PACK: 5			

COOL-DRY®
MOISTURE WICKING CONTROL



MIX & MATCH

CO-ORDINATE YOUR LOOK

1 CO-ORDINATING JACKETS

www.spiroactivewear.com



S108M&F



S173M&F



S180X



S180X



S172M&F

2 S252X COLOUR RANGE

www.spiroactivewear.com

BLACK/RED
(BLK/1795)GREY/MAUVE
(431/271C)NAVY/WHITE
(5395/WHT)WHITE
(WHT)BLACK/RED
(BLK/1795)

3 CO-ORDINATING LEGWEAR

www.spiroactivewear.com



S251M&F



S171M&F



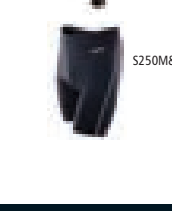
S179M&F



S251M&F



S179M&F



S250M&F



S174M&F



S183X



S187M&F



S184X

Scan QR Code to view the complete range



SPIRO BASE S253M

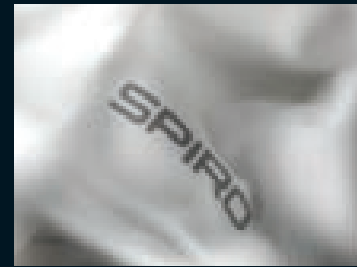
MENS QUICK DRY T-SHIRT

FABRIC:
160g/m² 100% Polyester

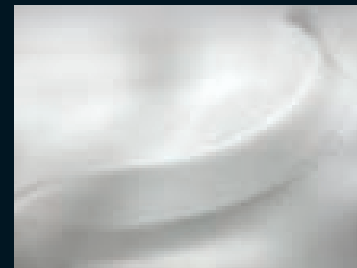
FEATURES

- Quick dry performance base layer keeps skin cool & comfortable
- Breathable
- Soft athletic material
- Reflective SPIRO print logo
- Flatlock stitch seams
- Reflective printed inner neck label
- Womens fit available

Decorators access: One layer
Decoration process: Transfer print or embroidery



Reflective SPIRO print logo



Soft athletic material



Breathable
Quick drying



Lightweight

WHITE
(WHT)



NAVY
(5395)

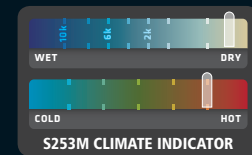


BLACK
(BLK)



LIME GREEN
(382)

	S	M	L	XL	2XL
UK	37	40	43	46	49
EURO	46	50	52	56	58
CASE:	25		PACK: 5		



100% Polyester, Interlock 160g/m²

CARACTÉRISTIQUES

- Tissu seconde peau avec traitement de séchage rapide Quick Dry
- Élimination rapide de l'humidité pour assurer fraîcheur et confort de la peau
- Léger
- Tissu doux Quick Dry conçu pour les performances sportives
- Logo imprimé SPIRO ultra-réfléchissant en bas à droite
- Couture courbe dans le dos
- Coutures couvertes
- Étiquette de cou remplacée par une impression à même le tissu

Points d'accès : Monocouche
Décoration : Transfert, Broderie



100% Polyester, Interlock 160g/m²

AUSSTATTUNG

- Schnell trocknend, Funktions-Base Layer
- Feuchtigkeitsregulierend- hält kühl
- Sehr leicht
- Schnell trocknend
- Gedrucktes Reflex-SPIRO -Logo auf der unteren rechten Seite
- Halbrunder Rückensaum mit Ziernaht
- Verdeckte Nähte
- Gedrucktes Nakenlabel

Veredelungszugang: n.v.
Veredelungsmöglichkeiten: Transfêrdruck, Stîck

MIX & MATCH

CO-ORDINATE YOUR LOOK

1 CO-ORDINATING JACKETS www.spiroactivewear.com



2 S253M COLOUR RANGE www.spiroactivewear.com



3 CO-ORDINATING LEGWEAR www.spiroactivewear.com



Scan QR Code to view the complete range



S254M

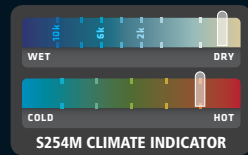
MENS QUICK DRY LONG SLEEVE T-SHIRT

FABRIC:
160g/m² 100% Polyester

FEATURES

- Quick dry performance base layer keeps skin cool & comfortable
- Breathable
- Soft athletic material
- Reflective SPIRO print logo
- Flatlock stitch seams
- Reflective printed inner neck label
- Womens fit available

Decorators access: One layer
Decoration process: Transfer or embroidery



Tissu très doux, 100% Polyester, Interlock 160g/m²

CARACTÉRISTIQUES

- Tissu avec traitement de séchage rapide Quick Dry
- Élimination rapide de l'humidité pour assurer fraîcheur et confort de la peau
- Tissu doux conçu pour les performances sportives
- Encolure dans le même tissu
- Étiquette de cou remplacée par une impression réfléchissante à même le tissu
- Logo imprimé SPIRO ultra-réfléchissant en bas à droite
- Couture courbe dans le dos
- Vêtement idéal en superposition

Points d'accès : Monocouche
Décoration : Transfert, Impression directe, Broderie



100% Polyester, Interlock 160g/m²

AUSSTATTUNG

- Schnelltrocknendes Funktions- T-shirt
- Feuchtigkeitsregulierend,- hält kühl
- Sehr weiches Material
- Abgesetzter Kragen
- Reflektierendes, gedrucktes Nackenlabel
- Gedrucktes Reflex- SPIRO - Logo auf der unteren rechten Seite
- Halbrunder Rückensaum mit Ziernaht
- Ideal als Sportbekleidung -kann als Mittelschicht getragen werden

Veredelungszugang: n.v.
Veredelungsmöglichkeiten: Transfer & Directdruck, Stick



Breathable
Quick drying

LIME GREEN
(382)



BLACK
(BLK)



NAVY
(5395)



WHITE
(WHT)

	S	M	L	XL	2XL
UK	37	40	43	46	49
EURO	46	50	52	56	58

CASE: 25 **PACK:** 5

MIX & MATCH

CO-ORDINATE YOUR LOOK

1 CO-ORDINATING JACKETS www.spiroactivewear.com



2 S254M COLOUR RANGE www.spiroactivewear.com



3 CO-ORDINATING LEGWEAR www.spiroactivewear.com



Scan QR Code to view the complete range



S256M

MENS FREEDOM SOFT SHELL JACKET

FABRIC:
WATER REPELLENT, BREATHABLE, WINDPROOF
 310g/m² 2 LAYER BONDED FABRIC comprising:
 - Outer-layer: 100% Polyester
 - Inner-layer: 100% Polyester microfleece
 Side panel & cuff: 92% Polyester, 8% Elastane
 Internal pocket mesh: 100% Polyester

FEATURES

- Contour shaped panels
- Full front zip with inner storm flap
- Stand up collar
- Thumbhole cuff
- Back pocket with self lock waterproof zip
- Reflective print detail
- Longer length back panel
- Media player loophole
- Soft athletic stretch fabric
- Comfort fitted style in a compound knitted softshell
- Women's fit available

Decorators access: Open
Decoration process: Embroidery



Corps Principal - Tissu Softshell 310g/m² à 2 couches soudées:
 - Extérieur : 100% Polyester
 - Intérieur : 100% Polyester micro polaire
 Pièces latérales et poignets : 92% Polyester, 8% Élasthanne
 Intérieur poche en maille file : 100% Polyester

CARACTÉRISTIQUES

- Empiècements galbés respirants
- Fermeture zippée à l'avant avec rabat de protection intérieur
- Col montant
- Poignets avec fente pour le pouce
- Poche dans le dos avec zip autobloquant imperméable et finition imprimée réfléchissante
- Panneau plus long dans le dos
- Passage pour les écouteurs
- Existe en modèle pour femme

Points d'accès : Monocouche
Décoration : Transfert ou broderie



Hauptfarbe vorne und hinten- 310g/m² 2 lagige Softshell Jacke bestehend aus:
 - Außen: 100% Polyester
 - Innen: 100% Polyester Micro Fleece
 Seitliche Einsätze und Bündchen: 92% Polyester, 8% Elasthan
 Taschenfutter Innen: 100% Polyester

AUSSTATTUNG

- Belüftungs-Einsätze
- durchgehender Reißverschluss vorne mit Windschutzleiste innen
- Stehkragen
- Daumenlöchern
- Tasche hinten mit wasserdichtem Reißverschluss und reflektierendes, gedrucktes Design
- verlängerter Rücken
- tailliert
- Anschlussmöglichkeit von MP-3-Player, Kopfhörer usw
- Auch für Herren erhältlich

Veredelungszugang: n.v
Veredelungszugang: Stick

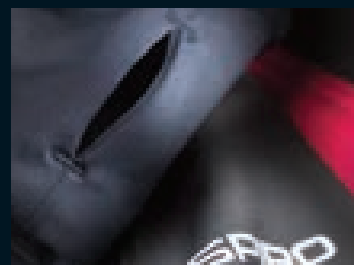
NEW



Water Repellent
 Breathable
 Windproof
 Lightweight
 Quick Dry Finish



Back pocket with self lock waterproof zip



Thumbhole cuff

MAGENTA/BLACK
(221/BLK)

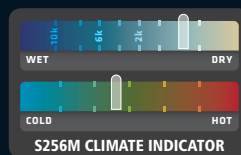
STRETCH
 2-LAYER SOFT SHELL



AQUA/BLACK
(3125/BLK)



NEON LIME/BLACK
(382/BLK)



	S	M	L	XL	2XL	3XL
UK	37	40	43	46	49	52
EURO	46	50	52	56	58	62

CASE: 10 **PACK:** 5

MIX & MATCH

CO-ORDINATE YOUR LOOK

1 S256M COLOUR RANGE www.spiroactivewear.com



2 CO-ORDINATING TOPS www.spiroactivewear.com



3 CO-ORDINATING LEGWEAR www.spiroactivewear.com



Scan QR Code to view the complete range



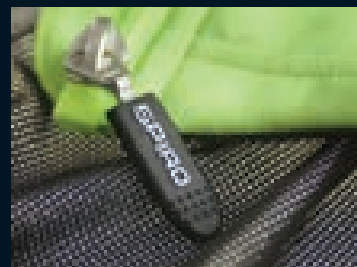
SPIRO**S262M****MENS AIRFLOW SOFT SHELL GILET****FABRIC:**

BREATHABLE, WINDPROOF
310g/m² 2 LAYER BONDED FABRIC comprising:
 - Outer-layer: 100% Polyester
 - Inner-layer: 100% Polyester fleece
Mesh Back Panel: 92% Polyester, 8% Elastane

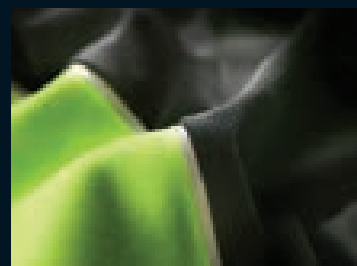
FEATURES

- Breathable contour back mesh panel
- Reflective piping and print detail
- Full front zip with inner storm flap
- Stand up collar
- Longer shaped back panel
- Bound armholes
- Elasticised hem with rubber gripper
- Soft athletic stretch fabric
- Ideal layer garment
- Comfort fit
- Pocket free to aid streamline contour shape
- Women's fit available

Decorators access: Open
Decoration process: Embroidery



Full front zip with inner storm flap



Reflective piping on back contour panels



Tissu Softshell 310g/m² à 2 couches soudées:
 - Couche extérieure: 100% Polyester
 - Couche intérieure: 100% Polaire Polyester
 Empiècement dos en maille filet: 92% Polyester, 8% Élasthanne

CARACTÉRISTIQUES

- Empiècements galbés respirants en maille filet dans le dos
- Passepoil réfléchissant autour de l'empiecement dans le dos
- Fermeture zippée à l'avant avec rabat de protection intérieur
- Col montant
- Panneau plus long dans le dos
- Emmanchures élastiquées
- Finition imprimé réfléchissante à l'avant
- Ourlet élastiqué
- Tissu extensible doux conçu pour les performances sportives
- Vêtement idéal en superposition
- Coupe confortable
- Sans poche pour un meilleur profil aérodynamique
- Existe en modèle pour femme

Points d'accès: Ouvert
Décoration: Broderie



310g/m² 2 lagiges Verbund Material bestehend aus:
 - Außen: 100% Polyester
 - Innen: 100% Polyester (Fleece)
 Netzeinsätze am Rücken: 92% Polyester, 8% Elastan

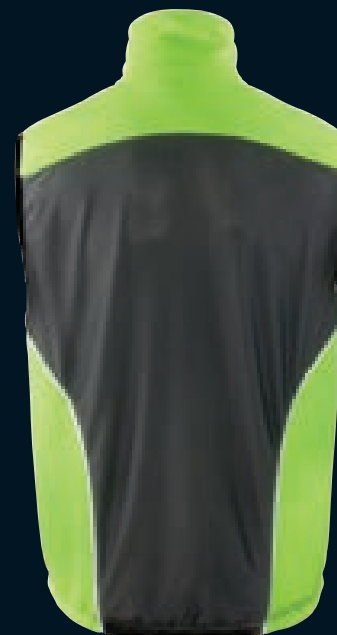
AUSSTATTUNG

- Belüftungs-Einsätze hinten mit Netzfutter
- Reflektierende Paspeln an den Einsätzen hinten
- Durchgehender Reißverschluss vorne mit Windschutzleiste innen
- Stehkragen
- Verlängerter Rücken
- Elastischer Armausschnitt
- Reflektierendes Druck Design vorne
- Elastischer Saum
- Weiches, sportliches, dehnfähiges Gewebe
- Ideal zum Kombinieren
- Bequemer Passform
- Ohne Tasche für eine verbesserte, schnittige Kontur
- Auch für Herren erhältlich

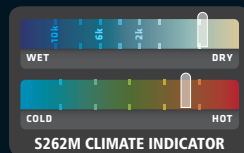
Veredelungszugang: n.v
Veredelungszugang: Stick

NEWNEON GREEN/BLACK
(7487/BLK)

Windproof
 Breathable
 Quick Dry Finish
 Ideal Layer Garment



Breathable contour back mesh panel

BLACK
(BLK)**STRETCH**
2-LAYER SOFT SHELL

	S	M	L	XL	2XL	3XL
UK	37	40	43	46	49	52
EURO	46	50	52	56	58	62
CASE:	10		PACK: 5			

MIX & MATCH

CO-ORDINATE YOUR LOOK

1 S262M COLOUR RANGE www.spiroactivewear.comNEON GREEN/BLACK
(7487/BLK)BLACK
(BLK)NEON GREEN/BLACK
(7487/BLK)BLACK
(BLK)NEON GREEN/BLACK
(7487/BLK)**2 CO-ORDINATING TOPS** www.spiroactivewear.com

S254M



S254M



S252X



S252X



S178X

3 CO-ORDINATING LEGWEAR www.spiroactivewear.com

S251M



S171M



S179M



S251M



S171M



S250M



S184X



S184X



S250M



S174M



S264X



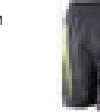
S183X



S183X



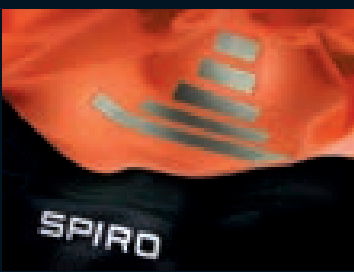
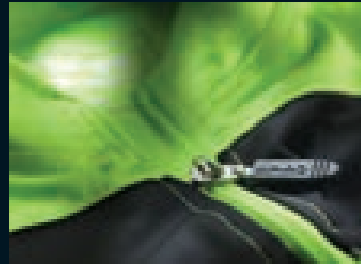
S187M



S184X

Scan QR Code to view the complete range





WOMENS

COLLECTION

S108F WOMENS NERO JACKET.....	52
S170F WOMENS SPRINT BASE TOP.....	54
S171F WOMENS SPRINT PANT	56
S172F WOMENS RACE SYSTEM JACKET.....	58
S173F WOMENS AIRSTREAM JACKET	60
S174F WOMENS SPRINT SHORT	62
S175F WOMENS TEAM 3-LAYER SOFT-SHELL JACKET.....	64
S176F WOMENS TRAINING SHIRT	66
S177F WOMENS TEAM SPIRIT POLO.....	68
S179F WOMENS MICRO-LITE TEAM PANT	70
S182F WOMENS DASH TRAINING SHIRT	72
S250F WOMENS BODYFIT BASE LAYER SHORTS.....	74
S251F WOMENS BODYFIT BASE LAYER LEGGINGS	76
S253F WOMENS QUICK DRY PERFORMANCE SHORT SLEEVE T-SHIRT	78
S254F WOMENS QUICK DRY PERFORMANCE LONG SLEEVE T-SHIRT	80

NEW FOR 2014

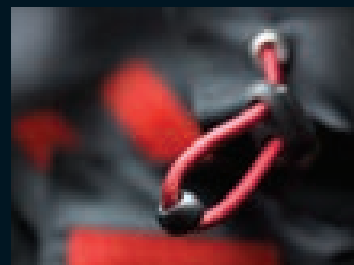
S255F WOMENS BIKEWEAR LONG SLEEVED PERFORMANCE TOP	NEW 104
S256F WOMENS FREEDOM SOFT SHELL JACKET	NEW 82
S261F WOMENS SKORT.....	NEW 84
S262F WOMENS AIRFLOW SOFT SHELL GILET.....	NEW 86

Scan QR Code to view the complete range

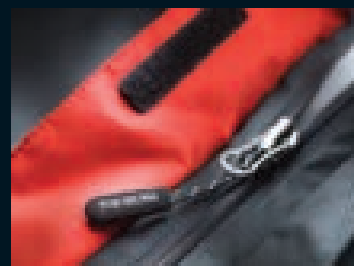


SPIRO**S108F****WOMENS NERO JACKET****FABRIC:****OUTER:** 140g/m² HydraDri 100% Polyester**SHOULDER:** 160g/m² HydraDri 100% Polyester**LINING:** 100% Polyester sport mesh**HOOD:** 100% Polyester**FEATURES**

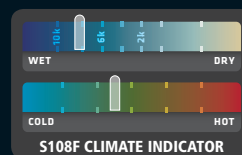
- Fully taped waterproof seams 1600mm
- Waterproof: 8000mm
- Breathable: 3000g
- Windproof
- Lightweight & quick drying
- Detachable waterproof hood
- 2 lined zip closing pockets
- Tear release adjustable cuff
- Adjustable shockcord hem
- Tear release double storm flap
- Mens fit available

Decorators access: Front left chest only**Decoration process:** Direct Print or embroidery

Adjustable shockcord hood



Tear release storm flap

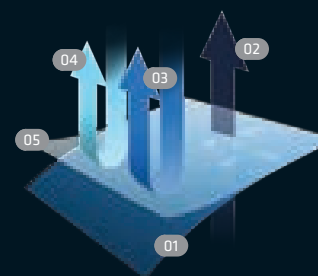


S108F CLIMATE INDICATOR

Waterproof: 8000mm
Breathable: 3000g
Windproof



Lightweight

BLACK
(BLK)**HydraDri**

- 01 Outer Fabric
- 02 Breathable
- 03 Waterproof
- 04 Windproof
- 05 Waterproof coating

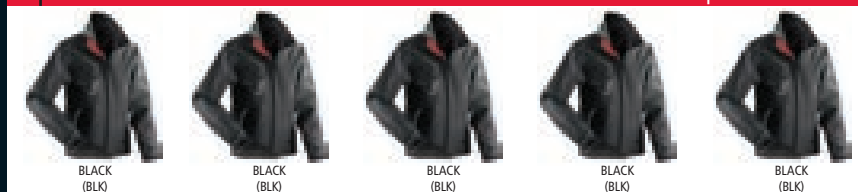
	XS	S	M	L	XL
UK	8	10	12	14	16
EURO	34	36	38	40	42

CASE: 10

PACK: 5

MIX & MATCH

CO-ORDINATE YOUR LOOK

1 S108F COLOUR RANGEwww.spiroactivewear.com**2 CO-ORDINATING TOPS**www.spiroactivewear.com**3 CO-ORDINATING LEGWEAR**www.spiroactivewear.com

Extérieur : Polyester Dobby HydraDri 140g/m² Polyester sport en maille filet,
Capuche : 100% Polyester Dobby composé

CARACTÉRISTIQUES

- Coutures thermocollées parfaitement étanches 1,600mm
- Léger et séchage rapide
- Capuche imperméable amovible
- 2 poches latérales zippées doublées
- Poignets réglables par fermeture velcro
- Ourlet réglable par cordon avec stoppers
- Rabat de protection à fermeture velcro

Points d'accès : Poche poitrine gauche uniquement**Décoration :** Impression ou broderie

Aussenseite: 140g/m² HydraDri Polyester Futter: Sportnetz aus 100%
Polyester. Kapuze: 100% Polyester Dobby mit zweilagiger wasserdichter
Beschichtung

AUSSTATTUNG

- Voll versiegelte wasserdichte Nähte 1,600mm
- Leicht und schnell trocknend
- Abnehmbare wasserdichte Kapuze
- 2 Seitentaschen mit Reißverschluss
- Ärmelaufschläge durch Klett verstellbar
- Kordelzug mit Stopperrn im Bund
- Windschutzleiste mit Klettverschluss

Veredelungszugang: Zugang auf linker Brustseite**Veredelungsmöglichkeiten:** Druck oder Stick

Scan QR Code to view the complete range



S170F

WOMENS SPRINT BASE TOP

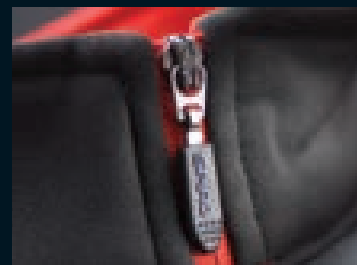
FABRIC:
280g/m² Z-TECH® stretch fabric
95% Polyester 5% Elastane

FEATURES

- Performance athletic top with Z-TECH® Stretch
- Soft athletic 4 way stretch fabric
- Quick drying
- Midweight
- Breathable
- ¼ front zip fastening
- Contemporary styled scalloped cuff
- Reflective Z-TECH® Stretch logo on left cuff
- Keeps the skin cool and comfortable
- Ideal layer garment, good warmth factor when worn as a layer
- Mens fit available

Decorators access: One layer

Decoration process: Digital transfer print, screen print transfer or embroidery



¼ front zip fastening



Contemporary styled scalloped cuff



Tissu Stretch Z-TECH® 280g/m² respirant et léger
95% Polyester 5% Elasthanne

CARACTÉRISTIQUES

- Veste conçu pour les performances sportives en stretch Z-TECH®
- Tissu doux et stretch extensible 4 directions
- Séchage rapide
- Poids moyen
- Fermeture zippée 1/4 à l'encolure
- Poignets resserrés style moderne
- Logo réfléchissant Z-TECH® Stretch sur le poignet gauche
- Conserve la fraîcheur de la peau et procure un confort maximal
- Vêtement idéal en superposition, bonne protection thermique quand superposé à d'autres vêtements

Points d'accès : Monocouche
Décoration : Transfert numérique et Serigraphie



280g/m² Z-TECH® Stretchmaterial. Atmungsaktiv und leicht
95% Polyester 5% Elastan

AUSSTATTUNG

- Leistungsstarkes Sportoberteil mit Z-TECH® Stretch
- Weiches sporttaugliches Material aus Vier-Wege-Stretch
- Schnelltrocknend
- Mittelschwer
- Viertellanger Reißverschluss an der Vorderseite
- Sportlicher Armelabschluss
- Reflektierendes Logo von Z-TECH® Stretch auf dem linken Bündchen
- Kühles Hautgefühl beim Tragen und angenehme Passform
- Ideal geeignet zum Tragen in mehreren Schichten, guter Warmhaltefaktor beim Tragen als Zwischenschicht

Veredelungszugang: Nur 1-lagig
Veredelungsmöglichkeiten: Transferdruck oder Stick, Digital Transferdruck



Breathable
Midweight



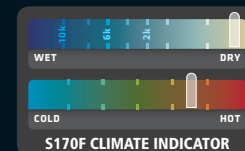
BLACK/GREY
(BLK/425)



BLACK/RED
(BLK/187)

Z-TECH
STRETCH

	XS	S	M	L	XL
UK	8	10	12	14	16
EURO	34	36	38	40	42
CASE:	10		PACK: 5		



MIX & MATCH

CO-ORDINATE YOUR LOOK

1 S170F COLOUR RANGE www.spiroactivewear.com

2 CO-ORDINATING TOPS www.spiroactivewear.com

3 CO-ORDINATING LEGWEAR www.spiroactivewear.com

Scan QR Code to view the complete range



SPIRO

S171F

WOMENS SPRINT PANT

FABRIC:
248g/m² Z-TECH® stretch 92% Polyester 8% Elastane

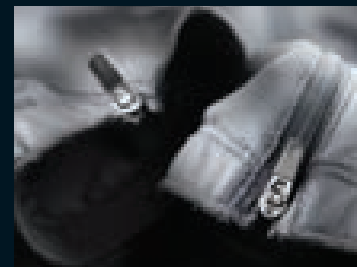
FEATURES

- Athletic sport pant with Z-TECH® Stretch
- Soft athletic 4 way stretch fabric
- Extremely lightweight
- Breathable
- Quick drying
- High waisted
- Elasticated waist with soft internal drawcord for comfort fit
- Zip opening to lower legs with grip strip
- Z-Tech stretch logo on left thigh in reflective material
- SPIRO logo in the middle of back section in reflective material
- Keeps the skin cool and comfortable super fit
- Mens fit available

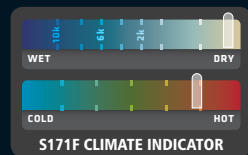
Decorators access: One layer
Decoration process: Transfer print or embroidery



Zip closing back pocket



Zip opening to lower legs with grip strip



TISSU

Tissu stretch Z-TECH® 248g/m² 92% Polyester, 8% Elasthanne

CARACTÉRISTIQUES

- Pantalon de sport en stretch Z-TECH®
- Tissu doux et stretch extensible 4 directions
- Très léger
- Séchage rapide
- Taille élastiquée avec cordon de serrage intérieur pour un ajustement parfait
- Bas de jambe zippé avec bande auto-agrippante.
- Logo réfléchissant Z-Tech Stretch sur la cuisse gauche
- Conserve la fraîcheur de la peau et procure un confort maximal

Points d'accès : Monocouche
Décoration : Transfert ou broderie



STOFF

248g/m² Z-TECH® Stretchmaterial. 92% Polyester, 8% Elasthan

AUSSTATTUNG

- Athletische Sporthose aus Z-Tech Stretchmaterial
- Weiches sporttaugliches Material aus Vier-Wege-Stretch
- Extrem leicht
- Schnelltrocknend
- Elastischer Bund mit weichem Innenzugband für bequemen Sitz
- Reißverschlüsse im Wadenbereich mit Klettband
- Reflektierendes Logo von Z-TECH® Stretch auf der linken Wade
- Kühles Hautgefühl beim Tragen und angenehme Passform

Veredelungszugang: Nur 1-lagig
Veredelungsmöglichkeiten: Transferdruck oder Stick



**Z-TECH
STRETCH**



Lightweight

Breathable
Lightweight

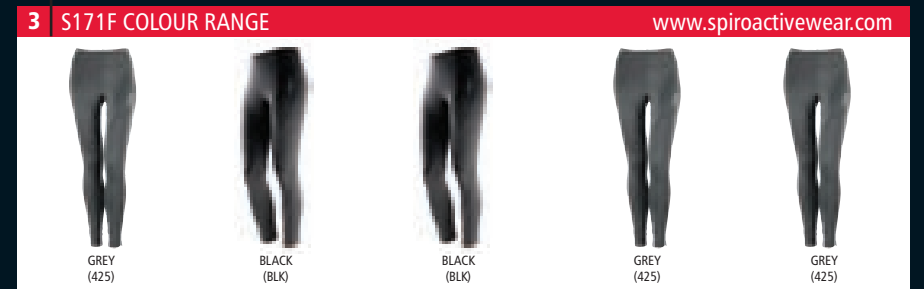
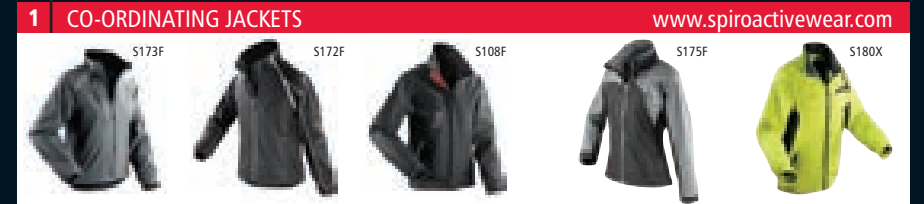
BLACK
(BLK)

GREY
(425)

	S	M	L	XL
UK	10	12	14	16
EURO	38	40	42	44
WAIST	24"/61cm	26"/66cm	28"/71cm	30"/76cm
CASE:	10		PACK: 5	

MIX & MATCH

CO-ORDINATE YOUR LOOK



Scan QR Code to view the complete range



S172F

WOMENS RACE SYSTEM JACKET

FABRIC:
WATER REPELLENT, BREATHABLE 5000g, WINDPROOF
240gm² 3 LAYER BONDED FABRIC comprising:


- Outer-layer: 100% Polyester HydraDri
- Mid-layer: Waterproof 5000mm, breathable, windproof TPU membrane
- Inner-layer: 100% Polyester tricot
- Contrast Shoulders: 145gm² 100% Polyester brushed tricot

FEATURES

- A dual system high tech sport training jacket
- Detachable zip off sleeve and back collar
- Lightweight & quick drying
- 2 mesh lined zip closing side pockets
- Hidden mesh back pocket
- Stretch comfort fit to cuffs & underarms
- Reflective piping to arms & back panel
- Inner grip strip at base of the jacket
- Mens fit available

Decorators access: Back access only
Decoration process: Digital transfer print or embroidery

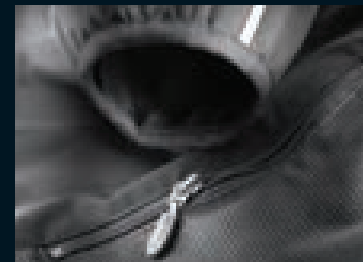
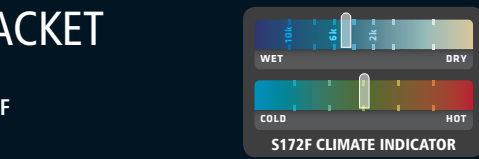
Waterproof: 5000mm
Breathable: 5000g
Windproof

 Couche extérieure : Tissu 3 couches soudées 100% HydraDri
Couche intérieure : Polaire sport contrecollé 100% Polyester Empiècement
épaule : 100% Polyester avec tricot brossé et revêtement pu imperméable

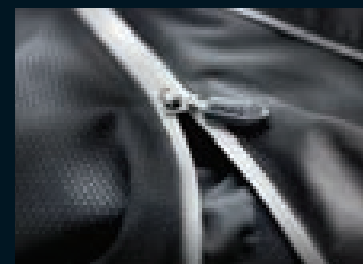
CARACTÉRISTIQUES

- Manches et arrière du col zippés et détachables
- Ultra légère et séchage rapide
- Poignets et aisselles stretch assurant un confort maximal
- Passepoil décoratif réfléchissant sur les bras et dans le dos
- Bande auto-agrippante intérieure à la base de la veste
- 2 poches latérales zippées doublées en maille filet

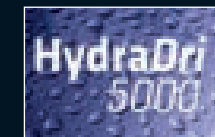
Points d'accès : Poitrine gauche et dos
Décoration : Transfert numérique ou broderie



2 mesh lined zip closing side pockets



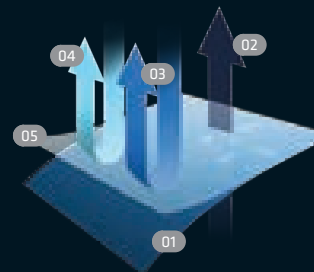
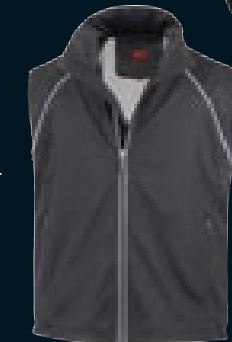
Detachable zip off sleeve and back collar



BLACK (BLK)



Detachable zip off sleeve and back collar



HydraDri

- 01 Outer Fabric
- 02 Breathable
- 03 Waterproof
- 04 Windproof
- 05 Waterproof coating

	S	M	L	XL
UK	10	12	14	16
EURO	36	38	40	42
	CASE: 10		PACK: 5	


MIX & MATCH

CO-ORDINATE YOUR LOOK

1 S172F COLOUR RANGE www.spiroactivewear.com



2 CO-ORDINATING TOPS www.spiroactivewear.com



3 CO-ORDINATING LEGWEAR www.spiroactivewear.com



Scan QR Code to view the complete range



S173F

WOMENS AIRSTREAM JACKET

FABRIC:
OUTER: 100% HydraDri Nylon taslon with dry coating
LINING: 100% Polyester mesh lining
INSET: Ultra reflecting anti UV panels

FEATURES

- Waterproof: 5000mm
- Breathable: 5000g
- Windproof
- Taped seams
- Lightweight comfort fit with maximum protection
- Quick drying
- Reflective materials throughout
- Detachable waterproof hood with shockcord adjusters
- Full front waterproof zip fastening
- 2 mesh lined waterproof zip closing side pockets
- Side ventilation pockets with mesh lining
- Adjustable shockcord hem
- Adjustable tear release cuff adjusters
- Waterproof zip fastening chest pocket
- Zip fastening back pocket
- Mens fit available

Decorators access: Back access only
Decoration process: Embroidery



Extérieur : 100% Nylon Taslon HydraDri Coupe-vent
 Doublure : 100% Polyester sport maille filet
 Incrustation : Panneaux anti UV ultra-réfléchissants

CARACTÉRISTIQUES

- Léger et confortable offrant une protection maximale
- Séchage rapide
- Panneaux incrustés ultra-réfléchissants avec protection anti UV
- Capuche imperméable amovible avec cordon de serrage avec stoppers
- Fermeture zippée imperméable à l'avant
- 2 poches latérales imperméables zippées doublées en maille filet
- Poches latérales de ventilation avec doublure maille filet
- Ourlet réglable par cordon avec stoppers

Points d'accès : Via le dos uniquement
Décoration : Broderie

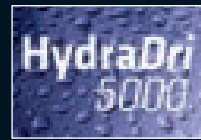


Aussenseite: 100% HydraDri Nylon Taslon
 Futter: 100% Polyester mit Sportneffutter
 Einsatz: Extrem reflektierende Einsätze mit Anti-UV Schutz

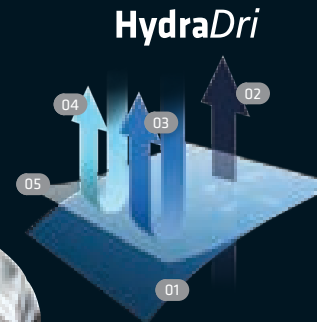
AUSSTATTUNG

- Sehr leichtes Material für hohen Tragekomfort
- Schnelltrocknend
- Extrem reflektierende Einsätze mit Anti-UV Schutz
- Abnehmbare wasserdichte Kapuze mit Kordelstopperr
- Durchgehender, wasserdichter Reißverschluss an der Vorderseite mit Kinnschutz
- 2 seitliche, wasserdichte Reißverschlussaschen mit Netzfutter
- Seitliche Lüftungsschlitze mit Netzfutter und Reißverschluss
- Anpassbarer Kordelzug

Veredelungszugang: Rückseite
Veredelungsmöglichkeiten: Stick



GREY
(425)



- 01 Outer Fabric
- 02 Breathable
- 03 Waterproof
- 04 Windproof
- 05 Waterproof coating



Waterproof: 5000mm
Breathable: 5000g
Windproof

	XS	S	M	L	XL
UK	8	10	12	14	16
EURO	34	36	38	40	42
CASE:	10		PACK: 5		

MIX & MATCH

CO-ORDINATE YOUR LOOK

1 S173F COLOUR RANGE www.spiroactivewear.com



2 CO-ORDINATING TOPS www.spiroactivewear.com



3 CO-ORDINATING LEGWEAR www.spiroactivewear.com



Scan QR Code to view the complete range



SPIRO**S174F****WOMENS SPRINT TRAINING SHORT**

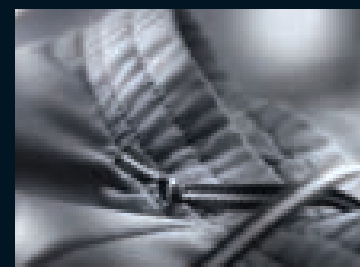
FABRIC:
248g/m² Z-TECH® stretch 92% Polyester 8% Elastane

FEATURES

- Athletic sport pant with Z-TECH® Stretch
- Soft athletic 4 way stretch fabric
- Extremely lightweight
- Quick drying
- Breathable
- High waisted
- Dual elastic waistband for comfort fit
- Reflective SPIRO logo center back position
- Z-TECH® Stretch logo on left thigh in reflective material
- Keeps the skin cool and comfortable super fit
- Ideal layer garment, good warmth factor when worn as a layer
- Mens fit available

Decorators access: One layer

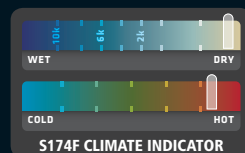
Decoration process: Transfer print or embroidery



Dual elastic waistband for comfort fit



Z-TECH® Stretch logo on left thigh in reflective material



Tissu stretch Z-TECH® 248g/m² 92% Polyester, 8% Elasthanne

CARACTÉRISTIQUES

- Short de sport en stretch Z-TECH®
- Tissu doux et stretch extensible 4 directions
- Très léger
- Séchage rapide
- Double bande élastique à la taille pour plus de confort
- Logo Spiro réfléchissant situé au centre sur l'arrière du short
- Logo réfléchissant Z-TECH® Stretch sur la cuisse gauche
- Maintient la fraîcheur de la peau et procure un confort maximal
- Vêtement idéal en superposition, bonne protection thermique quand superposé à d'autres vêtements

Points d'accès : Monocouche
Décoration : Transfert ou broderie



248g/m² Z-TECH® Stretchmaterial 92% Polyester 8% Elastan

AUSSTATTUNG

- Athletische Sporthose aus Z-TECH® Stretchmaterial
- Weiches, sportliches Stretchmaterial
- Extrem leicht und schnelltrocknend
- Elastisches Doppelzugband an der Taille für angenehmen Sitz
- Sicherheits-Reflexspaspeln und reflektierender Logoaufdruck vorne links und hinten oben mittig
- Die Haut bleibt kühl und komfortabel
- Tolle Paßform
- Ideal geeignet zum Tragen in mehreren Schichten, guter Warmhaltefaktor beim Tragen als Zwischenschicht

Veredelungszugang: Nur 1-lagig
Veredelungsmöglichkeiten: Transferdruck oder Stick

GREY
(426)**Z-TECH
STRETCH**

Lightweight

BLACK
(BLK)**Breathable
Lightweight**

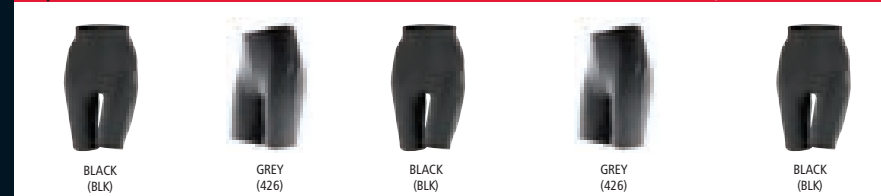
	S	M	L	XL
UK	10	12	14	16
EURO	38	40	42	44
WAIST	24"/61cm	26"/66cm	28"/71cm	30"/76cm

CASE: 10

PACK: 5

MIX & MATCH

CO-ORDINATE YOUR LOOK

1 CO-ORDINATING JACKETSwww.spiroactivewear.com**2 CO-ORDINATING TOPS**www.spiroactivewear.com**3 S174F COLOUR RANGE**www.spiroactivewear.com

Scan QR Code to view the complete range




S175F

WOMENS TEAM 3-LAYER SOFT SHELL JACKET

FABRIC:
WATER REPELLENT, BREATHABLE 2000g, WINDPROOF
240gm² 3 LAYER BONDED FABRIC comprising:
 - **Outer-layer:** 100% Polyester pongee 300T
 - **Mid-layer:** Waterproof 5000mm, breathable 2000g & windproof TPU membrane
 - **Inner-layer:** 100% Polyester 190g single jersey

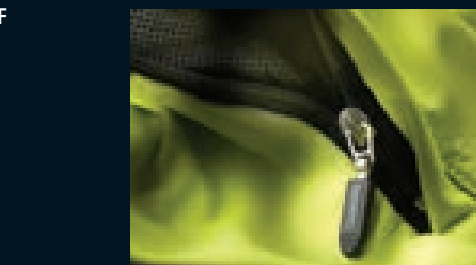
- FEATURES**
- Midweight & quick drying
 - Comfortable active sport fit
 - Wind protect longer back panel
 - Full front zip
 - 2 lined zip closing side pockets
 - 2 side zip closing ventilation pockets
 - Adjustable tear release cuff adjusters
 - Collar adjuster
 - Cable loop
 - Adjustable drawcord hem
 - Reflective SPIRO print logo
 - Reflective print design to front
 - Mens fit available

Decorators access: Left chest zip access
Decoration process: Transfer print or embroidery

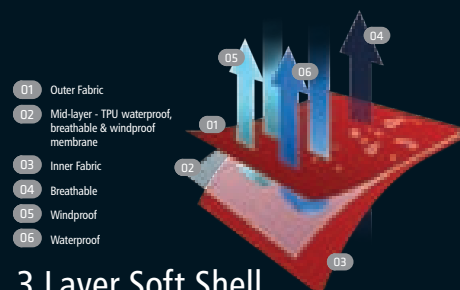
 Tissu : Tissu Softshell 3 couches soudées
 Couche extérieure : 100% Polyester Pongee 300T
 Couche intermédiaire : Membrane TPU imperméable
 Couche intérieure : 100% Polyester Jersey simple 190g


- CARACTÉRISTIQUES**
- Poids moyen et sèche vite
 - Coupe sportive et confortable
 - Technique de coutures plates
 - Panneau plus long dans le dos pour protéger du vent
 - Fermeture zippée à l'avant
 - 2 poches latérales zippées doublées
 - 2 poches latérales de ventilation zippées

Points d'accès : Fermeture zippée au niveau de la poitrine gauche
Décoration : Transfert ou broderie



2 side zip closing ventilation pockets



 Material: dreilagiges Softshell Material
 Innenseite: 100% Polyester Pongé 300T
 Mittelschicht: Wasserdichte TPU-Membran
 Aussenseite: 100% Polyester 190g Single Jersey

- AUSSTATTUNG**
- Mittelschwer und schnelltrocknend
 - Bequeme, aktive Passform
 - Flatlock-Nähte
 - Verlängertes Rückenteil - schützt vor Wind
 - Durchgehender Reißverschluss an der Vorderseite
 - 2 seitliche Reißverschlussaschen mit Netzflutter
 - Seitliche Lüftungsschlitze mit Reißverschluss

Veredelungszugang: Oberkörper links - Zugang über Reißverschluss
Veredelungsmöglichkeiten: Transferdruck oder Stick



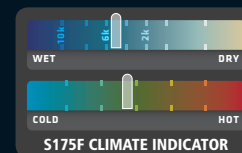
NEON LIME/GREY
(382/425)



BLACK/RED
(BLK/200)

BLACK/GREY
(BLK/425)

	XS	S	M	L	XL
UK	8	10	12	14	16
EURO	34	36	38	40	42
CASE:	10		5		
PACK:	5				



MIX & MATCH

CO-ORDINATE YOUR LOOK

1 | S175F COLOUR RANGE www.spiroactivewear.com



2 | CO-ORDINATING TOPS www.spiroactivewear.com



3 | CO-ORDINATING LEGWEAR www.spiroactivewear.com



Scan QR Code to view the complete range



S176F

WOMENS TRAINING SHIRT

FABRIC:
100% waffle knitted Polyester, 145g/m² COOL-DRY® mesh

FEATURES

- Performance lightweight athletic top
- Precision fit body mapping design
- Cover stitch seams
- Soft athletic stretch COOL-DRY® fabric
- Quick drying
- Breathable
- Lightweight
- Keeps the skin cool and comfortable
- Ideal layer garment, good warmth factor when worn as a layer
- Mens fit available

Decorators access: One layer
Decoration process: Transfer print or embroidery



Printed SPIRO shoulder design



Lightweight

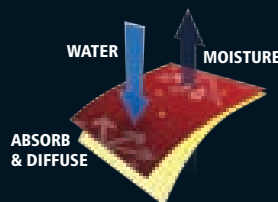
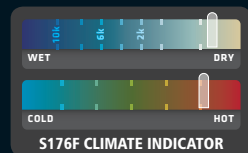


BLACK/RED
(BLK/200)

BLACK/GREY
(BLK/425)



NEON LIME/GREY
(382/425)



100% Polyester, maille filet nid d'abeille COOL-DRY® 145g/m² respirant, très léger

CARACTÉRISTIQUES

- Maillot de sport léger et performant
- S'ajuste avec précision aux contours du corps
- Coutures couvertes
- Tissu doux et stretch Cool-Dry conçu pour les performances sportives
- Séchage rapide
- Léger
- Maintient la fraîcheur de la peau et procure un confort maximal
- Vêtement idéal en superposition, bonne protection thermique quand superposé à d'autres vêtements

Points d'accès : Monocouche
Décoration : Transfert ou broderie

100% Waffelstrick-Polyester 145g/m² COOL-DRY® Netzfutter atmungsaktiv, extreme leicht

AUSSTATTUNG

- Extreme leichtes, leistungsfähiges Funktionsshirt
- Körperbetonter Schnitt für präzise Passform
- Verschiedene Ziernähte
- Weiches, sportliches COOL-DRY® Material
- Schnelltrocknend
- Leicht
- Die Haut bleibt kühl und komfortabel
- Ideal geeignet zum Tragen in mehreren Schichten, guter Warmhaltefaktor beim Tragen als Zwischenschicht

Veredelungszugang: Nur 1-lagig
Veredelungsmöglichkeiten: Transferdruck oder Stick

	XS	S	M	L	XL
UK	8	10	12	14	16
EURO	34	36	38	40	42

CASE: 20 **PACK:** 5

Breathable
Extremely lightweight

MIX & MATCH

CO-ORDINATE YOUR LOOK

1 CO-ORDINATING JACKETS www.spiroactivewear.com

2 S176F COLOUR RANGE www.spiroactivewear.com

BLACK/RED (BLK/200) BLACK/GREY (BLK/425) NEON LIME/GREY (382/425) BLACK/RED (BLK/200) BLACK/GREY (BLK/425)

3 CO-ORDINATING LEGWEAR www.spiroactivewear.com

Scan QR Code to view the complete range



S177F

WOMENS TEAM SPIRIT POLO

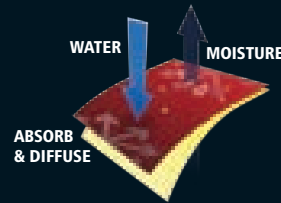
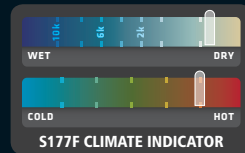
FABRIC:
100% Polyester, 145g/m² COOL-DRY® waffle knit mesh

FEATURES

- Performance lightweight polo
- Reflective SPIRO print logo on right bottom hem
- Dropped hem
- Soft comfort fit COOL-DRY® fabric
- Soft feel collar
- Quick drying
- Breathable
- Lightweight
- 3 button neck closing
- Keeps the skin cool and comfortable
- Ideal layer garment, good warmth factor when worn as a layer
- Mens fit available

Decorators access: One layer

Decoration process: Transfer print or embroidery



100% Polyester, maille filet nid d'abeille COOL-DRY® 145g/m²

CARACTÉRISTIQUES

- Polo léger technique
- Motif imprimé
- Tissu doux COOL-DRY, coupe confortable
- Séchage rapide
- Léger
- Plaquette 3 boutons
- Maintient la fraîcheur de la peau et procure un confort maximal
- Vêtement idéal en superposition, bonne protection thermique quand superposé à d'autres vêtements

Points d'accès : Monocouche
Décoration : Impression ou broderie



100% Polyester 145g/m² COOL-DRY-NETZ in Waffeloptik

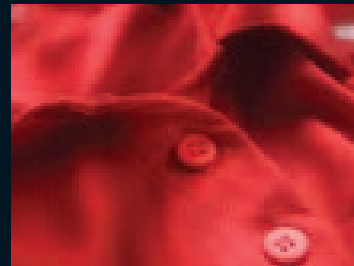
AUSSTATTUNG

- Sehr leichtes Funktionspolohemd
- Vorderseite mit aufgedrucktem Streifen-Muster und SPIRO Logo unten rechts
- Verlängerter Rücken
- COOL-DRY® Gewebe mit einem angenehmen Tragekomfort
- Schnelltrocknend
- Leicht
- 3er- Knopfleiste
- Die Haut bleibt kühl und komfortabel
- Ideal geeignet zum Tragen in mehreren Schichten, guter Warmhaltefaktor beim Tragen als Zwischenschicht

Veredelungszugang: Nur 1-lagig
Veredelungsmöglichkeiten: Transferdruck oder Stick



Lightweight



3 button neck closing

Breathable
Extremely lightweight
Quick drying



RED/WHITE
(1795/WHT)



BLACK/RED
(BLK/1795)

BLACK/WHITE
(BLK/WHT)

NAVY/WHITE
(5395/WHT)

ROYAL/NAVY
(072/5395)

WHITE/NAVY
(WHT/5395)

WHITE/RED
(WHT/1795)

	XS	S	M	L	XL
UK	8	10	12	14	16
EURO	34	36	38	40	42

CASE: 20 PACK: 5

MIX & MATCH

CO-ORDINATE YOUR LOOK

1 CO-ORDINATING TOPS www.spiroactivewear.com



2 S177F COLOUR RANGE www.spiroactivewear.com



3 CO-ORDINATING LEGWEAR www.spiroactivewear.com



Scan QR Code to view the complete range



S179F

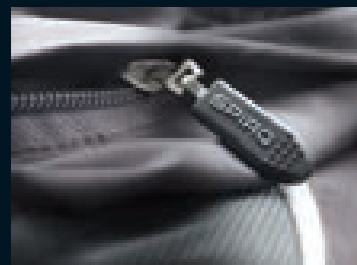
WOMENS MICRO-LITE TEAM PANT

FABRIC:
50D microfiber-microlite 100% Polyester

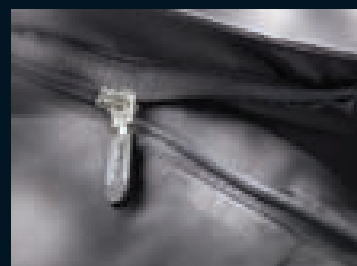
FEATURES

- Anatomically designed lightweight sport pant
- Breathable
- Quick drying
- Keeps skin cool & comfortable
- Ventilation panels in sweat zones
- Mesh lined
- 2 zip closing side pockets
- Zip opening lower leg
- Comfortable active sport fit to enhance performance
- Drawcord waist with elastic waistband for comfort fit
- Concealed key pocket
- Reflecting SPIRO Print logo
- Reflective rear detail
- Mens fit available

Decorators access: One layer
Decoration process: Transfer print or embroidery



2 zip closing side pockets



Zip opening lower leg



Microfibre 50D 100% Polyester avec empiècement en maille filet, protection contre les UV, traitement antibactérien et désodorisant, antistatique

CARACTÉRISTIQUES

- Pantalon de sport technique léger et de coupe ergonomique
- Très Léger
- Séchage rapide
- Maintient la fraîcheur de la peau et procure un confort maximal
- Panneaux de ventilation dans les zones de transpiration
- Doublure en maille filet
- Coupe sportive et confortable pour une meilleure performance
- Taille élastiquée avec cordon de serrage pour un maximum de confort
- Poche pour clé cachée
- Logo SPIRO imprimé ultra-réfléchissant

Points d'accès : Monocouche
Décoration : Impression ou broderie



50D Microfaser 100% Polyester mit Einsätze aus Netzfutter, UV-Schutz, antibakteriell und geruchshemmend, antistatisch

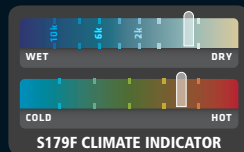
AUSSTATTUNG

- Ergonomische, leichte Sporthose
- Extrem leicht
- Schnelltrocknend
- Die Haut bleibt kühl und komfortabel
- Diverse Belüftungspaneel
- Netzinnefutter
- Bequeme, sportliche Passform zur Verbesserung der Leistung
- Elastischer Bund mit Kordelzug für eine angenehme Passform
- Verdeckte Schlüsseltasche
- Ultrareflektierendes SPIRO- Logo auf linker Hüfte

Veredelungszugang: Nur 1-lagig
Veredelungsmöglichkeiten: Transferdruck oder Stick



BLACK/RED (BLK/1795) GREY/AQUA (431/3125) NAVY/WHITE (5395/WHT) WHITE/NAVY (WHT/5395) WHITE/RED (WHT/1795)



Lightweight

GREY/LIME (431/382)

	XS	S	M	L	XL
UK	8	10	12	14	16
EURO	36	38	40	42	44
WAIST	22"/56cm	24"/61cm	26"/66cm	28"/71cm	30"/76cm
CASE:	10		PACK: 5		

Breathable
Extremely lightweight

MIX & MATCH

CO-ORDINATE YOUR LOOK



Scan QR Code to view the complete range



S182F

WOMENS DASH TRAINING SHIRT



Lightweight



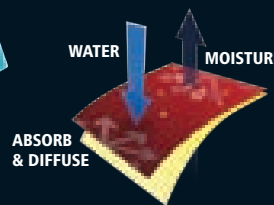
NAVY/WHITE
(5395/WHT)



WHITE/RED
(WHT/1795)



AQUA/GREY
(3125/431)



ABSORB & DIFFUSE

COOL-DRY®
MOISTURE WICKING CONTROL

Breathable
Lightweight

	XS	S	M	L	XL
UK	8	10	12	14	16
EURO	34	36	38	40	42
CASE:	20		PACK: 5		

FABRIC:
100% Polyester, with 140g/m² jacquard mesh, COOL-DRY® performance fabric

FEATURES

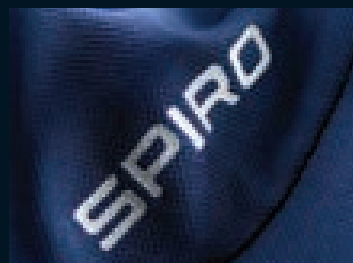
- COOL-DRY® performance fabric with moisture wicking control keeps skin cool & comfortable
- Breathable
- Extremely lightweight
- Contour fit panels
- Quick drying
- Reflecting SPIRO print logo
- Ideal layer garment
- Mens fit available

Decorators access: One layer

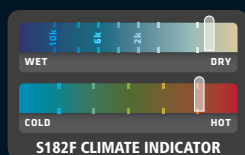
Decoration process: Transfer print or embroidery



Contrasting detail



Reflecting SPIRO print logo



100% Polyester en maille filet Jacquard 140g/m², tissu performant COOL-DRY®, traitement antibactérien et désodorisant, protection contre les UV, antistatique

CARACTÉRISTIQUES

- Tissu technique COOL-DRY® qui régule l'humidité de manière optimale et tient la peau au frais pour plus de confort
- Léger
- Empiècements galbés avec passepoil réfléchissant
- Technologie avancée
- Séchage rapide
- Logo SPIRO imprimé ultra-réfléchissant
- Vêtement idéal en superposition

Points d'accès : Monocouche
Décoration : Transfert ou broderie



100% Polyester COOL-DRY® Gewebe. 140g/m² Jacquardnetz, antibakteriell und geruchshemmend. UV-Schutz, antistatisch

AUSSTATTUNG

- COOL-DRY® Leistungsgewebe. Feuchtigkeitsregulierend, hält kühl
- Leicht
- Körperbetonende Einsätze mit reflektierendem Paspelbesatz
- Anspruchsvolle Technologie
- Schnelltrocknend
- Ultrareflektierendes SPIRO-Logo auf rechter Brustseite
- Ideal als Sportbekleidung - kann als Mittelschicht getragen werden

Veredelungszugang: Nur 1-lagig
Veredelungsmöglichkeiten: Transferdruck oder Stick

MIX & MATCH

CO-ORDINATE YOUR LOOK

1 CO-ORDINATING JACKETS www.spiroactivewear.com



2 S182F COLOUR RANGE www.spiroactivewear.com



3 CO-ORDINATING LEGWEAR www.spiroactivewear.com



Scan QR Code to view the complete range



S250F

WOMENS BODYFIT BASE LAYER SHORTS

FABRIC:

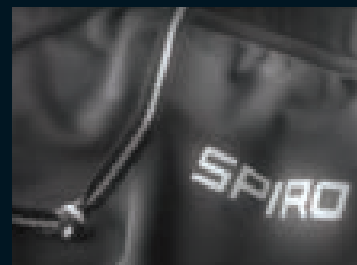
200g/m² 80% Polyamide (Nylon) 20% Elastane

FEATURES

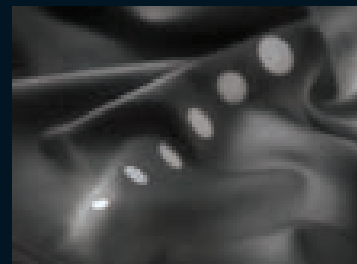
- Quick dry treatment performance fabric with added fast wicking control keeps skin cool & comfortable
- Breathable
- Extremely lightweight
- Flat lock stitch side seams
- Elasticated waist band and drawcord
- Contour panels with contrast stitch
- Micro stretch soft athletic fabric
- Reflective SPIRO print logo
- Inner key pocket
- Ideal layer garment
- Mens fit available

Decorators access: One layer

Decoration process: Transfer print or embroidery



Elasticated waist band and drawcord



Reflective back leg detail

80% Polyamide (Nylon), 20% Elasthanne, 200g/m²

CARACTÉRISTIQUES

- Tissu avec traitement de séchage rapide Quick Dry
- Élimination rapide de l'humidité pour assurer fraîcheur et confort de la peau
- Léger
- Coupe confortable
- Coutures plates latérales
- Ceinture élastiquée avec cordon de serrage
- Empiècements galbés avec coutures contrastées le long des jambes
- Technologie avancée
- Tissu extensible Micro Soft
- Tissu permettant une évacuation rapide de l'humidité du corps
- Logo imprimé SPIRO ultra-réfléchissant sur la cuisse gauche avec 6 points sur le bas arrière de la jambe droite
- Petite poche centrale intérieure arrière
- Vêtement idéal en superposition

Points d'accès : Monocouche

Décoration : Transfert, Broderie

80% Polyamid (Nylon), 20% Elastan, 200g/m²

AUSSTATTUNG

- Schnelltrocknend und feuchtigkeitsregulierend, hält kühl, bequem
- Flatlocknähte an den Seiten
- Elastischer Bund mit Kordelzug
- Sehr leicht
- Körperbetonende Einsätze mit Kontrastnaht am Bein
- Hochentwickelte Technologie
- Extrem weiches, sportliches Gewebe
- Reflektierendes, gedrucktes SPIRO - logo auf linkem Oberschenkel mit 6 Punkten auf der Beinrückseite rechts
- Schlüsselinnentasche hinten

Veredelungszugang: n.v.

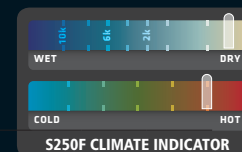
Veredelungsmöglichkeiten: Transferdruck, Stick



Lightweight

BLACK
(BLK)Breathable
Extremely lightweight
Comfort fit

	XS/S	M/L	XL/2XL
UK	8/10	12/14	16/18
EURO	36/38	40/42	44/46
WAIST	22" 56cm/24" 61cm	26" 66cm/28" 71cm	30" 76cm/32" 81cm
CASE:	20	PACK:	5



MIX & MATCH

CO-ORDINATE YOUR LOOK

1 CO-ORDINATING JACKETS

www.spiroactivewear.com



2 CO-ORDINATING TOPS

www.spiroactivewear.com



3 S250F COLOUR RANGE

www.spiroactivewear.com



Scan QR Code to view the complete range



S251F

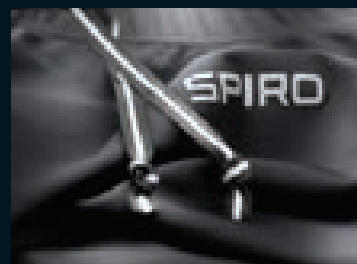
WOMENS BODYFIT BASE LAYER LEGGINGS

FABRIC:
200g/m² 80% Polyamide (Nylon) 20% Elastane

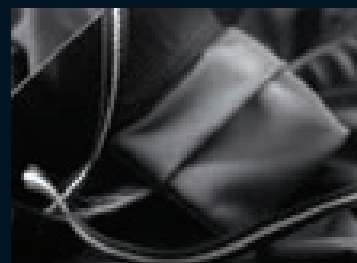
FEATURES

- Athletic soft stretch fabric
- Quick dry treatment performance fabric with fast moisture wicking control keeps skin cool & comfortable
- Breathable
- Extremely lightweight
- Flat lock stitch side seams
- Elasticated waist band and drawcord
- Contour panels with contrast stitching
- Micro stretch soft athletic fabric
- Reflective SPIRO print logo
- Inner key pocket
- Ideal layer garment
- Mens fit available

Decorators access: One layer
Decoration process: Transfer print or embroidery



Elasticated waist band and drawcord



Key pocket inside front

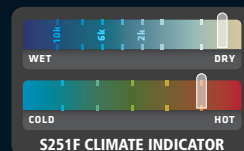


BLACK
(BLK)



Lightweight

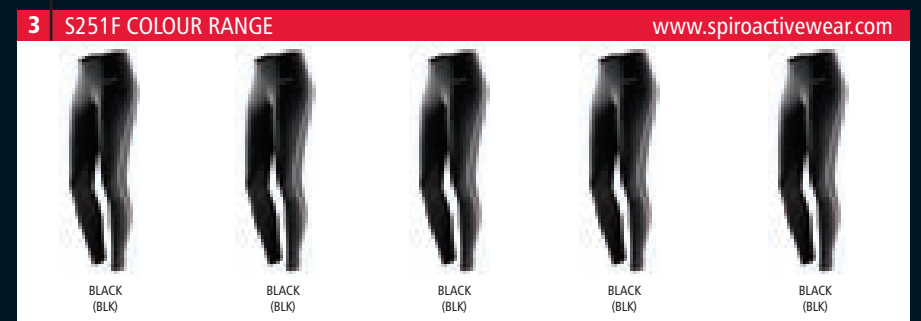
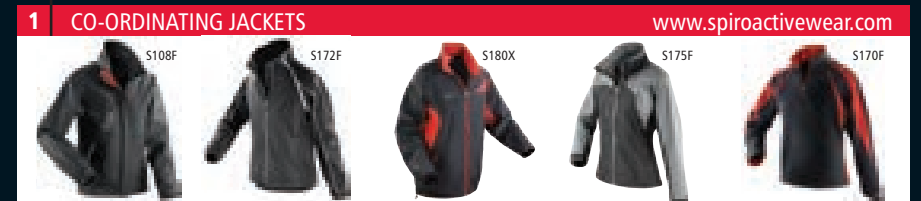
Breathable
Extremely lightweight
Comfort fit



	XS/S	M/L	XL/2XL
UK	8/10	12/14	16/18
EURO	36/38	40/42	44/46
WAIST	22" 56cm/24" 61cm	26" 66cm/28" 71cm	30" 76cm/32" 81cm
CASE:	20	PACK:	5

MIX & MATCH

CO-ORDINATE YOUR LOOK



Scan QR Code to view the complete range



80% Polyamide (Nylon), 20% Elasthanne, 200g/m²

CARACTÉRISTIQUES

- Tissu avec traitement de séchage rapide Quick Dry
- Élimination rapide de l'humidité pour assurer fraîcheur et confort de la peau
- Coupe confortable
- Coutures plates latérales contrastées
- Ceinture élastiquée avec cordon de serrage
- Empiècements galbés avec coutures contrastées
- Technologie avancée
- Tissu extensible Micro Soft
- Tissu permettant une évacuation rapide de l'humidité du corps
- Logo imprimé SPIRO ultra-réfléchissant sur la cuisse gauche et sur l'arrière de la cheville droite
- Petite poche centrale intérieure arrière
- Vêtement idéal en superposition

Points d'accès : Monocouche
Décoration : Transfert, Broderie

80% Polyamid (Nylon), 20% Elastan, 200g/m²

AUSSTATTUNG

- Schnelltrocknend und feuchtigkeitsregulierend, hält kühl
- Flatlocknähte Seitennähte
- Elastischer Bund mit Kordelzug
- Sehr leicht
- Körperbetonte Einsätze mit Kontrastnaht
- Hochentwickelte Technologie
- Extrem weiches, sportliches Gewebe
- Reflektierendes, gedrucktes SPIRO - logo auf linkem Oberschenkel und rechter Wade unten
- Schlüsselinnentasche hinten

Veredelungszugang: n.v.
Veredelungsmöglichkeiten: Transferdruck, Stick

SPIRO BASE

S253F

WOMENS QUICK DRY T-SHIRT

FABRIC:
160g/m² 100% Polyester

FEATURES

- Quick dry performance base layer keeps skin cool & comfortable
- Breathable
- Soft athletic material
- Reflective SPIRO print logo
- Flatlock stitch seams
- Reflective printed inner neck label
- Mens fit available

Decorators access: One layer
Decoration process: Transfer print or embroidery



Reflective printed inner neck label



Reflective SPIRO print logo

Breathable
Quick drying



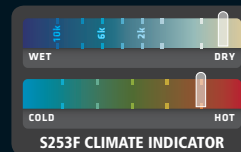
WHITE
(WHT)



BLACK
(BLK)

NAVY
(5395)

LIME GREEN
(382)



	XS	S	M	L	XL
UK	8	10	12	14	16
EURO	34	36	38	40	42
CASE:	25		PACK: 5		

MIX & MATCH

CO-ORDINATE YOUR LOOK



100% Polyester, Interlock 160g/m²

CARACTÉRISTIQUES

- Tissu seconde peau avec traitement de séchage rapide Quick Dry
- Élimination rapide de l'humidité pour assurer fraîcheur et confort de la peau
- Tissu doux Quick Dry conçu pour les performances sportives
- Logo imprimé SPIRO ultra-réfléchissant en bas à droite
- Couture courbe dans le dos
- Coutures couvertes
- Étiquette de cou remplacée par une impression à même le tissu

Points d'accès : Monocouche
Décoration : Transfert, Broderie



100% Polyester, Interlock 160g/m²

AUSSTATTUNG

- Schnelltrocknend, Funktions-Base Layer
- Feuchtigkeitsregulierend- hält kühl
- Schnell trocknend
- Gedrucktes Reflex-SPIRO -Logo auf der unteren rechten Seite
- Halbrunder Rückensaum mit Ziernaht
- Verdeckte Nähte
- Gedrucktes Nakenlabel

Veredelungszugang: n.v.
Veredelungsmöglichkeiten: Transferdruck, Stick

Scan QR Code to view the complete range



S254F

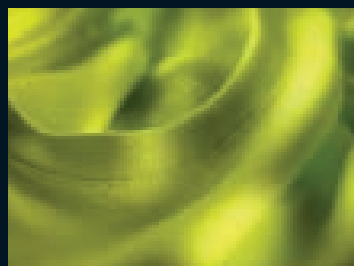
WOMENS QUICK DRY LONG SLEEVE T-SHIRT

FABRIC:
160g/m² 100% Polyester

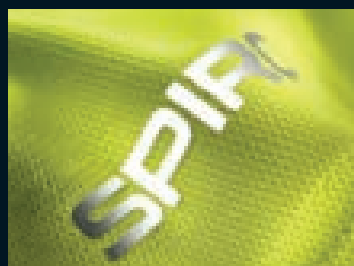
FEATURES

- Quick dry performance base layer keeps skin cool & comfortable
- Breathable
- Soft athletic material
- Reflective SPIRO print logo
- Flatlock stitch seams
- Reflective printed inner neck label
- Mens fit available

Decorators access: One layer
Decoration process: Transfer or embroidery



Self fabric neck



Reflective SPIRO print logo



LIME GREEN
(382)



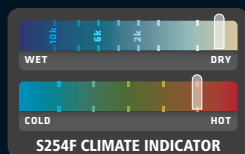
BLACK
(BLK)



NAVY
(5395)



WHITE
(WHT)



Tissu très doux, 100% Polyester, Interlock 145g/m²

CARACTÉRISTIQUES

- Tissu avec traitement de séchage rapide Quick Dry
- Élimination rapide de l'humidité pour assurer fraîcheur et confort de la peau
- Tissu doux conçu pour les performances sportives
- Encolure dans le même tissu
- Étiquette de cou remplacée par une impression réfléchissante à même le tissu
- Logo imprimé SPIRO ultra-réfléchissant en bas à droite
- Couture courbe dans le dos
- Vêtement idéal en superposition

Points d'accès : Monocouche
Décoration : Transfert, Impression directe, Broderie



100% Polyester, Interlock 160g/m²

AUSSTATTUNG

- Schnelltrocknendes Funktions- T-shirt
- Feuchtigkeitsregulierend, - hält kühl
- Sehr weiches Material
- Abgesetzter Kragen
- Reflektierendes, gedrucktes Nackenlabel
- Gedrucktes Reflex- SPIRO -Logo auf der unteren rechten Seite
- Halbbrüder Rückensaum mit Ziernaht
- Ideal als Sportbekleidung -kann als Mittelschicht getragen werden

Veredelungszugang: n.v.
Veredelungsmöglichkeiten: Transfer & Directdruck, Stick

	XS	S	M	L	XL
UK	8	10	12	14	16
EURO	34	36	38	40	42
CASE:	25		PACK: 5		

Breathable
Quick drying

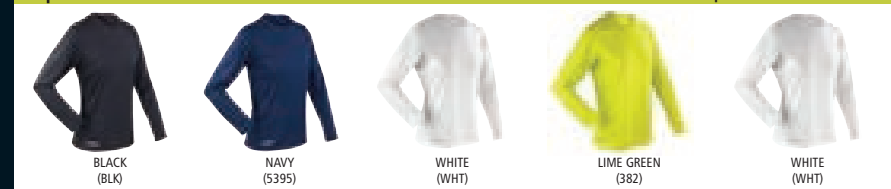
MIX & MATCH

CO-ORDINATE YOUR LOOK

1 CO-ORDINATING JACKETS www.spiroactivewear.com



2 S254F COLOUR RANGE www.spiroactivewear.com



3 CO-ORDINATING LEGWEAR www.spiroactivewear.com



Scan QR Code to view the complete range



SPIRO**S256F****WOMENS FREEDOM SOFT SHELL JACKET****FABRIC:**

WATER REPELLENT, BREATHABLE, WINDPROOF
310g/m² 2 LAYER BONDED FABRIC comprising:

- **Outer-layer:** 100% Polyester

- **Inner-layer:** 100% Polyester microfleece

Side panel & cuff: 92% Polyester, 8% Elastane

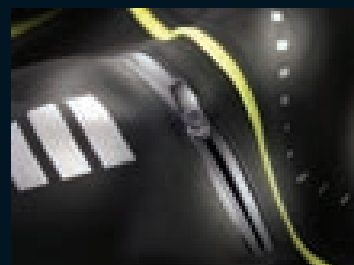
Internal pocket mesh: 100% Polyester

FEATURES

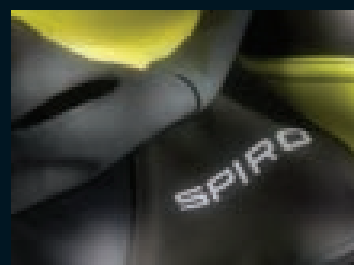
- Contour shaped panels
- Full front zip with inner storm flap
- Stand up collar
- Thumbhole cuff
- Back pocket with self lock waterproof zip
- Reflective print detail
- Longer length back panel
- Media player loop/hole
- Soft athletic stretch fabric
- Comfort fitted style in a compound knitted softshell
- Mens fit available

Decorators access: Open

Decoration process: Embroidery



Back pocket with self lock waterproof zip



Thumbhole cuff



Corps Principal - Tissu Softshell 310g/m² à 2 couches soudées:
- Extérieur : 100% Polyester
- Intérieur : 100% Polyester micro polaire
Empiècements latéraux et poignets : 92% Polyester, 8% Élasthanne
Intérieur poche en maille filet : 100% Polyester

CARACTÉRISTIQUES

- Empiècements galbés respirants
- Fermeture zippée à l'avant avec rabat de protection intérieur
- Col montant
- Poignets avec fente pour le pouce
- Poche dans le dos avec zip autobloquant imperméable et finition imprimée réfléchissante
- Panneau plus long dans le dos
- Taille marquée
- Passage pour les écouteurs
- Existe en modèle pour homme

Points d'accès: Ouvert

Décoration: Broderie



Hauptfarbe vorne und hinten- 310g/m² 2 lagige Softshell Jacke bestehend aus:
- Außen: 100% Polyester
- Innen: 100% Polyester Micro Fleece
Seitliche Einsätze und Bündchen: 92% Polyester, 8% Elasthan
Taschenfutter Innen: 100% Polyester

AUSSTATTUNG

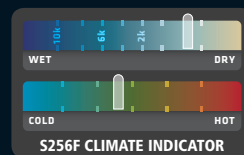
- Belüftungs-Einsätze
- durchgehender Reißverschluss vorne mit Windschutzleiste innen
- Stehkragen
- Daumenlöchern
- Tasche hinten mit wasserdichtem Reißverschluss und reflektierendes, gedrucktes Design
- verlängerter Rücken
- taillert
- Anschlussmöglichkeit von MP-3-Player, Kopfhörer usw
- Auch für Damen erhältlich

Veredelungszugang: n.v

Veredelungszugang: Stick

NEW

Water Repellent
Breathable
Windproof
Lightweight
Quick Dry Finish

NEON LIME/BLACK
(382/BLK)**STRETCH**
2-LAYER SOFT SHELLMAGENTA/BLACK
(221/BLK)AQUA/BLACK
(3125/BLK)

	XS	S	M	L	XL
UK	8	10	12	14	16
EURO	34	36	38	40	42
CASE:	10		PACK: 5		

MIX & MATCH

CO-ORDINATE YOUR LOOK

1 S256F COLOUR RANGE

www.spiroactivewear.com

MAGENTA/BLACK
(221/BLK)AQUA/BLACK
(3125/BLK)NEON LIME/BLACK
(382/BLK)AQUA/BLACK
(3125/BLK)NEON LIME/BLACK
(382/BLK)**2 CO-ORDINATING TOPS**

www.spiroactivewear.com



S253F

S182F

S254F

S186X

S176F

3 CO-ORDINATING LEGWEAR

www.spiroactivewear.com



S251F

S171F

S179F

S251F

S171F

S250F

S184X

S264X

S250F

S174F

S187F

S183X

S183X

S187F

S184X

Scan QR Code to view the complete range



SPIRO**S261F****WOMENS SKORT****FABRIC:**210g/m² 100% Polyester skirt, 95% Cotton 5% Elastane pant**FEATURES**

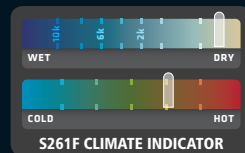
- Integral sport pant
- Flat elastic waistband
- Hem vent
- Waffle weave fabric
- Fast wicking control keeps skin cool & comfortable
- Soft athletic fabric
- Reflective SPIRO print logo
- Junior fit also available

Decorators access: Open**Decoration process:** Transfer Print, Embroidery

Reflective SPIRO print logo



Waffle weave fabric



S261F CLIMATE INDICATOR

Jupe en Polyester Élasthanne gaufré 210g/m² Short en Coton Élasthanne**CARACTÉRISTIQUES**

- Short moulant intégral
- Ceinture plate élastiquée
- Seitenschlitz
- Élimination rapide de l'humidité pour assurer fraîcheur et confort de la peau
- Tissu doux conçu pour les performances sportives
- Logo imprimé SPIRO réfléchissant
- Disponible en taille Junior

Points d'accès : Ouvert**Décoration :** Transfert, broderie210g/m² Außen: Waffel- Polyester Elastan, Innen: Baumwolle- Elastan**AUSSTATTUNG**

- integrierte Sport Pant
- Flacher, elastischer Taillenbund
- Seitenschlitze
- Feuchtigkeitsregulierend- hält kühl
- Sehr weiches, sportliches Gewebe
- Gedrucktes, reflektierendes SPIRO-Logo
- Auch für Kinder erhältlich

Veredelungszugang: n.v**Veredelungszugang:** Transferdruck, Stick**NEW**

Windproof
Quick Drying
Lightweight
Breathable

STRETCH

Lightweight

WHITE
(WHT)BLACK
(BLK)NAVY
(5395)

Integral sport pant

	S	M	L	XL	2XL
UK	10	12	14	16	18
EURO	36	38	40	42	44

CASE: 25

PACK: 5

MIX & MATCH

CO-ORDINATE YOUR LOOK

1 CO-ORDINATING JACKETSwww.spiroactivewear.com

S180X



S180X



S180X



S172F



S262F

2 CO-ORDINATING TOPSwww.spiroactivewear.com

S177F



S177F



S177F



S177F



S176F



S252X



S252X



S177F



S252X



S254F

3 S261F COLOUR RANGEwww.spiroactivewear.comBLACK
(BLK)NAVY
(5395)WHITE
(WHT)BLACK
(BLK)BLACK
(BLK)

Scan QR Code to view the complete range



SPIRO**S262F****WOMENS AIRFLOW SOFT SHELL GILET****FABRIC:****BREATHABLE, WINDPROOF**310g/m² 2 LAYER BONDED FABRIC comprising:

- Outer-layer: 100% Polyester
- Inner-layer: 100% Polyester fleece
- Mesh Back Panel: 92% Polyester, 8% Elastane

FEATURES

- Breathable contour back mesh panel
- Reflective piping and print detail
- Full front zip with inner storm flap
- Stand up collar
- Longer shaped back panel
- Bound armholes
- Elasticised hem with rubber gripper
- Soft athletic stretch fabric
- Ideal layer garment
- Comfort fit
- Pocket free to aid streamline contour shape
- Mens fit available

Decorators access: Open**Decoration process:** EmbroideryTissu Softshell 310g/m² à 2 couches soudées:

- Couche extérieure: 100% Polyester
- Couche intérieure: 100% Polaire Polyester
- Empiècement dos en maille filet: 92% Polyester, 8% Élasthanne

CARACTÉRISTIQUES

- Empiècements galbés respirants en maille filet dans le dos
- Passepoil réfléchissant autour de l'empiecement dans le dos
- Fermeture zippée à l'avant avec rabat de protection intérieur
- Col montant
- Panneau plus long dans le dos
- Emmanchures élastiquées
- Finition imprimée réfléchissante à l'avant
- Ourlet élastiqué
- Taille marquée
- Tissu extensible doux conçu pour les performances sportives
- Vêtement idéal en superposition
- Coupe confortable
- Sans poche pour un meilleur profil aérodynamique
- Existe en modèle pour homme

Points d'accès: Ouvret**Décoration:** Broderie310g/m² 2 lagiges Verbund Material bestehend aus:

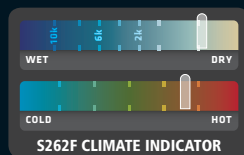
- Außen: 100% Polyester
- Innen: 100% Polyester (fleece)
- Netzzeinsätze am Rücken: 92% Polyester, 8% Elastan

AUSSTATTUNG

- Belüftungs-Einsätze hinten mit Netzfutter
- Reflektierende Paspeln an den Einsätzen hinten
- Durchgehender Reißverschluss vorne mit Windschutzleiste innen
- Stehkragen
- Verlängerter Rücken
- Elastischer Armausschnitt
- Reflektierendes Druck Design vorne
- Elastischer Saum
- Taillert
- Weiches, sportliches, dehnfähiges Gewebe
- Ideal zum Kombinieren
- Bequemer Passform
- Ohne Tasche für eine verbesserte, schnittige Kontur
- Auch für Herren erhältlich

Veredelungszugang: n.v**Veredelungszugang:** Stick**NEW**NEON GREEN/BLACK
(7487/BLK)Windproof
Breathable
Quick Dry Finish
Ideal Layer Garment

Breathable contour back mesh panel

BLACK
(BLK)**STRETCH**
2-LAYER SOFT SHELL

	XS	S	M	L	XL
UK	8	10	12	14	16
EURO	34	36	38	40	42

CASE: 10 PACK: 5

MIX & MATCH

CO-ORDINATE YOUR LOOK

1 S262F COLOUR RANGE www.spiroactivewear.comNEON GREEN/BLACK
(7487/BLK)BLACK
(BLK)NEON GREEN/BLACK
(7487/BLK)BLACK
(BLK)NEON GREEN/BLACK
(7487/BLK)**2 CO-ORDINATING TOPS** www.spiroactivewear.com

S254F



S254F



S252X



S252X



S178X

3 CO-ORDINATING LEGWEAR www.spiroactivewear.com

S251F



S171F



S179F



S251F



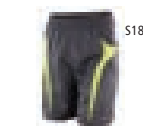
S171F



S250F



S184X



S184X



S250F



S174F



S264X



S183X



S183X



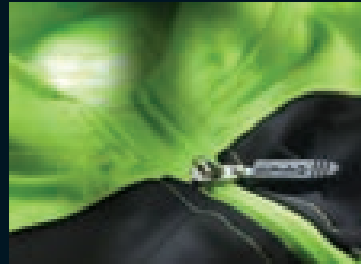
S187F



S184X

Scan QR Code to view the complete range





BIKEWEAR

COLLECTION

S185X UNISEX CROSSLITE TRAIL & TRACK JACKET.....	94
S187M MENS PADDED BIKEWEAR SHORTS.....	98
S187F WOMENS PADDED BIKEWEAR SHORTS.....	106
S188M MENS BIKEWEAR SHORT SLEEVE PERFORMANCE TOP.....	90
S188F WOMENS BIKEWEAR SHORT SLEEVE PERFORMANCE TOP.....	102

NEW FOR 2014

S255M MENS BIKEWEAR LONG SLEEVE PERFORMANCE TOP.....	<i>NEW</i> 92
S255F WOMENS BIKEWEAR LONG SLEEVE PERFORMANCE TOP.....	<i>NEW</i> 104
S257X UNISEX BIKEWEAR SHORT GLOVE.....	<i>NEW</i> 108
S258X UNISEX BIKEWEAR LONG GLOVE.....	<i>NEW</i> 110
S259X UNISEX BIKEWEAR CROSSLITE GILET.....	<i>NEW</i> 96
S264X UNISEX BIKEWEAR OFF ROAD SHORTS.....	<i>NEW</i> 100

www.spirobikewear.com

Scan QR Code to view the complete range



S188M

MENS BIKEWEAR SHORT SLEEVE PERFORMANCE TOP

FABRIC:

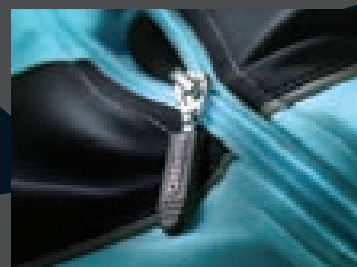
COOL-DRY® yarns, 100% Polyester interlock 170g/m²

FEATURES

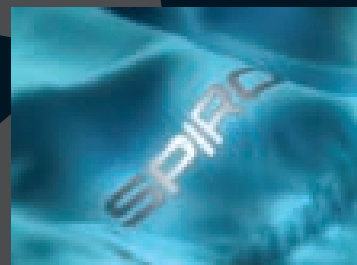
- Soft athletic COOL-DRY® performance fabric
- Breathable contour fit panels
- Extremely lightweight
- Fast wicking control keeps skin cool & comfortable
- Reflective piping on body fit contours
- Full front zip opening
- Zip closing key pocket to outside centered back pocket
- Reflective print design central back position for enhanced visibility
- UV Protection
- Ideal layer garment
- Womens fit available

Decorators access: One layer

Decoration process: Transfer print or embroidery



Full front zip opening



Reflective SPIRO logo on central back pocket

AQUA/BLACK
(3125/BLK)NEW
COLOUR

Lightweight

GREEN/BLACK
(7487C/BLK)BLACK/WHITE
(BLK/WHT)

Breathable contour fit panels
Extremely lightweight
Comfort fit

	S	M	L	XL	2XL
UK	37	40	43	46	49
EURO	46	50	52	56	58
CASE:	10		PACK: 5		

MIX & MATCH

CO-ORDINATE YOUR LOOK

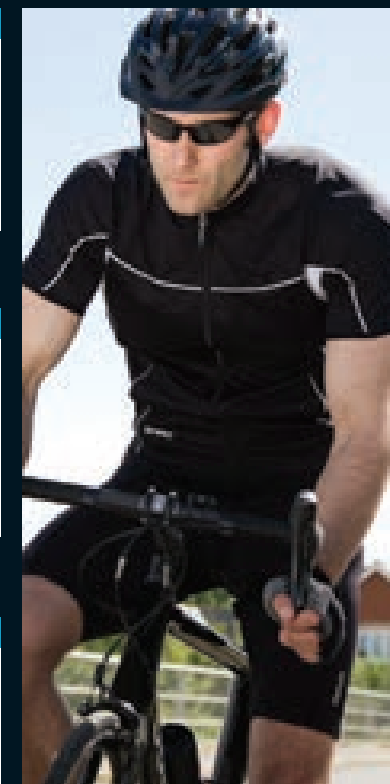
1 CO-ORDINATING JACKETS



2 S188M COLOUR RANGE



3 CO-ORDINATING LEGWEAR



Fils COOL-DRY®, 100% Polyester, Interlock 170g/m²

CARACTÉRISTIQUES

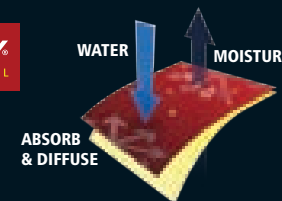
- Tissu performant COOL-DRY®
- Pièces galbées respirantes
- Léger
- Élimination rapide de l'humidité pour assurer fraîcheur et confort de la peau
- Pièces galbées avec coutures contrastées
- Fermeture zippée sur toute la hauteur
- 3 poches à l'arrière avec une petite poche centrale zippée
- Imprimé réfléchissant au centre du dos assurant une meilleure visibilité
- Protection contre les UV
- Vêtement idéal en superposition

Points d'accès : Monocouche
Décoration : Transfert, Broderie

COOL-DRY® Gewebe, 100% Polyester, Interlock 170g/m²

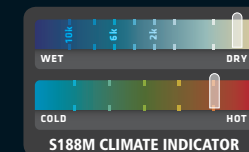
AUSSTATTUNG

- Weiches, sportliches COOL-DRY® Material
- Seitliche Belüftungs-Einsätze
- Sehr leicht
- Feuchtigkeitsregulierend, hält kühl, bequem zu tragen
- Seiteneinsätze in Kontrastfarbe
- Durchgehender Reißverschluss vorne
- 3 Taschen hinten mit einer kleiner Reißverschluss tasche mitten
- Reflektierendes, gedrucktes Design in der Mitte am Rücken für eine stärkere Sichtbarkeit
- UV-Schutz
- Ideal zu kombinieren

Veredelungszugang: n.v.
Veredelungsmöglichkeiten: Transferdruck, StickCOOL-DRY®
MOISTURE WICKING CONTROLABSORB
& DIFFUSE

WATER

MOISTURE



S188M CLIMATE INDICATOR

Scan QR Code to view the complete range



S255M

MENS BIKEWEAR LONG SLEEVE PERFORMANCE TOP

FABRIC:

170g/m² 100% Polyester, COOL DRY® yarns

FEATURES

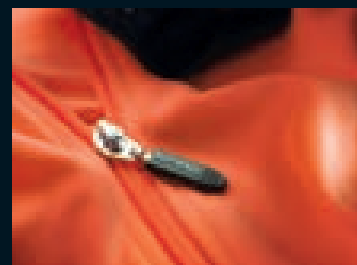
- Flat lock stitch side seams
- Breathable contour fit panels
- Reflective piping on contour panels
- Soft athletic COOL-DRY® performance fabric
- Full front zip opening
- Zip closing key pocket to outside centre back
- Reflective print design central back
- Longer back panel
- Fast wicking control keeps skin cool & comfortable
- Ideal layer garment
- Comfort fit
- Womens fit available

Decorators access: Open

Decoration process: Transfer print or embroidery



Reflective print design central back



Full front zip opening

100% Polyester 170g/m², Fils COOL DRY®

CARACTÉRISTIQUES

- Coutures plates latérales
- Empiècements galbés respirants
- Passepoil réfléchissant sur les empiècements galbés
- Tissu doux COOL-DRY® conçu pour les performances sportives
- Fermeture zippée à l'avant
- Poche centrale zippée à l'extérieur dans le dos
- Motif réfléchissant au centre du dos
- Panneau plus long dans le dos
- Élimination rapide de l'humidité pour assurer fraîcheur et confort de la peau
- Vêtement idéal en superposition
- Coupe confortable
- Modèle femme également disponible

Points d'accès: Ouvert

Décoration: Transfert, Broderie

170g/m² 100% Polyester, COOL DRY® Gewebe

AUSSTATTUNG

- Flatlocknähte an den Seiten
- Seitliche Belüftungs-Einsätze
- Reflexpaspel an den Einsätzen
- Sehr angenehmes, sportliches COOL-DRY® Gewebe
- Durchgehender Reißverschluss vorne
- 3 Taschen hinten mit einer kleiner Reißverschluss tasche in der Mitte
- Reflektierendes, gedrucktes Design in der Mitte am Rücken für eine stärkere Sichtbarkeit
- Verlängerter Rücken
- Feuchtigkeitsregulierend- hält kühl
- Ideal als Mittelschicht
- Sehr gute Passform, angenehmer Tragekomfort
- Auch für Damen erhältlich

Veredelungszugang: n.v.

Veredelungsmöglichkeiten: Transferdruck, Stick

NEON ORANGE/BLACK
(021/BLK)

Lightweight

BLACK/WHITE
(BLK/WHT)AQUA/BLACK
(3125/BLK)

	S	M	L	XL	2XL
UK	37	40	43	46	49
EURO	46	50	52	56	58

CASE: 10 PACK: 5

MIX & MATCH

CO-ORDINATE YOUR LOOK

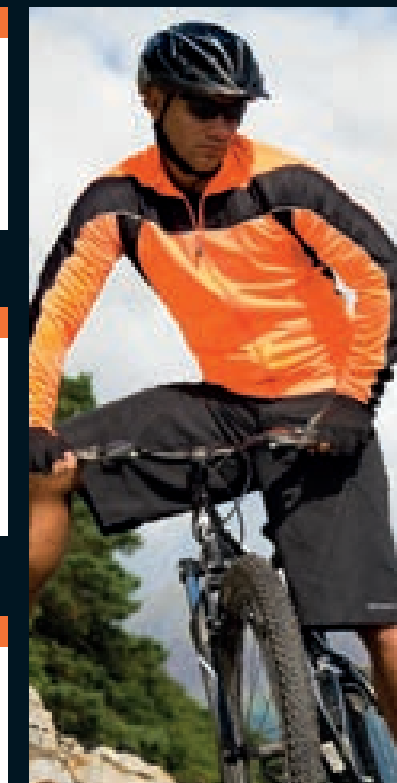
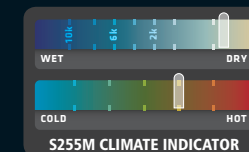
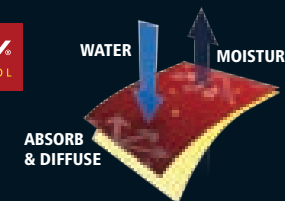
1 CO-ORDINATING TOPS



2 S255M COLOUR RANGE



3 CO-ORDINATING LEGWEAR

COOL-DRY®
MOISTURE WICKING CONTROL

Scan QR Code to view the complete range



S185X

UNISEX CROSSLITE TRAIL & TRACK JACKET

FABRIC:

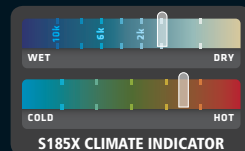
100% Polyester pongee 300T with PU transparent coating

FEATURES

- Water repellent (waterproof 5000mm fabric)
- Breathable: 2000g
- Windproof
- Mesh back panel
- Shockcord adjuster
- Tear release cuff
- Full length front zip with inner storm flap
- Foldaway into back pocket, with belt
- Lightweight comfort fit with maximum protection
- Quick drying
- Keeps skin cool & comfortable
- 2 zip closing side pockets
- Zip closing back pocket
- Reflecting SPIRO print logo
- Wind protect longer back panel
- Unisex fit

Decorators access: One layer

Decoration process: Direct print, transfer print or embroidery



100% Polyester Pongee 300T enduit PU transparent

CARACTÉRISTIQUES

- Veste de cyclisme idéale
- Coupe confortable et légère assurant une protection maximum
- Séchage rapide
- Tirettes SPIRO pour faciliter l'ouverture
- Maintient la fraîcheur de la peau et procure un confort maximal
- Se plie et se range dans la poche de la ceinture

Points d'accès : Monocouche

Décoration : Transfert numérique et impression ou broderie



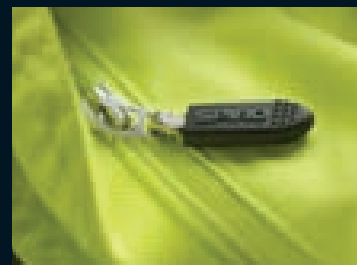
100% Polyester Pongé 300T mit einer durchsichtiger PU Beschichtung

AUSSTATTUNG

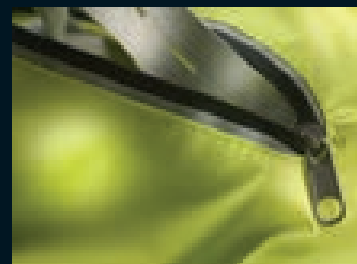
- Die äußerste Jacke für den Radsport
- Sehr leichtes Material für hohen Tragekomfort
- Schnelltrocknend
- Leicht zu öffnende SPIRO Reißverschlusschieber
- Die Haut bleibt kühl und komfortable
- Läßt sich in einer Gürteltasche verpacken

Veredelungszugang: Nur 1-lagig

Veredelungsmöglichkeiten: Druck oder Stick, Digital Transferdruck



Full length front zip with inner storm flap



Foldaway into back pocket, with belt

NEON LIME
(382)

Lightweight

Water repellent
Breathable: 2000g
Windproof
Extremely lightweight

	S	M	L	XL	2XL
UK	38	41	44	47	50
EURO	48	50	54	56	60
	CASE: 10		PACK: 5		

MIX & MATCH

CO-ORDINATE YOUR LOOK

1 | S185X COLOUR RANGE

www.spiroactivewear.com

NEON LIME
(382)NEON LIME
(382)NEON LIME
(382)NEON LIME
(382)

2 | CO-ORDINATING TOPS

www.spiroactivewear.com



S252X



S188M&F



S255M&F



S186X

3 | CO-ORDINATING LEGWEAR

www.spiroactivewear.com



S251M&F



S251M&F



S171M&F



S179M&F



S174M&F



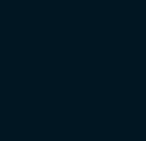
S264X



S187M&F



S184X



S183X

Scan QR Code to view the complete range



S259X

UNISEX BIKEWEAR CROSSLITE GILET

FABRIC:

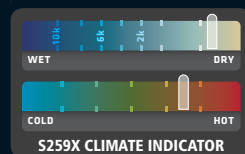
100% Polyester

FEATURES

- Full front zip opening
- Stand up collar
- Longer back panel
- Ideal layer garment
- Comfort fit
- Quick dry
- Longer fit aids cycling position contour
- Reflective prints for enhanced visibility
- Pocket free
- Unisex fit

Decorators access: Open

Decoration process: Print, transfer print or embroidery



100% Polyester

CARACTÉRISTIQUES

- Fermeture zippée à l'avant
- Col montant
- Panneau plus long dans le dos
- Vêtement idéal en superposition
- Coupe confortable
- Séchage rapide
- Coupe allongée couvrante pour le cycliste
- Impressions réfléchissantes pour une meilleure visibilité
- Sans poche
- Coupe unisexe

Points d'accès: Ouvert

Décoration: Transfert numérique et impression ou broderie



100% Polyester

AUSSTATTUNG

- Reißverschluss
- Stehkragen
- Verlängerter Rücken
- Ideal zum Kombinieren
- Bequeme Passform
- Schnell trocknend
- Verlängerter Rücken für mehr Komfort
- Reflektionsstreifen hinten für bessere Sichtbarkeit
- Ohne Taschen
- Unisex Schnitt

Veredelungszugang: n.v.

Veredelungsmöglichkeiten: Druck oder Stick, Digital Transferdruck

NEW

NEON LIME
(382)

Lightweight

Windproof
Breathable
Extremely lightweight

	XS	S	M	L	XL	2XL
UK	33	38	41	44	47	50
EURO	43	48	50	54	56	60
	CASE: 20		PACK: 5			

MIX & MATCH

CO-ORDINATE YOUR LOOK

1 S259X COLOUR RANGE

www.spiroactivewear.com

NEON LIME
(382)NEON LIME
(382)NEON LIME
(382)NEON LIME
(382)

2 CO-ORDINATING TOPS

www.spiroactivewear.com



S255M



S188M&F



S255M&F



S252X

3 CO-ORDINATING LEGWEAR

www.spiroactivewear.com



S251M&F



S251M&F



S171M&F



S179M&F



S187M&F



S264X



S187M&F



S183X

Scan QR Code to view the complete range



S187M

MENS PADDED BIKEWEAR SHORTS

FABRIC:
COOL-DRY® yarns, 200g/m² 80% Polyamide (Nylon) 20% Elastane

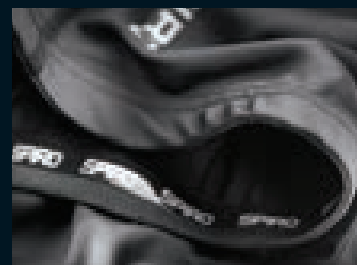
FEATURES

- Soft athletic COOL-DRY® quick drying performance fabric
- Fast wicking control keeps skin cool & comfortable
- Breathable & extremely lightweight
- Anatomically shaped, contour fit panels
- High waisted with elasticated waist band and internal key pocket
- Antibacterial fabric covered dense silicone insert pad
- Silicone leg grip
- 4-way stretch for total freedom of movement
- Reflective SPIRO logo bottom left side leg
- Womens fit available

Decorators access: One layer
Decoration process: Transfer print or embroidery



Internal key pocket



Silicone leg grip



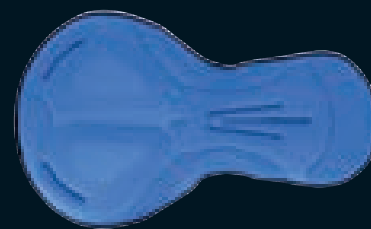
Lightweight



BLACK
(BLK)



Breathable
Micro stretch soft fabric
Extremely lightweight
Comfort fit
Interface padding



Antibacterial double layer fabric pad for maximum moisture transfer & comfort

	S	M	L	XL	2XL
UK	32	34	36	38	40
EURO	81	86	91	96	101
CASE:	10		PACK: 5		

MIX & MATCH

CO-ORDINATE YOUR LOOK

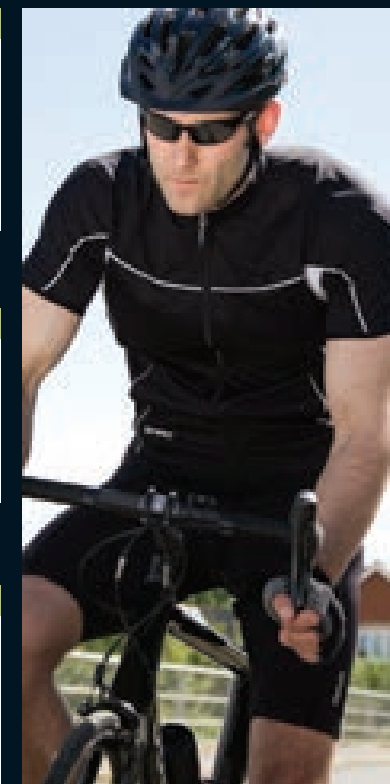
1 CO-ORDINATING JACKETS



2 CO-ORDINATING TOPS



3 S187M COLOUR RANGE



COOL-DRY® traitement, 80% Polyamide (Nylon), 20% Élasthanne, 200g/m²

CARACTÉRISTIQUES

- Tissu doux couçu pour les performances sportives
- Élimination rapide de l'humidité pour assurer fraîcheur et confort de la peau
- Respirante et très léger
- Coupe anatomique, empiècements galbés
- Taille haute avec une bande élastique et petite poche centrale intérieure avec rabat
- Rembourrage double couche anti-bactérien
- Finition bas de cuisse avec un joint antiglisse siliconé
- Extensible 4 directions pour plus d'aisance
- Logo imprimé SPIRO ultra-réfléchissant sur le bas avant de la jambe gauche

Points d'accès : Une seule épaisseur
Décoration : Transfert, Broderie

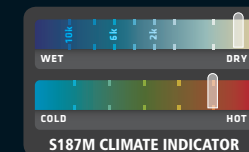
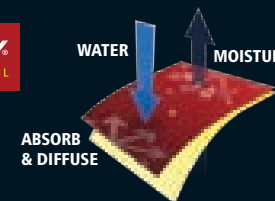


COOL-DRY® Behandlung, 80% Polyamid (Nylon), 20% Elastan, 200g/m²

AUSSTATTUNG

- Sehr weiches, sportliches Gewebe
- Feuchtigkeitsregulierend, hält kühl
- Atmungsaktiv und sehr leicht
- Anatomisch geformt, Seiteneinsätze
- Hoher Taille mit elastischem Bund und Schlüsseltasche mit Patte innen
- Antibakterielles, doppelschichtiges Stoffpolster
- Antirutsch Gummi aus Silikon am Bein
- 4 Wege Stretch für viel Bewegungsfreiheit
- Reflektierendes, gedrucktes SPIRO- Logo auf linkem Bein

Veredelungszugang: n.v.
Veredelungsmöglichkeiten: Transferdruck, Stick



Scan QR Code to view the complete range



S264X

UNISEX BIKEWEAR OFF ROAD SHORTS

FABRIC:

Outer main fabric: 100% Nylon Taslan

Upper panel: 220g/m² 92% Polyester, 8% ElastaneLower panel/ Inner short: 200g/m² 90% Polyester, 10% ElastaneInside waistband: 145g/m² 100% Polyester

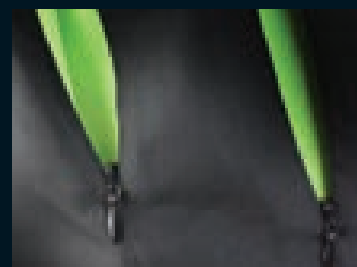
FEATURES

Outer Short:

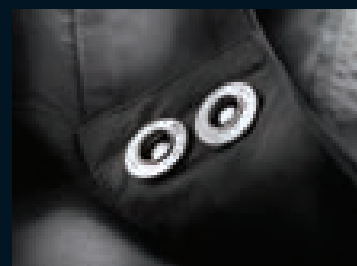
- Quick dry fabric
- 3 contrast mesh zipped air vents in front
- Reflective SPIRO logo on front leg panel
- Reflective back leg detail
- Elastane under panelling for comfort and stretch
- Front fly zipper with 2 popper waist band fastening
- 2 front pockets
- Shaped leg panelling
- Tear and release
- Increased airflow from zip air vents
- Can be worn separately or as a set with stud/loop connectors
- Unisex fit

Decorators access: Open

Decoration process: Embroidery or print



3 contrast mesh zipped air vents in front



Front fly zipper with 2 popper waist band fastening



Tissu principal extérieur: 100% Nylon Taslan

Empiècement supérieur: 92% Polyester 8% Élasthanne 220g/m²Empiècement inférieur/Short intérieur: 90% Polyester 10% Élasthanne 200g/m²Ceinture interne: 100% Polyester 145g/m²

CARACTÉRISTIQUES

Short Extérieur:

- Tissu séchage rapide
- 3 ouvertures d'aération zippées contrastées en maille filet à l'avant
- Logo réfléchissant SPIRO sur la jambe droite
- Élasthanne sous les empiècements pour le confort et l'élasticité
- Bragette avant zippée avec deux boutons-pression pour fermer la ceinture
- 2 poches avant
- Empiècement des jambes épousant les contours du corps
- Taille ajustable par velcro
- Ouvertures d'aération zippées contrastées en maille filet sur les jambes
- Peut être porté séparément ou faire partie d'un ensemble
- Coupe unisex

Points d'accès: Ouvert

Décoration: Broderie – Print



Obermaterial: 100% Nylon Taslan

Einsätze: 92% Polyester 8% Elastan 220g/m²Innenhose: 90% Polyester 10% Elastan, 200g/m²Bund: 100% Polyester 145g/m²

AUSSTATTUNG

Hose:

- Material mit schnell trocknenden Eigenschaften
- Kontrastfarbene Mesh-Ventilationseinsätze mit Reißverschluss
- Reflektierendes, gedrucktes SPIRO-Logo auf rechten Bein
- Einsätze aus Elastan für angenehmen Tragekomfort und Elastizität
- Hosenbund mit 2 Druckknöpfen vorne
- 2 Tasche auf der Vorderseite
- Ergonomisch geformte Einsätze am Bein
- Verstellbarer Bund mit Knopfverschluss
- Kann separat oder zusammen getragen werden Druckknöpfe am Bund/ Loop Anschlüsse
- Elastischer Taillenbund mit SPIRO Logo an Innenhose.
- Unisex Schnitt

Veredelungszugang: n.v

Veredelungsmöglichkeiten: Stick – Druck

Scan QR Code to view the complete range

BLACK/NEON LIME
(BLK/7487)

Reflective back leg detail

Windproof
COOL DRY® yarns

	XS	S	M	L	XL	2XL	3XL
UK	30	32	34	36	38	40	42
EURO	76	81	86	91	97	102	107
	CASE: 10		PACK: 5				

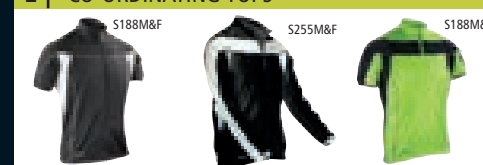
MIX & MATCH

CO-ORDINATE YOUR LOOK

1 CO-ORDINATING JACKETS



2 CO-ORDINATING TOPS



3 S264X COLOUR RANGE



FEATURES

Inner Short:

- SPIRO logo knitted jacquard elasticised waist band
- Cool Dry breathable inner pad for comfort with silicone inner layer
- Elasticised leg for draught protection
- Soft athletic COOL DRY® performance fabric



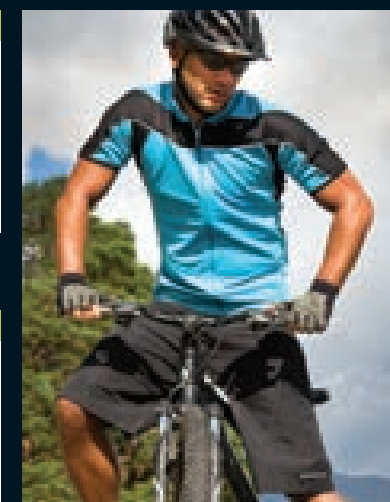
Short Intérieur:

- Bande élastiquée à la taille en tricot Jacquard avec logo Spiro
- Protection intérieure respirante séchage rapide (Cool Dry) avec une couche interne en Silicone pour le confort
- Jambes élastiquées pour protéger des courants d'air

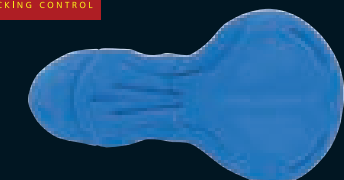


Innenhose:

- Elastischer Taillenbund mit SPIRO Logo aus Jacquard Strick
- Cool Dry, atmungsaktives Sitzpolster für Komfort mit hochwertiger Silikoneinlage
- Das anpassbare, elastische Material an den Oberschenkeln schützt vor Zugluft



Inner short



Cool Dry breathable inner pad for comfort with silicone inner layer

S188F

WOMENS BIKEWEAR SHORT SLEEVE PERFORMANCE TOP

FABRIC:

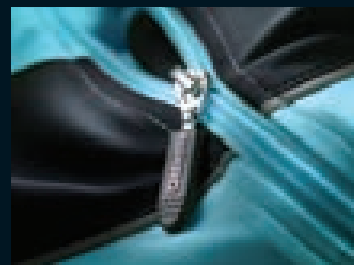
COOL-DRY® yarns, 100% Polyester interlock 170g/m²

FEATURES

- Soft athletic COOL-DRY® performance fabric
- Breathable contour fit panels
- Extremely lightweight
- Fast wicking control keeps skin cool & comfortable
- Reflective piping on body fit contours
- Full front zip opening
- Zip closing key pocket to outside centered back pocket
- Reflective print design central back position for enhanced visibility
- UV Protection
- Ideal layer garment
- Mens fit available

Decorators access: One layer

Decoration process: Transfer print or embroidery



Full front zip opening



Reflective SPIRO logo on central back pocket



Fils COOL-DRY®, 100% Polyester, Interlock 170g/m²

CARACTÉRISTIQUES

- Tissu performant COOL-DRY®
- Empiècements galbés respirants
- Léger
- Élimination rapide de l'humidité pour assurer fraîcheur et confort de la peau
- Empiècements galbés avec coutures contrastées
- Fermeture zippée sur toute la hauteur
- 3 poches à l'arrière avec une petite poche centrale zippée
- Imprimé réfléchissant au centre du dos assurant une meilleure visibilité
- Protection contre les UV
- Vêtement idéal en superposition

Points d'accès : Monocouche

Décoration : Transfert, Broderie



COOL-DRY® Gewebe, 100% Polyester, Interlock 170g/m²

AUSSTATTUNG

- Weiches, sportliches COOL-DRY® Material
- Seitliche Belüftungs-Einsätze
- Sehr leicht
- Feuchtigkeitsregulierend, hält kühl, bequem zu tragen
- Seiteneinsätze in Kontrastfarbe
- Durchgehender Reißverschluss vorne
- 3 Taschen hinten mit einer kleiner Reißverschluss tasche mitten
- Reflektierendes, gedrucktes Design in der Mitte am Rücken für eine stärkere Sichtbarkeit
- UV-Schutz
- Ideal zu kombinieren

Veredelungszugang: n.v.

Veredelungsmöglichkeiten: Transferdruck, Stick

NEW
COLOUR

Lightweight

AQUA/BLACK
(3125/BLK)GREEN/BLACK
(7487C/BLK)BLACK/WHITE
(BLK/WHT)

Breathable contour fit panels
Extremely lightweight
Comfort fit

	XS	S	M	L	XL
UK	8	10	12	14	16
EURO	34	36	38	40	42
CASE:	10		PACK: 5		

MIX & MATCH

CO-ORDINATE YOUR LOOK

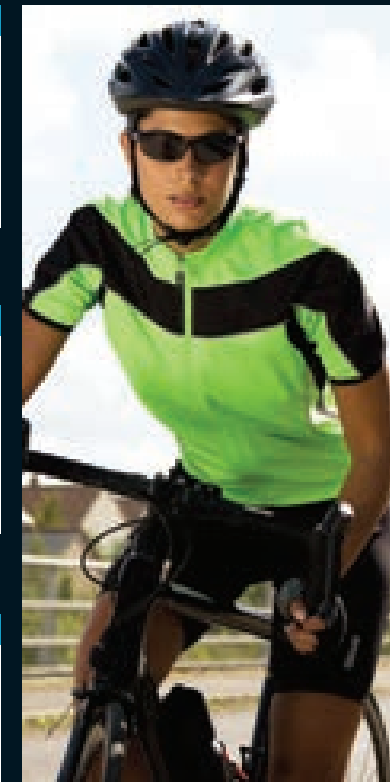
1 CO-ORDINATING JACKETS



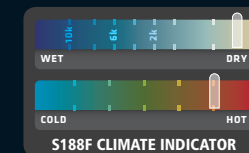
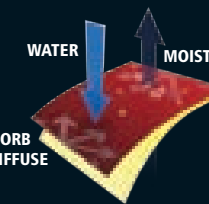
2 S188F COLOUR RANGE



3 CO-ORDINATING LEGWEAR

COOL-DRY®
MOISTURE WICKING CONTROL

WATER ↓ MOISTURE ↑

ABSORB
& DIFFUSE

Scan QR Code to view the complete range



S255F

WOMENS BIKEWEAR LONG SLEEVE PERFORMANCE TOP

FABRIC:

170g/m² 100% Polyester, COOL DRY® yarns

FEATURES

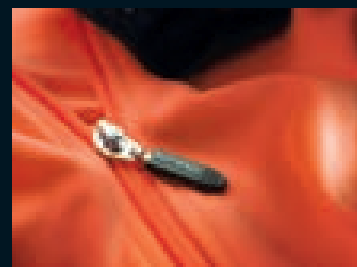
- Flat lock stitch side seams
- Breathable contour fit panels
- Reflective piping on contour panels
- Soft athletic COOL-DRY® performance fabric
- Full front zip opening
- Shaped waist
- Zip closing key pocket to outside centre back
- Reflective print design central back
- Longer back panel
- Fast wicking control keeps skin cool & comfortable
- Ideal layer garment
- Comfort fit
- Mens sizes available

Decorators access: Open

Decoration process: Transfer print or embroidery



Reflective print design central back



Full front zip opening

100% Polyester 170g/m², Fils COOL DRY®

CARACTÉRISTIQUES

- Coutures plates latérales
- Empiècements galbés respirants
- Passepoil réfléchissant sur les empiècements galbés
- Tissu doux COOL-DRY® conçu pour les performances sportives
- Fermeture zippée à l'avant
- Poche centrale zippée à l'extérieur dans le dos
- Motif réfléchissant au centre du dos
- Panneau plus long dans le dos
- Élimination rapide de l'humidité pour assurer fraîcheur et confort de la peau
- Vêtement idéal en superposition
- Coupe confortable
- Modèle homme également disponible

Points d'accès: Ouvert

Décoration: Transfert, Broderie

170g/m² 100% Polyester, COOL DRY® Gewebe

AUSSTATTUNG

- Flatlocknähte an den Seiten
- Seitliche Belüftungs-Einsätze
- Reflexpaspel an den Einsätzen
- Sehr angenehmes, sportliches COOL-DRY® Gewebe
- Durchgehender Reißverschluss vorne
- 3 Taschen hinten mit einer kleiner Reißverschluss tasche in der Mitte
- Reflektierendes, gedrucktes Design in der Mitte am Rücken für eine stärkere Sichtbarkeit
- Verlängerter Rücken
- Feuchtigkeitsregulierend- hält kühl
- Ideal als Mittelschicht
- Sehr gute Passform, angenehmer Tragekomfort
- Auch für Damen erhältlich

Veredelungszugang: n.v.

Veredelungsmöglichkeiten: Transferdruck, Stick

NEON ORANGE/BLACK
(021/BLK)

Lightweight

BLACK/WHITE
(BLK/WHT)AQUA/BLACK
(3125/BLK)Windproof
Breathable
UV Protection
Lightweight

	XS	S	M	L	XL
UK	8	10	12	14	16
EURO	34	36	38	40	42
	CASE: 10		PACK: 5		

MIX & MATCH

CO-ORDINATE YOUR LOOK

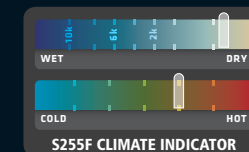
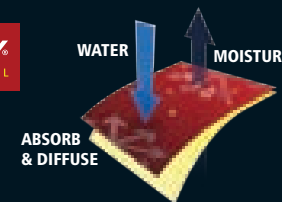
1 CO-ORDINATING TOPS



2 S255F COLOUR RANGE



3 CO-ORDINATING LEGWEAR

COOL-DRY®
MOISTURE WICKING CONTROL

Scan QR Code to view the complete range



S187F

WOMENS PADDED BIKEWEAR SHORTS

FABRIC:
COOL-DRY® yarns, 200g/m² 80% Polyamide (Nylon) 20% Elastane

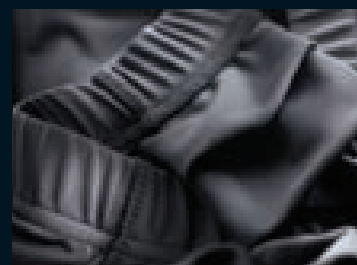
FEATURES

- Soft athletic COOL-DRY® quick drying performance fabric
- Fast wicking control keeps skin cool & comfortable
- Breathable & extremely lightweight
- Anatomically shaped, contour fit panels
- High waisted with elasticated waist band and internal key pocket
- Antibacterial fabric covered dense silicone insert pad
- Silicone leg grip
- 4-way stretch for total freedom of movement
- Reflective SPIRO logo bottom left side leg
- Mens fit available

Decorators access: One layer
Decoration process: Transfer print or embroidery



Silicone leg grip



Internal key pocket

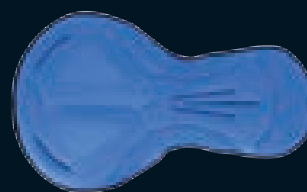


Lightweight



Breathable
Micro stretch soft fabric
Extremely lightweight
Comfort fit
Interface padding

BLACK
(BLK)



Antibacterial double layer fabric pad for maximum moisture transfer & comfort

	XS	S	M	L	XL
UK	8	10	12	14	16
EURO	34	36	38	40	42
CASE:	10		PACK: 5		

MIX & MATCH

CO-ORDINATE YOUR LOOK

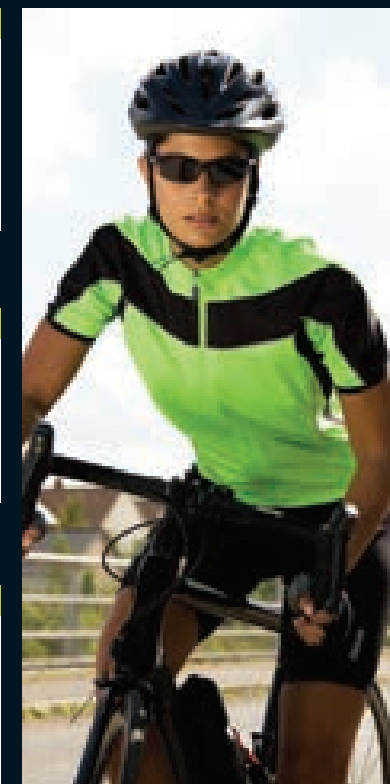
1 CO-ORDINATING JACKETS



2 CO-ORDINATING TOPS



3 S187F COLOUR RANGE



COOL-DRY® traitement, 80% Polyamide (Nylon), 20% Élasthanne, 200g/m²

CARACTÉRISTIQUES

- Tissu doux couçu pour les performances sportives
- Élimination rapide de l'humidité pour assurer fraîcheur et confort de la peau
- Respirante et très léger
- Coupe anatomique, empiècements galbés
- Taille haute avec une bande élastique et petite poche centrale intérieure avec rabat
- Rembourrage double couche anti-bactérien
- Finition bas de cuisse avec un joint antiglisse siliconé
- Extensible 4 directions pour plus d'aisance
- Logo imprimé SPIRO ultra-réfléchissant sur le bas avant de la jambe gauche

Points d'accès : Une seule épaisseur
Décoration : Transfert, Broderie

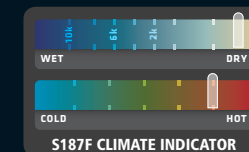
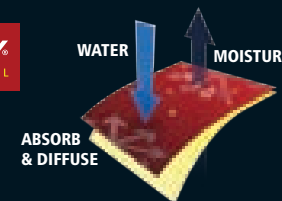


COOL-DRY® Behandlung, 80% Polyamid (Nylon), 20% Elastan, 200g/m²

AUSSTATTUNG

- Sehr weiches, sportliches Gewebe
- Feuchtigkeitsregulierend, hält kühl
- Atmungsaktiv und sehr leicht
- Anatomisch geformt, Seiteneinsätze
- Hoher Taille mit elastischem Bund und Schlüsseltasche mit Patte innen
- Antibakterielles, doppelschichtiges Stoffpolster
- Antirutsch Gummi aus Silikon am Bein
- 4 Wege Stretch für viel Bewegungsfreiheit
- Reflektierendes, gedrucktes SPIRO- Logo auf linkem Bein

Veredelungszugang: n.v.
Veredelungsmöglichkeiten: Transferdruck, Stick



Scan QR Code to view the complete range



S257X

UNISEX BIKEWEAR SHORT GLOVE

FABRIC:

Top- 85% Nylon 15% Elastane

Palm/Strap- 100% Polyester microfibre

Thumb- 100% Polyester

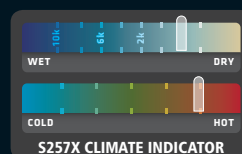
FEATURES

- Fingerless
- SPIRO side tab
- Soft microfibre palm for grip
- Padded palm for comfortable wear
- Central finger loop for ease of removing gloves
- Adjustable tear release wrist strap
- Lightweight 40g
- Unisex
- S, M, L

CASE: 25 PACK: 5

Decorators access: Open

Decoration process: N/A



Dessus de la mitaine- 85% Nylon 15% Élasthanne
Paume/Bande au poignet- 100% Polyester Microfibre
Pouce- 100% Polyester

CARACTÉRISTIQUES

- Sans doigts
- Étiquette Spiro sur le côté
- Paume en Microfibre douce pour une meilleure adhérence
- Paume rembourée pour le confort
- Boucle centrale pour un retrait facile
- Poignets réglables par bande velcro
- Légères 40g
- Coupe Unisex

Points d'accès: Ouvert

Décoration: N/A



Oberhand- 85% Nylon, 15% Elasthan
Innenhand/Armband - 100% Polyester Microfaser
Daumen - 100% Polyester

AUSSTATTUNG

- Kurzfinger
- Seitlicher SPIRO Anhänger
- Innenhand aus weichem Microfaser für optimalen Grip
- Innenhand- Polsterung ist stoß- und vibrationsabsorbieren für tollen Komfort
- Zentrale Fingerschleife, um die Handschuhe leichter auszuziehen
- Verstellbares Armband mit Klettverschluss
- Leichte 40g
- Unisex Schnitt

Veredelungszugang: n.v.

Veredelungsmöglichkeiten: N/A



Soft microfibre palm for grip



Adjustable tear release wrist strap

NEW



Lightweight

GREY/BLACK
(424/BLK)Windproof
Lightweight

STRETCH

MIX & MATCH

CO-ORDINATE YOUR LOOK

1 CO-ORDINATING JACKETS

www.spiroactivewear.com



2 CO-ORDINATING TOPS

www.spiroactivewear.com



3 CO-ORDINATING LEGWEAR

www.spiroactivewear.com



4 S257X COLOUR RANGE

www.spiroactivewear.com



Scan QR Code to view the complete range



S258X

UNISEX BIKEWEAR LONG GLOVE

FABRIC:

Top Glove/Cuff- 100% Polyester

Palm/Patches/Padding- 100% Polyurethane

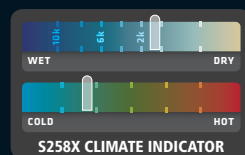
FEATURES

- Non slip Polyurethane palm patches for added grip
- Padded palm patches for comfort grip
- Elasticised cuff
- SPIRO side tab
- Warm and comfortable to wear
- Adjustable tear release wrist strap
- Weight 80g
- Unisex
- S, M, L

CASE: 25 PACK: 5

Decorators access: Open

Decoration process: N/A



Dessus du gant/Poignet- 100% Polyester
Paume/Coussinets/Rembourrage- 100% Polyuréthane

CARACTÉRISTIQUES

- Coussinets antidérapants en polyuréthane au niveau des paumes pour une meilleure adhérence
- Coussinets rembourrés au niveau de la paume pour plus de confort
- Bande velcro aux poignets
- Étiquette Spiro sur le côté
- Paumes rembourrées pour plus de confort
- Poignets réglables par bande velcro
- 80g
- Coupe Unisex

Points d'accès: Ouvert

Décoration: N/A



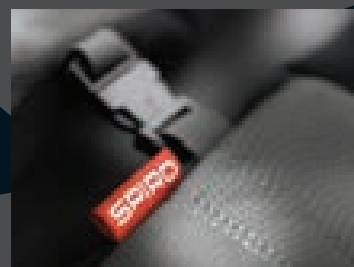
Oberhand- 100% Polyester
Innenhand/ Innenfutter- 100% Polyurethan

AUSSTATTUNG

- Innenhand mit rutschhemmendem Besatz aus Polyurethan für zusätzlichen grip
- Innenhand mit Besatzpolsterung für einen komfortablen grip
- individuelle Anpassung durch Klettverschluss
- Seitlicher SPIRO Anhänger
- Warm und angenehm zum Tragen
- Verstellbares Armband mit Klettverschluss
- 80g
- Unisex Schnitt

Veredelungszugang: n.v.

Veredelungsmöglichkeiten: N/A



SPIRO side tab



Non Slip Polyurethane palm patches for added grip

BLACK/GREY
(BLK/424)

NEW

Windproof
Midweight

MIX & MATCH

CO-ORDINATE YOUR LOOK

1 CO-ORDINATING JACKETS

www.spiroactivewear.com



2 CO-ORDINATING TOPS

www.spiroactivewear.com



3 CO-ORDINATING LEGWEAR

www.spiroactivewear.com



4 S258X COLOUR RANGE

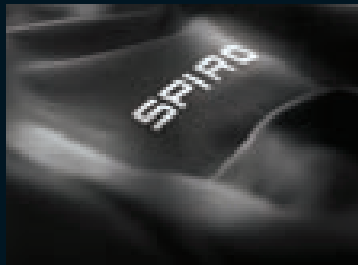
www.spiroactivewear.com



Scan QR Code to view the complete range



SPIRO





JUNIOR

COLLECTION

S250J JUNIOR BODYFIT BASE LAYER SHORTS.....	NEW 114
S253J JUNIOR QUICK DRY T-SHIRT.....	NEW 116
S261J JUNIOR SKORT	NEW 118

Scan QR Code to view the complete range



SPIRO BASE

S250J

JUNIOR BODYFIT BASE LAYER SHORTS

FABRIC:

200g/m² 80% Polyamide 20% Elastane

FEATURES

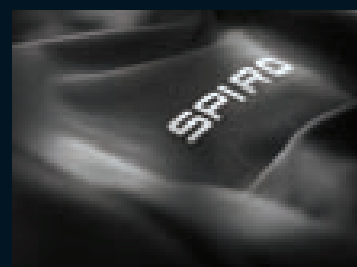
- Elasticised waistband
- Flat lock stitch side seams
- Contour panels
- Reflective SPIRO print logo
- Inner key pocket
- Quick dry treatment performance fabric with fast wicking control keeps skin cool & comfortable
- Micro stretch soft athletic fabric
- Ideal layer garment
- Comfort unisex fit
- Adult size available

Decorators access: Open

Decoration process: Transfer print or embroidery



Inner key pocket



Reflective SPIRO print logo



200g/m² 80/20 Polymide Élasthanne

CARACTÉRISTIQUES

- Ceinture élastiquée
- Coutures plates latérales
- Piècements galbés
- Logo imprimé SPIRO ultra-réfléchissant
- Petite poche intérieure
- Tissu avec traitement de séchage rapide Quick Dry
- Tissu doux conçu pour les performances sportives
- Vêtement idéal en superposition
- Coupe confortable
- Modèle adulte également disponible

Points d'accès: Ouvert

Décoration : Transfert, Broderie



200g/m² 80% Polyamid (Nylon), 20% Elastan

AUSSTATTUNG

- Elastischer Bund
- Flatlocknähte an den Seiten
- Körperbetonende Einsätze
- Reflektierendes, gedrucktes SPIRO- Logo
- Innenliegende Schlüsseltasche
- Schnell trocknend und feuchtigkeitsregulierend, hält kühl
- Extrem dehnfähiges, sportliches Gewebe
- Ideal als Sportbekleidung - kann als Mittelschicht getragen werden
- Auch für Erwachsene erhältlich

Veredelungszugang: n.v.

Veredelungsmöglichkeiten: Transferdruck, Stick

NEW



Lightweight



BLACK
(BLK)

Windproof
Breathable
Fast Wicking
Extremely lightweight

STRETCH

MIX & MATCH

CO-ORDINATE YOUR LOOK

1 CO-ORDINATING TOPS

www.spiroactivewear.com



S253J



S253J



S253J



S253J

2 S250J COLOUR RANGE

www.spiroactivewear.com



BLACK
(BLK)



BLACK
(BLK)

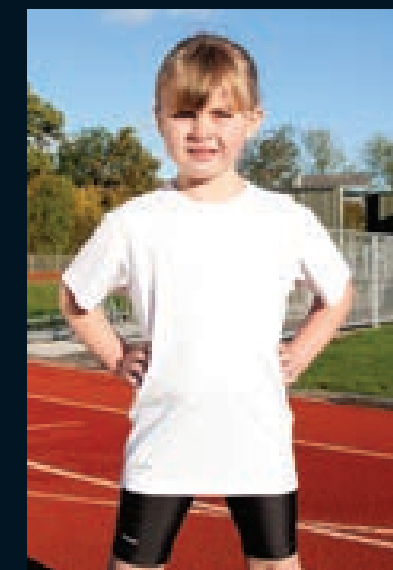
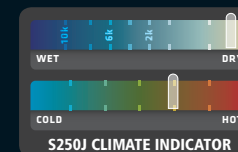


BLACK
(BLK)



BLACK
(BLK)

	S	M	L
AGE	6-7	8-9	10-11
HEIGHT CM	128	140	152
	CASE: 20		PACK: 5



Scan QR Code to view the complete range



S253J

JUNIOR QUICK DRY T-SHIRT

FABRIC:

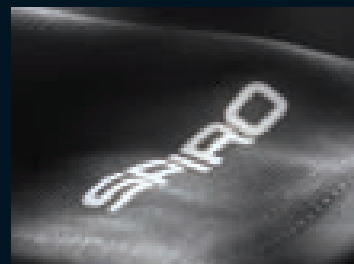
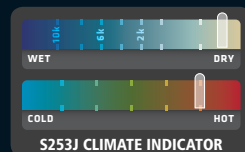
160g/m² 100% Polyester

FEATURES

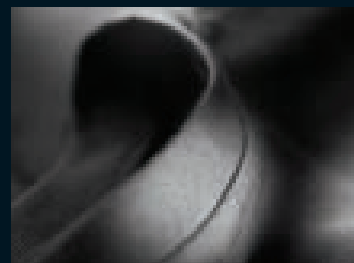
- Flat lock stitch side seams
- Contrast panels
- Breathable
- Reflective SPIRO print logo & inner neck label
- Quick dry performance base layer garment
- Fast wicking control keeps skin cool & comfortable
- Soft athletic fabric
- Comfort fit
- Adult fit also available

Decorators access: Open

Decoration process: Transfer print or embroidery



Reflective SPIRO print logo



Soft athletic fabric

Windproof
Breathable
Quick drying

Lightweight

LIME GREEN
(382)BLACK
(BLK)NAVY
(5395)WHITE
(WHT)

MIX & MATCH

CO-ORDINATE YOUR LOOK

1 S253J COLOUR RANGE

www.spiroactivewear.com

BLACK
(BLK)NAVY
(5395)WHITE
(WHT)LIME GREEN
(382)

2 CO-ORDINATING LEGWEAR

www.spiroactivewear.com



S250J



S250J



S250J



S250J

3 CO-ORDINATING LEGWEAR

www.spiroactivewear.com



S261J



S261J



S261J



S261J

160g/m² 100% Polyester

CARACTÉRISTIQUES

- Coutures plates latérales
- Empiècements galbés
- Logo imprimé SPIRO ultra-réfléchissant et étiquette de cou
- Tissu seconde peau avec traitement de séchage rapide Quick Dry
- Élimination rapide de l'humidité pour assurer fraîcheur et confort de la peau
- Tissu doux conçu pour les performances sportives
- Coupe confortable
- Modèle adulte également disponible

Points d'accès: Ouverte

Décoration: Transfert, Broderie

160g/m² 100% Polyester

AUSSTATTUNG

- Flatlocknähte an den Seiten
- Einsätze mit Kontrastnaht
- Gedrucktes reflektierendes SPIRO-Logo am Bund und im Nackenbereich
- Schnell-trocknend, Funktions-Base Layer
- Feuchtigkeitsregulierend- hält kühl
- Sehr weiches, sportliches Gewebe
- Angenehmer Tragekomfort
- Auch für Erwachsene erhältlich

Veredelungszugang: n.v.

Veredelungsmöglichkeiten: Transferdruck, Stick

	S	M	L	XL
AGE	5-6	7-8	9-10	11-12
HEIGHT CM	116	128	132	140
CASE: 25				PACK: 5

Scan QR Code to view the complete range



SPIRO**S261J**

JUNIOR SKORT

FABRIC:210g/m² 100% Polyester skirt, 95% Cotton 5% Elastane pant**FEATURES**

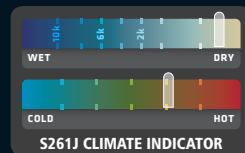
- Integral sport pant
- Flat elastic waistband
- Hem vent
- Waffle weave fabric
- Fast wicking control keeps skin cool & comfortable
- Soft athletic fabric
- Adult fit also available

Decorators access: Open**Decoration process:** Transfer print or embroidery

Reflective SPIRO print logo



Waffle weave fabric



S261J CLIMATE INDICATOR

Jupe en Polyester Élasthanne gaufré 210g/m² Short en Coton Élasthanne**CARACTÉRISTIQUES**

- Short moulant intégral
- Ceinture plate élastiquée
- Seintures latérales
- Élimination rapide de l'humidité pour assurer fraîcheur et confort de la peau
- Tissu doux conçu pour les performances sportives
- Disponible en taille Adulte

Points d'accès : Ouvert**Décoration :** Transfert, broderie210g/m² Außen: Waffel- Polyester Elastan, Innen: Baumwolle- Elastan**AUSSTATTUNG**

- integrierte Sport Pant
- Flacher, elastischer Taillenbund
- Seitenschlitze
- Feuchtigkeitsregulierend- hält kühl
- Sehr weiches, sportliches Gewebe
- Auch für Damen erhältlich

Veredelungszugang: n.v**Veredelungszugang:** Transferdruck, StickNAVY
(5395)BLACK
(BLK)

Lightweight

Windproof
Quick drying
Lightweight
Breathable

	S	M	L	XL
AGE	5-6	7-8	9-10	11-12
WAIST CM	22	24	26	28
CASE:	25		PACK: 5	

MIX & MATCH

CO-ORDINATE YOUR LOOK

1 CO-ORDINATING TOPSwww.spiroactivewear.com

S253J



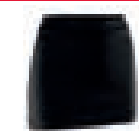
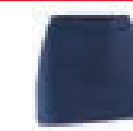
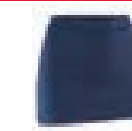
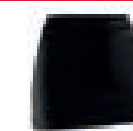
S253J



S253J



S253J

2 S261J COLOUR RANGEwww.spiroactivewear.comBLACK
(BLK)NAVY
(5395)NAVY
(5395)BLACK
(BLK)**STRETCH**

Integral sport pant

Scan QR Code to view the complete range



CARING FOR YOUR SPIRO GARMENT

Washing. Always look for the garment care label and follow washing instructions. SPIRO garments are manufactured to ensure that when washed at the right temperature using a non-biological detergent & without fabric softener, your SPIRO garment will stay looking its best time after time. The wash symbol tells you the washing process & temperature to be followed:

 30° Washing Symbol - Gentle Cycle


- Before washing, close all zips, undo buttons and flatten out collars and cuffs. Removing loose or sharp objects from pockets & lining.
- Turn garments inside out to reduce abrasion & fibre contamination from other garments during the washing cycle.
- Garments of similar colour can be machine washed together where stated on the care label.
- Do not overload the washing machine.
- Use the correct amount of detergent relative to how dirty the garments are.
- Check garments regularly for marks or stains and remove as soon as possible.


Drying. Always check the care label to see how a garment is to be dried:

 Flat Dry only

 Do not Tumble Dry


 Dry Clean

 Drip Dry only

 Do not Bleach

 Do not Dry Clean

Ironing. The iron symbols advise the optimum temperature at which to iron. The dots represent the recommended temperature; the more dots the hotter the iron.

 Iron Symbol with one dot - 120°/248F (Cool)

 Do not Iron / Steam Treatment is not allowed

- Do not iron directly onto a printed garment. Turn inside out & iron the reverse side. Do not tumble dry any printed garment.
- When ironing dark garments avoid "iron shine" with a dry iron by ironing on the reverse side or through a damp cloth. This is not applicable if using a steam iron.

DECORATION

SPIRO garments are designed to take the decoration recommended against each garment. These types have been tried independently and the recommendation given can be taken as an indication of how the garment may perform. Accuracy or completeness is not guaranteed so before use, the decorator must determine the suitability of each product for the decoration.

Printers in particular employ different techniques and use a variety of products so SPIRO does not take responsibility for third party decoration and always recommends testing before bulk decoration. When garments can be directly screen printed onto any colour other than white, extreme caution must be observed. Due to the engineering of man-made materials, there is a high risk of colour migration through the ink film. This may however be managed by experienced printers with the correct ink choices.

When suggesting digital transfers, customers are encouraged to seek advice from their digital media supplier, whether be it for full colour imagery or simple vinyl CAD cut transfers. There are many application temperatures and techniques available and SPIRO is happy to supply recommended digital or direct print supplier details for guidance.